

LEAF FILTRATION DEVICE



Approval Date

Wade Division / Tyler Pipe Assumes No Responsibility For Superseded or Voided Data

Customer Approval

Job Location

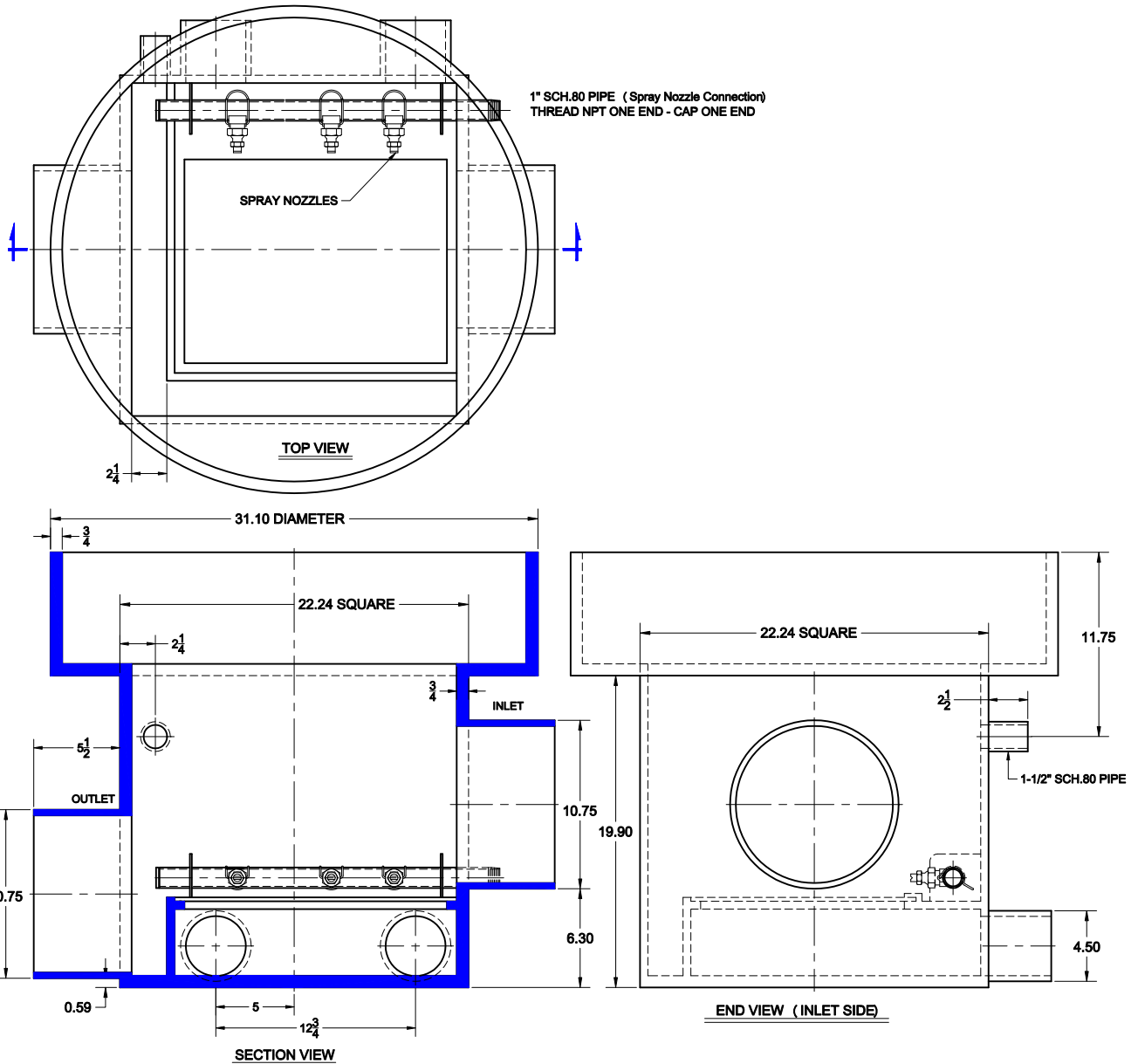
Dimensional Data (Inches/mm) are Subject to Manufacturers Tolerance and Change Without Notice.

Job Name

TRIDENT WT-790 (790 GPM)

HDPE INLINE LEAF FILTRATION DEVICE WITH SPIGOT INLET/OUTLET, 304 STAINLESS STEEL FILTER MAT, QUICK SET ADJUSTABLE POLYPROPYLENE FAN SPRAY NOZZLES, 1" IPS THREADED NOZZLE WATER SUPPLY CONNECTION & 4" TANK CONNECTIONS.

THE WADE TRIDENT INDUSTRIAL INLINE FILTRATION DEVICE IS USED IN LARGE RAINWATER HARVESTING SYSTEMS. THE FILTER CAN BE PLACED ON TOP OF A TANK OR WITHIN A MANHOLE. IS IS RECOMMENDED THAT THE FILTER GRID BE LOCATED BELOW THE MAXIMUM WATER LEVEL OF THE TANK TO IMPROVE THE SELF CLEANING EFFECT. THE FAN SPRAY WATER IS CONNECTED TO THE HARVESTED RAINWATER SYSTEM. PUMP IS PROVIDED BY OTHERS.



OPTIONS

Suffix	Description
<input type="checkbox"/> XTLD	EXTENSION WITH L.D. COVER
<input type="checkbox"/> XTHD	EXTENSION W/ H.D. COVER
<input type="checkbox"/> TC	CALMING INLET FOR TANK

OPTIONS

Suffix	Description
<input type="checkbox"/> LD	LIGHT DUTY COVER
<input type="checkbox"/> HD	HEAVY DUTY COVER
<input type="checkbox"/> XH	EXTRA HEAVY DUTY COVER

SPECIFY HEIGHT FOR EXTENSIONS (EXTENSIONS ARE FABRICATED STEEL - PAINTED)

AutoCad.dwg

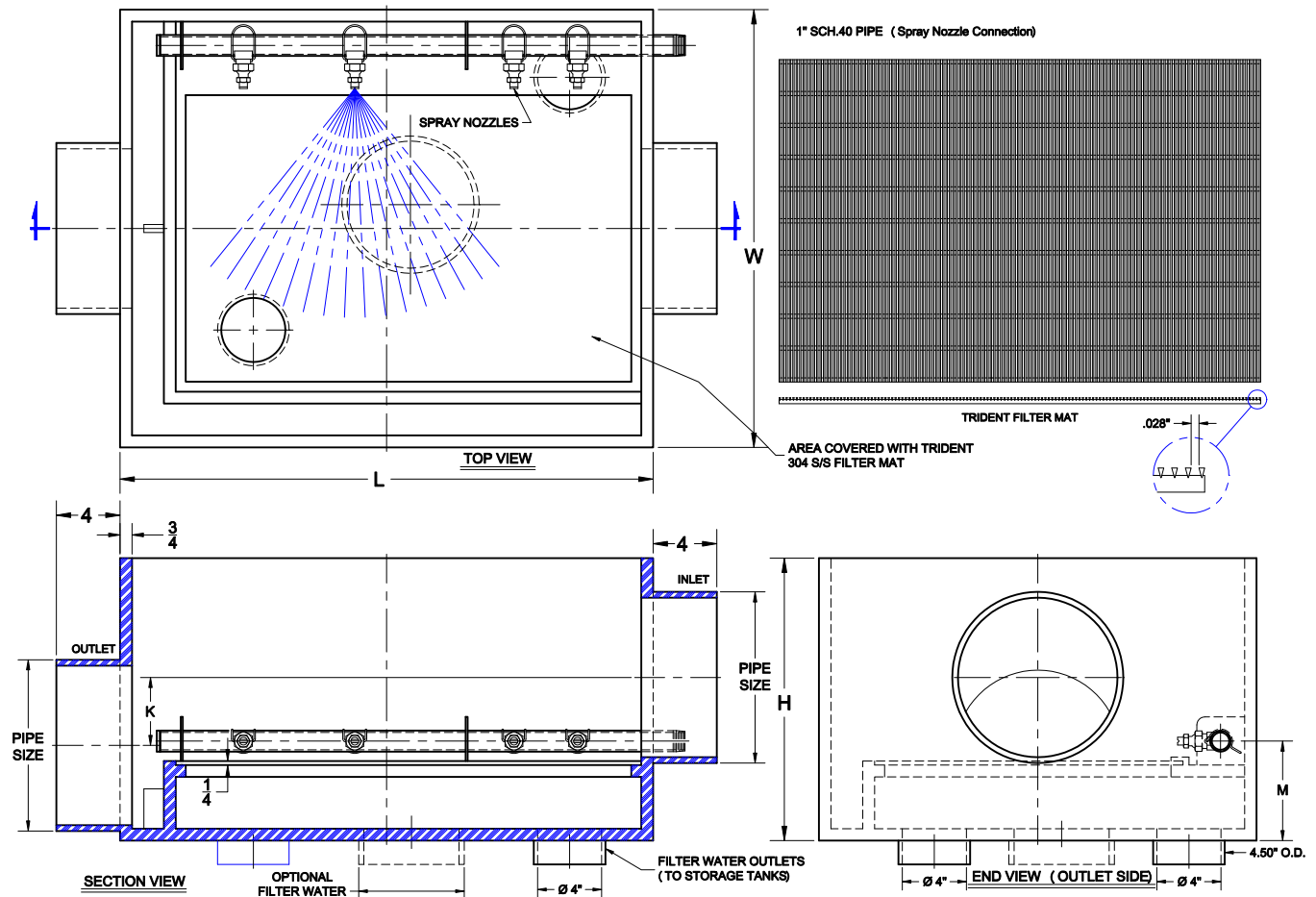
LEAF FILTRATION DEVICE



TRIDENT

HDPE INLINE LEAF FILTRATION DEVICE WITH SPIGOT INLET/OUTLET, 304 STAINLESS STEEL FILTER MAT, QUICK SET ADJUSTABLE POLYPROPYLENE FAN SPRAY NOZZLES, 1" IPS THREADED NOZZLE WATER SUPPLY CONNECTION & 4" TANK CONNECTIONS.

THE WADE TRIDENT INDUSTRIAL INLINE FILTRATION DEVICE IS USED IN LARGE RAINWATER HARVESTING SYSTEMS. THE FILTER CAN BE PLACED ON TOP OF A TANK OR WITHIN A MANHOLE. IS IS RECOMMENDED THAT THE FILTER GRID BE LOCATED BELOW THE MAXIMUM WATER LEVEL OF THE TANK TO IMPROVE THE SELF CLEANING EFFECT. THE FAN SPRAY WATER IS CONNECTED TO THE HARVESTED RAINWATER SYSTEM. PUMP IS PROVIDED BY OTHERS.



CATALOG NUMBER	Flow Rate (GPM)	Inlet/Outlet Pipe Size Nominal (Actual)	'L' Length	'W' Width	'H' Height	'K' Difference Between Inlet / Outlet	'M' (Spray Nozzles)	Spray Nozzles (Qty @ GPM Per Nozzle)	Filter Water Outlets To Storage Tanks Multiple 4" Outlets (Quantity)	Optional Sgl. Outlet Nominal (Actual)	Weight (Lbs)
WT-950	950	10" (10.75)	34.63"	28.75"	18.31"	4.00"	6.00"	4 ea @ 3.76 gpm	2 Each	8" (8.625)	66.1
WT-1420	1420	12" (12.75)	44.50"	28.75"	19.75"	4.00"	6.00"	5 ea @ 3.65 gpm	2 Each	10" (10.75)	77.2
WT-2850	2850	16" (16.00)	65.00"	28.75"	25.63"	4.00"	6.00"	7 ea @ 3.66 gpm	4 Each	12" (12.75)	110.2
WT-4750	4750	20" (20.00)	84.63"	28.75"	29.50"	4.00"	6.00"	9 ea @ 3.67 gpm	6 Each	16" (16.00)	198.4

SPRAY NOZZLE PRESSURE REQUIREMENTS: 22-40 PSI

OPTIONS

Suffix	Description
<input type="checkbox"/> XTLD	EXTENSION WITH L.D. COVER
<input type="checkbox"/> XTHD	EXTENSION W/ H.D. COVER
<input type="checkbox"/> TC	CALMING INLET FOR TANK

OPTIONS

Suffix	Description
<input type="checkbox"/> LD	LIGHT DUTY COVER
<input type="checkbox"/> HD	HEAVY DUTY COVER
<input type="checkbox"/> XH	EXTRA HEAVY DUTY COVER

SPECIFY HEIGHT FOR EXTENSIONS (EXTENSIONS ARE FABRICATED STEEL - PAINTED)

AutoCad.dwg

Approval Date: _____
Customer Approval: _____
Job Location: _____
Job Name: _____
Dimensional Data (Inches/mm) are Subject to Manufacturers Tolerance and Change Without Notice.
Wade Division / Tyler Pipe Assumes No Responsibility For Superseded or Voided Data