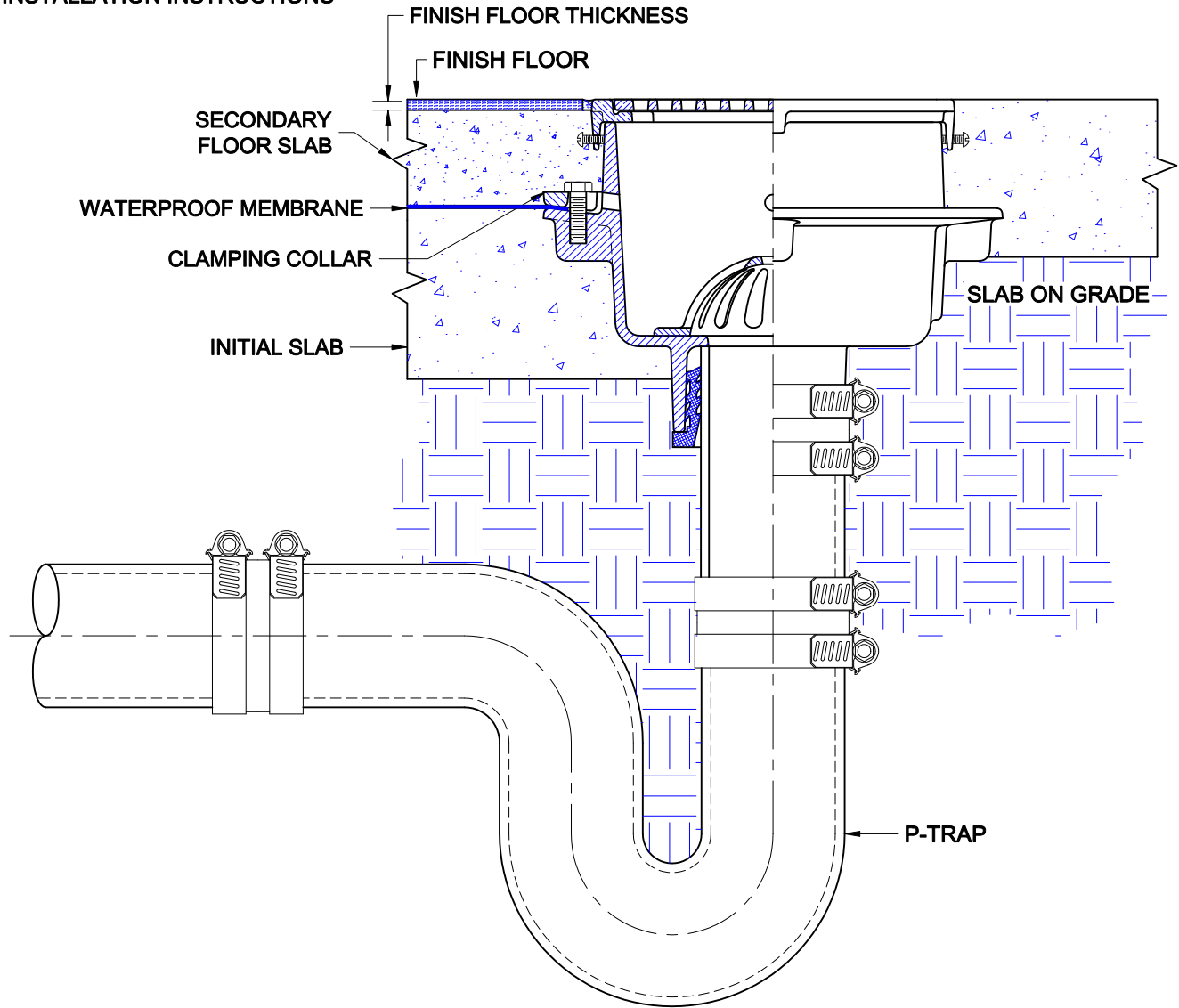


SQUARE FLOOR SINK



9110 SERIES

CAST IRON FLOOR SINK WITH PORECLAIN INTERIOR, FLANGE, SATIN FINISH NICKEL BRONZE TOP, SECURED GRATE AND BOTTOM OUTLET.
INSTALLATION INSTRUCTIONS



The Wade 9110 is suitable for various floor construction methods - it is ideally suited for smooth finished stained concrete floors or for ceramic tile applications. The drain piping is first run to an elevation below the expected finish floor level. The piping must include a p-trap and the drain body is secured to the pipe with any of three connections; No-Hub, Inside Caulk, or Push-On Ty-Seal. The type of connection must be specified upon ordering any Wade Drain. If the Ty-Seal connection is specified, apply Tyler Ty-Seal lubricant to the inside surfaces of the gasket and then firmly push the drain body onto the pipe until it contacts the pipe stop in the body. No-Hub outlets should be installed with Tyler or Anaco/Husky couplings and secured with a torque wrench to the manufacturers recommendations. Inside Caulk connections should follow standard industry practices. Once the body is connected to the pipe, the initial concrete sub-floor is poured to an elevation level with the top flange of the drain body. The waterproofing membrane is applied to the the sub-floor surface up to and around the perimeter of the flange. The optional clamp device is then placed onto the drain and secured - the membrane must be clamped between the body and the clamp device. The top of the drain should be at the finish floor level or slightly below. If a finish floor is to be applied, the top of the drain should extend above the structural slab to a dimension of the thickness of the floor material. For slab-on-grade applications, the body is simply connected to the piping and concrete is poured to the top surface.

Care must be taken to protect the top during installation. Use either cardboard, tape or other materials to protect the top during construction.

AutoCad.dwg

Approval Date _____
 Customer Approval _____
 Job Location _____
 Job Name _____
 Dimensional Data (Inches/mm) are Subject to Manufacturers Tolerance and Change Without Notice. Wade Division / Tyler Pipe Assumes No Responsibility For Superseded or Voided Data