

ADJUSTABLE FLOOR CLEANOUT



Approval Date

Customer Approval

Job Location

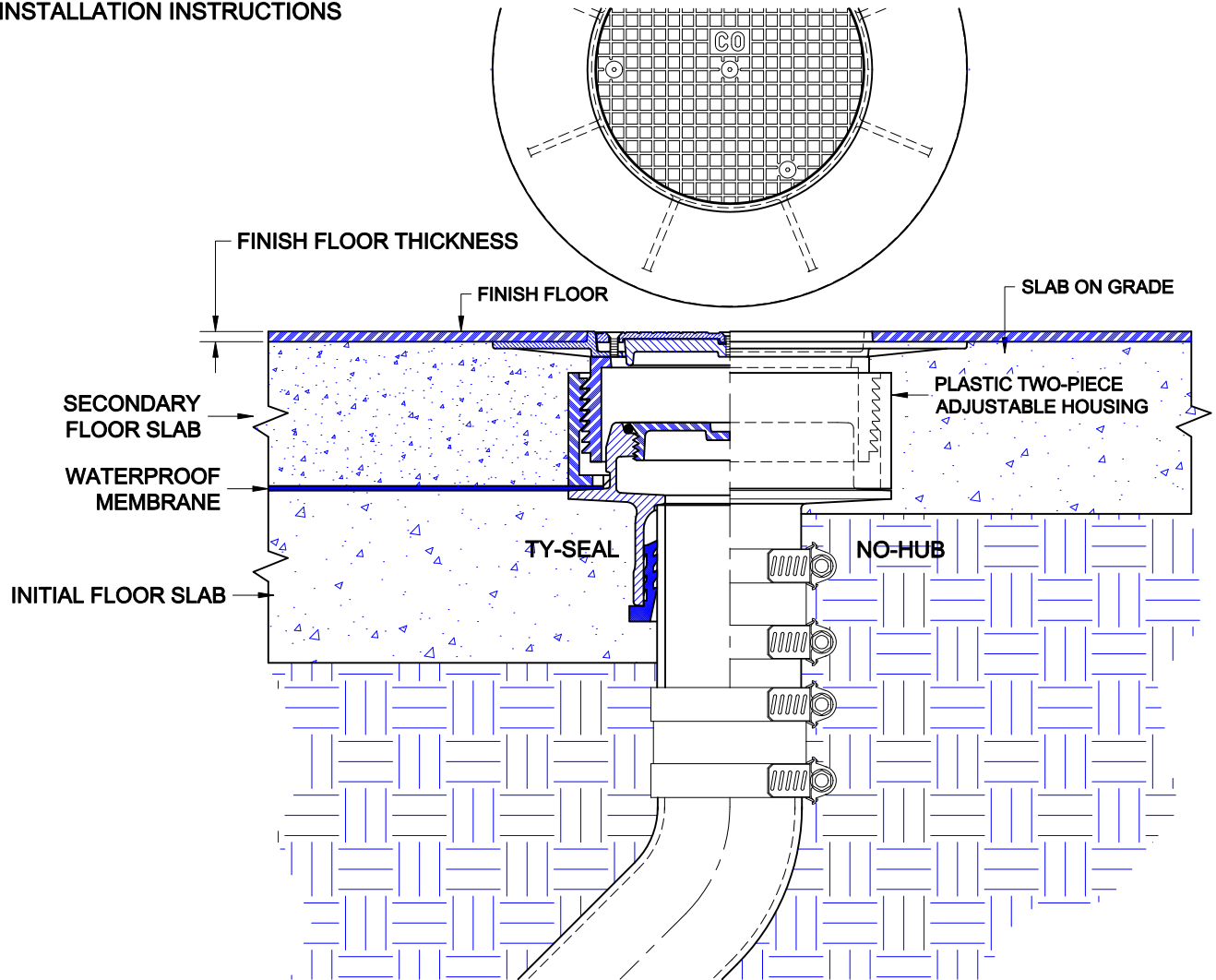
Job Name

Wade Division / Tyler Pipe Assumes No Responsibility For Superseded or Voided Data

Dimensional Data (Inches/mm) are Subject to Manufacturers Tolerance and Change Without Notice.

6000-D

CAST IRON ADJUSTABLE FLOOR CLEANOUT WITH SATIN FINISH NICKEL BRONZE TOP ASSEMBLY, WIDE TROWELING FLANGE, VANDAL PROOF SECURED COVER, PLASTIC HOUSINGS AND BOTTOM OUTLET. INSTALLATION INSTRUCTIONS



The Wade 6000-D adjustable floor cleanout is for applications utilizing poured water proof floor coverings such as Dex-O-Tex. The drain piping is first run to an elevation below the expected finish floor level. The body (ferrule) is secured to the pipe with with any of three connections; No-Hub, Inside Caulk, or Push-On Ty-Seal. The type of connection must be specified upon ordering most Wade cleanouts. If the Ty-Seal connection is specified, apply Tyler Ty-Seal lubricant to the inside surfaces of the gasket and then firmly push the drain body onto the pipe until it contacts the pipe stop in the body. No-Hub outlets should be installed with Tyler or Anaco/Husky couplings and secured with a torque wrench to the manufacturers recommendations. Inside Caulk connections should follow standard industry practices.

Once the ferrule is connected to the pipe, the initial concrete sub-floor is poured to an elevation level with the flange of the cleanout ferrule. The waterproofing membrane is applied to the the sub-floor surface over the flange and to the perimeter of the body. To install the top assembly, align the three tabs on the lower plastic housing with the beveled areas on the top of the ferrule and firmly push down until the housing contacts the membrane. The adjustable top assembly threads up or down to adjust to the desired dimension. The second pour should be flush with the top surface of the wide flange on the top assembly. For finish floor installation, the waterproof material is applied to the slab and extends over the wide flange of the top, butting up to the raised lip. Care must be taken to protect the top during installation. Use either cardboard, tape or other protective materials.

For slab on grade construction, the ferrule and top are assembled and installed on the pipe. Concrete is poured up to the wide flange on the top assembly. The finish floor is then applied.