

ADJUSTABLE FLOOR CLEANOUT



Approval Date

Customer Approval

Job Location

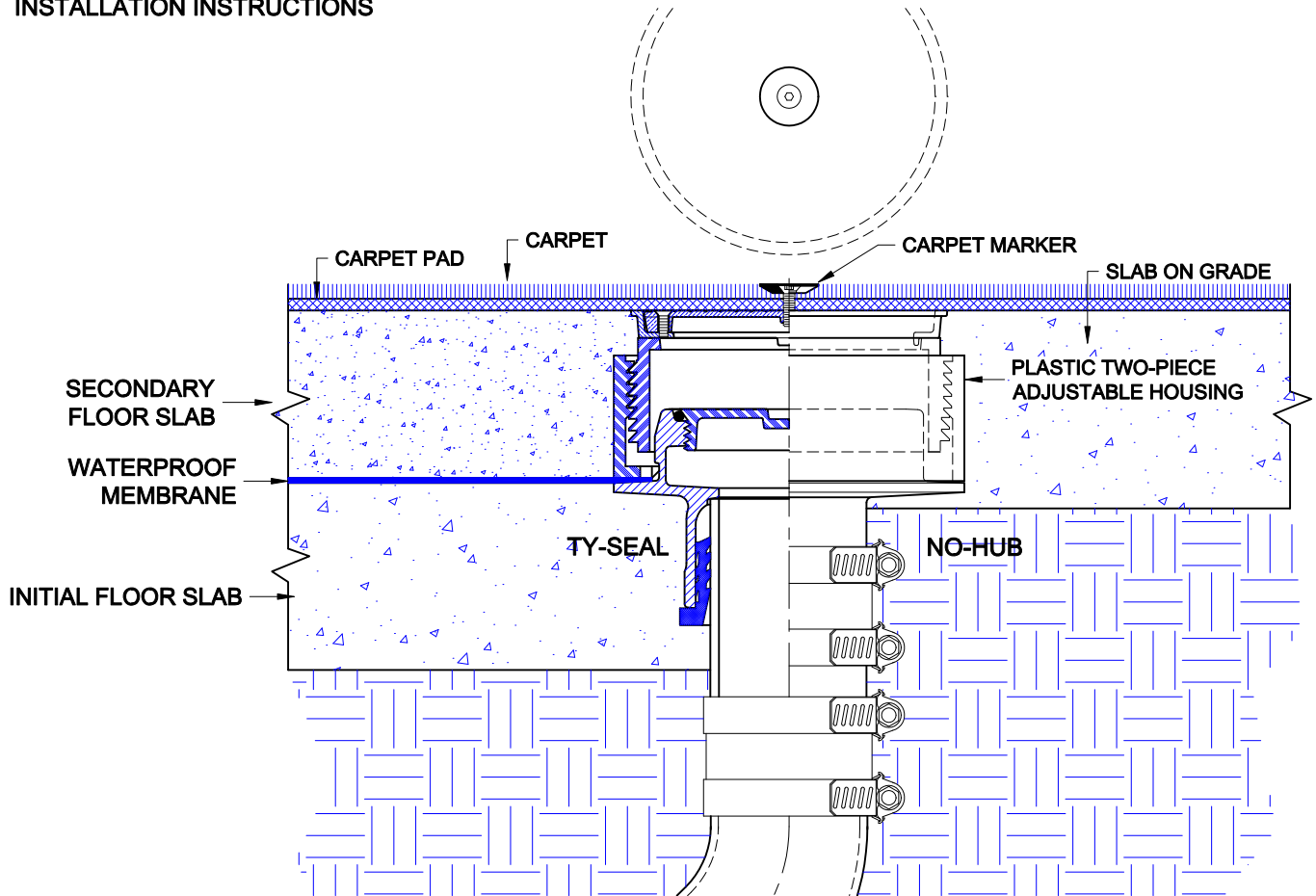
Job Name

Wade Division / Tyler Pipe Assumes No Responsibility For Superseded or Voided Data

Dimensional Data (Inches/mm) are Subject to Manufacturers Tolerance and Change Without Notice.

6000-CM

CAST IRON ADJUSTABLE FLOOR CLEANOUT WITH SATIN FINISH NICKEL BRONZE TOP ASSEMBLY, PLASTIC HOUSINGS, VANDAL PROOF SECURED COVER, CARPET MARKER AND BOTTOM OUTLET.
INSTALLATION INSTRUCTIONS



The Wade 6000-CM adjustable floor cleanout is used for carpet areas. The drain piping is first run to an elevation below the expected finish floor level. The body (ferrule) is secured to the pipe with with any of three connections; No-Hub, Inside Caulk, or Push-On Ty-Seal. The type of connection must be specified upon ordering most Wade cleanouts. If the Ty-Seal connection is specified, apply Tyler Ty-Seal lubricant to the inside surfaces of the gasket and then firmly push the cleanout ferrule onto the pipe until it contacts the pipe stop in the body. No-Hub outlets should be installed with Tyler or Anaco/Husky couplings and secured with a torque wrench to the manufacturers recommendations. Inside Caulk connections should follow standard industry practices.

Once the ferrule is connected to the pipe, the initial concrete sub-floor is poured to an elevation level with the flange of the ferrule. The waterproofing membrane is applied to the the sub-floor surface, covering the ferrule flange and up to the perimeter of the body. The top assembly is aligned over the ferrule - make sure the plastic tabs match the beveled areas on the ferrule. Firmly push the top down until it contacts the membrane at the ferrule flange. The adjustable top assembly threads up or down to the desired dimension. The second concrete pour should be to the top level of the cleanout top or slightly below.

For slab on grade construction, install top assembly onto ferrule, adjust to the desired dimension and pour concrete up to and around the perimeter of the top.

Before carpet installation, remove the carpet marker and store for later use. The screw that secures the carpet marker is installed into the center hole of the cover to aid in location. Carpet is installed over the concrete completely covering the cleanout top. After carpet installation, locate the screw heads and use a utility knife to slit the carpet and remove the screw. Re-install the carpet marker. Take care to protect the top during installation. A plastic cover is provided and should remain in place until after the concrete pour is complete. If the plastic protector is lost, use either cardboard, tape or other protective materials.

AutoCad.dwg