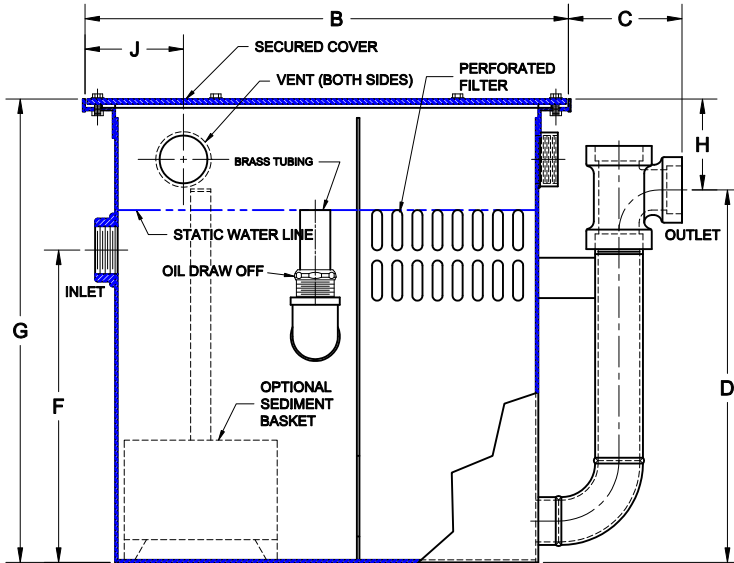


OIL INTERCEPTOR



5500 SERIES

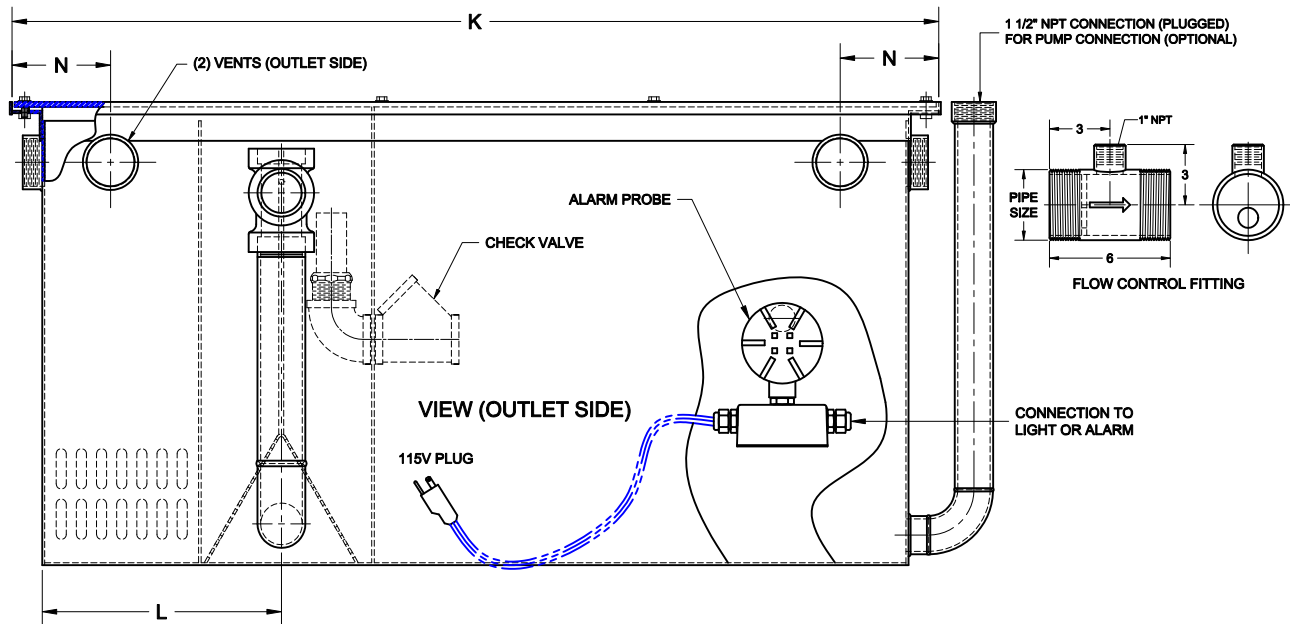
FABRICATED STEEL OIL INTERCEPTOR WITH THREADED INLET/OUTLET, DOUBLE WALL TRAP, REMOVABLE FILTER SCREEN, HEAVY DUTY NON-SKID GASKETED COVER & INTEGRAL STORAGE TANK.



- FEATURES:**
- INTEGRAL STORAGE TANK
 - INTERNAL FUME VENTS
 - DOUBLE WALL TRAP
 - ADJUSTABLE OIL DRAW OFF
 - REMOVABLE FILTER SCREEN
 - STAINLESS STEEL BOLTS
 - ACID RESISTANT COATING INSIDE
 - BITUMINOUS COATING OUTSIDE
 - NON SKID DIAMOND PLATE COVER

- OPTIONS:**
- ANCHOR FLANGE *
 - H-20 LOAD RATED COVER
 - INTEGRAL EXTENSION (H-DIMENSION)
 - OIL TANK SENSOR PROBE / ALARM
 - OIL TANK PUMP OUT CONNECTION
 - INLET SIDE SEDIMENT BASKET

* Anchor Flange Requires Minimum 12" Integral Extension (H=12")

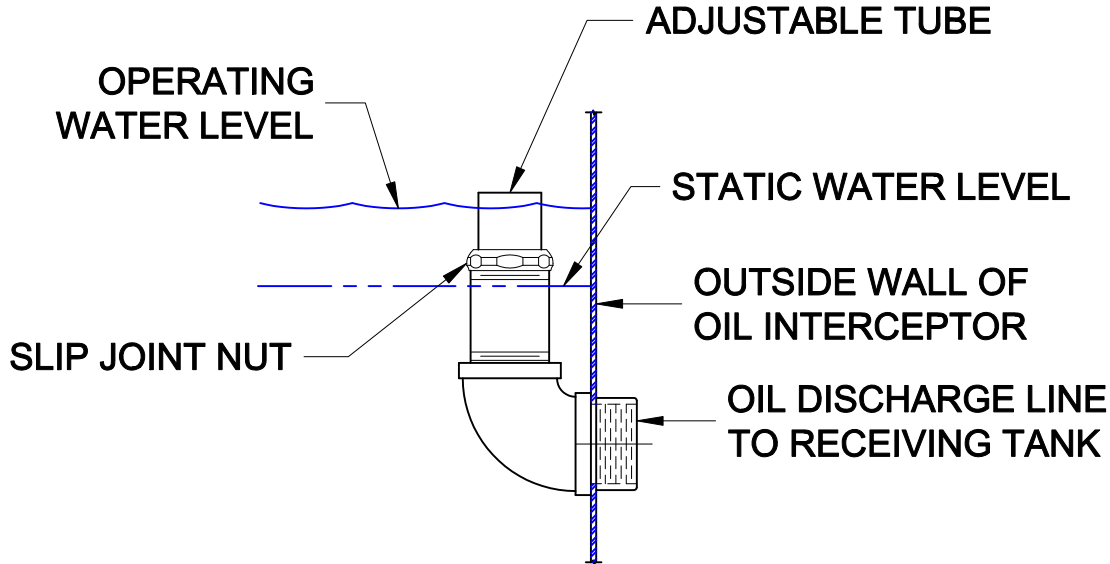


MODEL	PIPE SIZE	VENT SIZE	FLOW RATE (GPM)	HOLDING CAPACITY (GAL)	HOLDING CAPACITY (CU.FT.)	B	C	D	E	F	G	H	J	K	L	N
5500-25	2	3	25	45	6	24	5	25 1/2	29	22 1/2	30	4 1/2	5	46	11 7/8	5
5500-35	3	3	35	64	8.5	33	7	26	37 7/8	22 1/2	31	5	9	44 1/2	13 3/8	5
5500-50	3	3	50	75	10	36	7	26	43 3/8	22 1/2	32	6	6	65 1/2	16 3/8	8
5500-75	4	4	75	150	20	40	9	26 1/2	49 7/8	22 1/2	36	9 1/2	8	65	20 1/4	8
5500-100	4	4	100	172	23	49 1/2	8 1/2	26 1/2	58	22 1/4	36	9 1/2	6	90	26 3/4	8
5500-150	4	4	150	210	28	57	9	30	66	25 3/4	44	14	8	68	25 1/4	8
5500-200	4	4	200	285	38	64 1/4	9	30 1/2	73 1/4	26	48	17 1/2	10	90	29	10
5500-250	4	4	250	397	53	64 1/4	9	35 1/2	73 1/4	31	51	15 1/2	12	90	33	10
5500-300	6	4	300	487	65	70 1/4	18 3/8	36 1/2	94 7/8	30	52	15 1/2	6	86	33	6
5500-350	6	4	350	525	70	76 1/4	18 3/8	43 1/2	100 7/8	37	60	16 1/2	6	94	32 3/8	6
5500-400	6	4	400	598	78.5	83	18 3/8	43	107 7/8	36 3/4	60	17	12	91	32	10
5500-450	6	4	450	630	84	94 1/4	18 3/8	43	118 7/8	36 3/4	60	17	12	83	32	10
5500-500	6	4	500	735	98	94 1/4	18 3/8	46	118 7/8	36 3/4	66	20	12	83	32	10

H = DIMENSION FROM OUTLET TO TOP (SPECIFY) _____

5400-5500

TYPICAL INSTALLATIONS, OPERATION & MAINTENANCE



OIL DRAW-OFF

DRAW-OFF DEVICE IS ADJUSTABLE TO THE GRAVITY HEIGHT OF OIL AND GALLON-PER-MINUTE FLOW. IT CONNECTS INTO THE DISCHARGE PIPE FOR COLLECTION IN AN EXTERNAL TANK.

AFTER INTERCEPTOR IS INSTALLED, ESTABLISH OPERATING WATER LEVEL BY RUNNING WATER THROUGH THE UNIT AT MAXIMUM FLOW RATED EXPECTED. ADJUST THE VERTICAL DRAW-OFF PIPE 1/8" - 1/4" ABOVE WATER LINE.

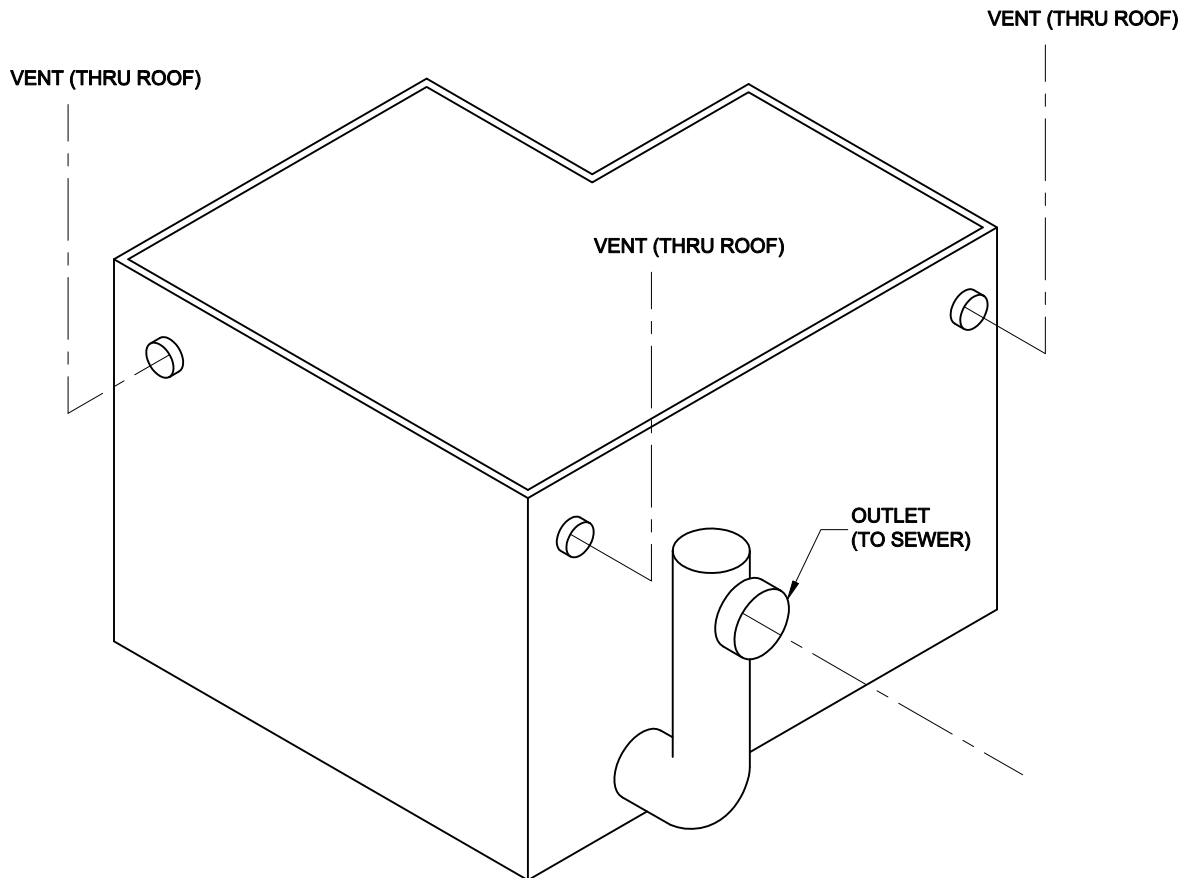
PERIODIC CHECKING OF THIS LEVEL WILL ASSURE PROPER FUNCTIONING OF THE OIL DRAW-OFF. IF DRAWN OFF OIL CONTAINS WATER, ADJUST VERTICAL PIPE UNTIL ONLY OIL FLOWS FROM THE INTERCEPTOR.

OIL INTERCEPTOR



5400-5500

TYPICAL INSTALLATIONS, OPERATION & MAINTENANCE



OIL INTERCEPTOR W/ INTEGRAL STORAGE TANK

INSTALLATIONS:

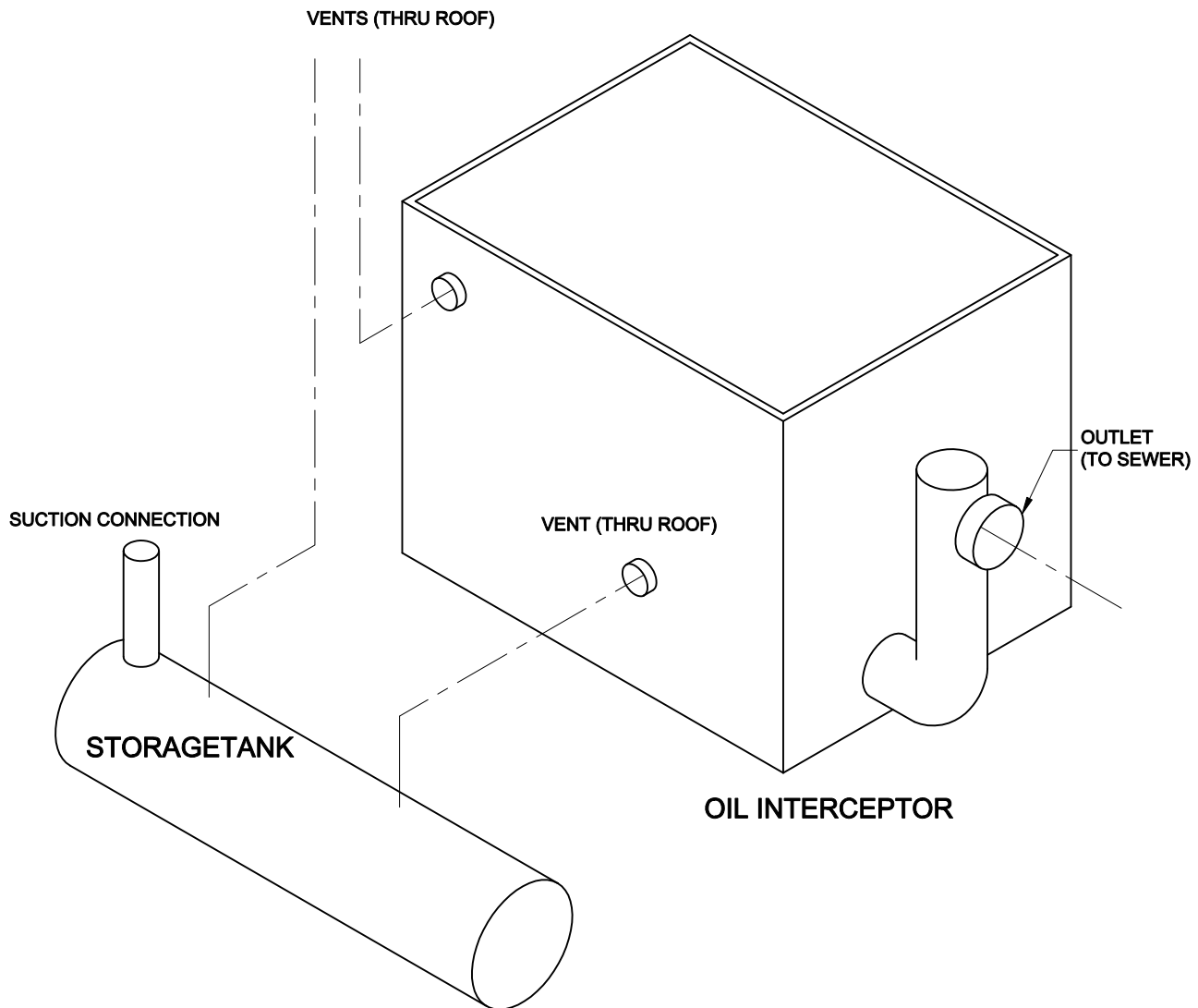
1. CHECK LOCAL CODE REQUIREMENTS BEFORE BEGINNING INSTALLATION.
2. VERIFY THAT NO OBSTRUCTIONS WILL BE PLACED OVER THE INTERCEPTOR AFTER INSTALLATION. A MINIMUM CLEARANCE EQUAL TO THE OVERALL HEIGHT OF THE INTERCEPTOR IS RECOMMENDED.
3. POSITION INTERCEPTOR SO THAT IT IS LEVEL AND CONNECT PIPING TO THE INLET AND OUTLET.
4. CONNECT PIPING TO THE INTERCEPTOR VENTS. VENTS TO ATMOSPHERE WITH EACH TERMINATING 12 INCHES ABOVE THE OTHER IS DESIRED.
5. THE INTERCEPTOR IS EQUIPPED WITH AN ADJUSTABLE SKIMMER TUBE AND SHOULD BE ADJUSTED AS SHOWN ON SHEET 2.

OIL INTERCEPTOR



5400-5500

TYPICAL INSTALLATIONS, OPERATION & MAINTENANCE



INSTALLATIONS:

1. CHECK LOCAL CODE REQUIREMENTS BEFORE BEGINNING INSTALLATION.
2. VERIFY THAT NO OBSTRUCTIONS WILL BE PLACED OVER THE INTERCEPTOR AFTER INSTALLATION. A MINIMUM CLEARANCE EQUAL TO THE OVERALL HEIGHT OF THE INTERCEPTOR IS RECOMMENDED.
3. POSITION INTERCEPTOR SO THAT IT IS LEVEL AND CONNECT PIPING TO THE INLET AND OUTLET.
4. CONNECT PIPING TO THE INTERCEPTOR VENTS. VENTS TO ATMOSPHERE WITH EACH TERMINATING 12 INCHES ABOVE THE OTHER IS DESIRED.
5. THE INTERCEPTOR IS EQUIPPED WITH AN ADJUSTABLE SKIMMER TUBE AND SHOULD BE ADJUSTED AS SHOWN ON SHEET 2.