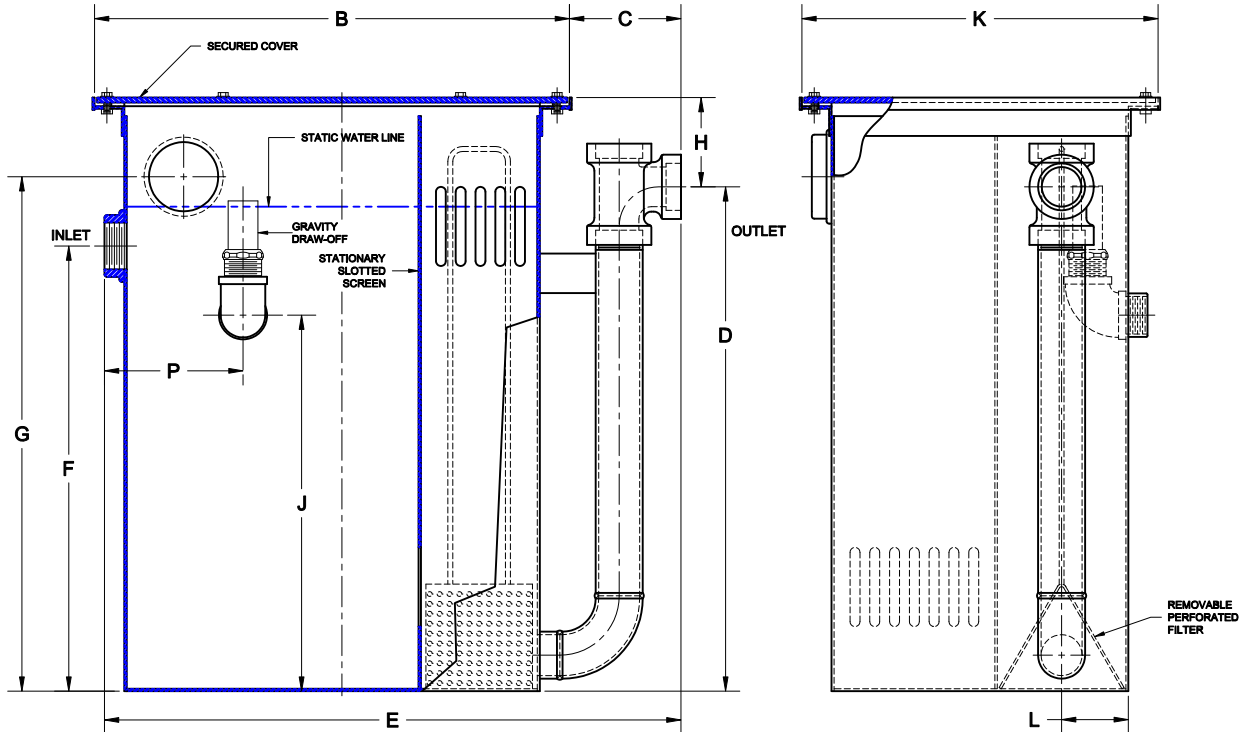


OIL INTERCEPTOR



5400

FABRICATED STEEL OIL INTERCEPTOR WITH THREADED INLET/OUTLET, DOUBLE WALL TRAP, REMOVABLE FILTER SCREEN, HEAVY DUTY NON-SKID GASKETED COVER & INTERNAL Baffle.



MODEL	PIPE SIZE	VENT SIZE	DRAW OFF SIZE	FLOW RATE (GPM)	HOLDING CAPACITY (CU.FT.)	HOLDING CAPACITY (GAL)	H (MIN)	B	C	D	E	F	G	J	K	L	P	QTY OF COVERS	WT (LB)
5400-025	2	3	1 1/2	25	6	45	4 1/2	24	9	25 1/2	33	22 1/2	26	19	18	3 3/8	7	1	306
5400-035	3	3	1 1/2	35	8.5	64	5	30	11 7/8	26	41 7/8	22 1/2	27	19	20	3 3/8	9	1	399
5400-050	4	4	1 1/2	50	10	75	6	36	11 7/8	26	47 7/8	22 1/2	28	19	25	5 1/8	9	1	530
5400-075	4	4	2	75	20	150	9 1/2	40	13 3/8	26 1/4	53 3/8	22 1/4	30	18 1/2	30	6 3/4	16	1	710
5400-100	4	4	2	100	23	172	9 1/2	49 1/2	13 3/8	26 1/4	62 7/8	22 1/4	30	17 3/4	36	6 1/2	24	2	944
5400-150	4	4	2	150	28	210	14	57	13 3/8	30	70 3/8	22 3/4	35	22	36	8	14	2	1,235
5400-200	4	4	2	200	38	285	17 1/2	64 1/4	13 3/8	30 1/2	77 5/8	26	38	22 1/4	40	8 1/4	32	3	1,524
5400-250	4	4	3	250	53	397	15 1/2	64 1/4	13 3/8	35 1/2	77 5/8	31	42	24	45	9 1/4	32	3	1,654
5400-300	6*	4	3	300	65	487	15 1/2	70 1/4	18 3/8	36 1/2	88 5/8	30	43	24	45	9 1/4	38	3	1,887
5400-350	6*	4	3	350	70	525	16 1/2	76 1/2	18 3/8	43 1/2	94 5/8	37	48	31	45	10 1/8	44	3	2,094
5400-400	6*	4	3	400	78.5	598	17	83	18 3/8	43	101 3/8	36 3/4	49	31	45	10 1/4	38	3	2,261
5400-450	6*	4	3	450	84	630	17	94 1/4	18 3/8	43	112 5/8	36 3/4	49	31	45	10 1/4	38	3	2,350
5400-500	6*	4	3	500	98	735	20	94 1/4	18 3/8	46	112 5/8	39 3/4	52	34	45	10 1/4	59	3	2,500

* 6" - FLANGED CONNECTION
 H = DIMENSION FROM INLET TO TOP (SPECIFY) _____

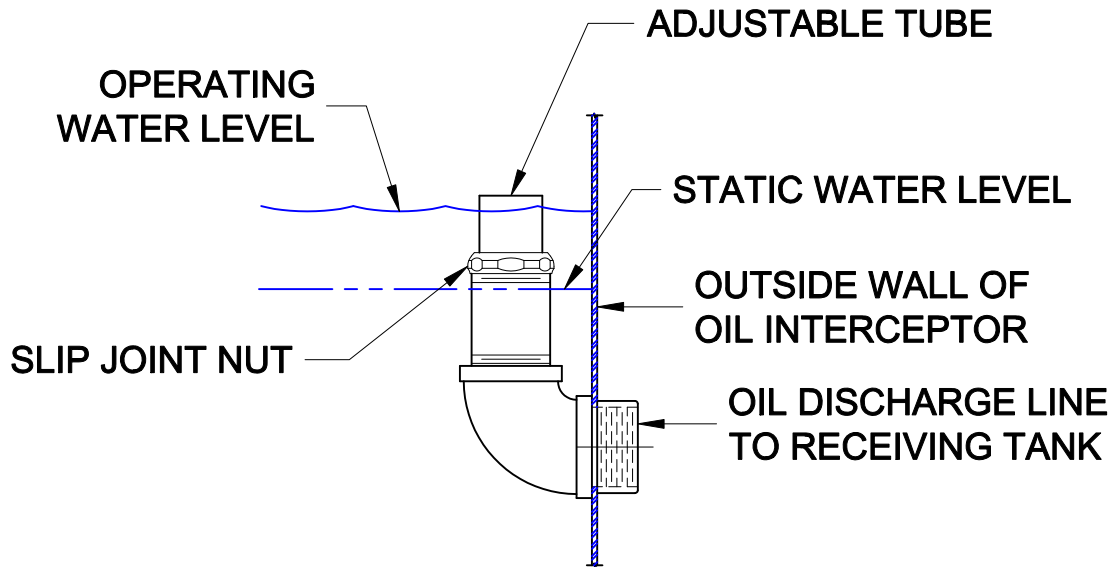
OPTIONS

Suffix	Description
<input type="checkbox"/> 26	ANCHOR FLANGE W/ CLAMP DEVICE
<input type="checkbox"/> HD	HEAVY DUTY TRAFFIC COVER
<input type="checkbox"/> SA	SACRIFICIAL ANODES

AutoCad.dwg

5400-5500

TYPICAL INSTALLATIONS, OPERATION & MAINTENANCE



OIL DRAW-OFF

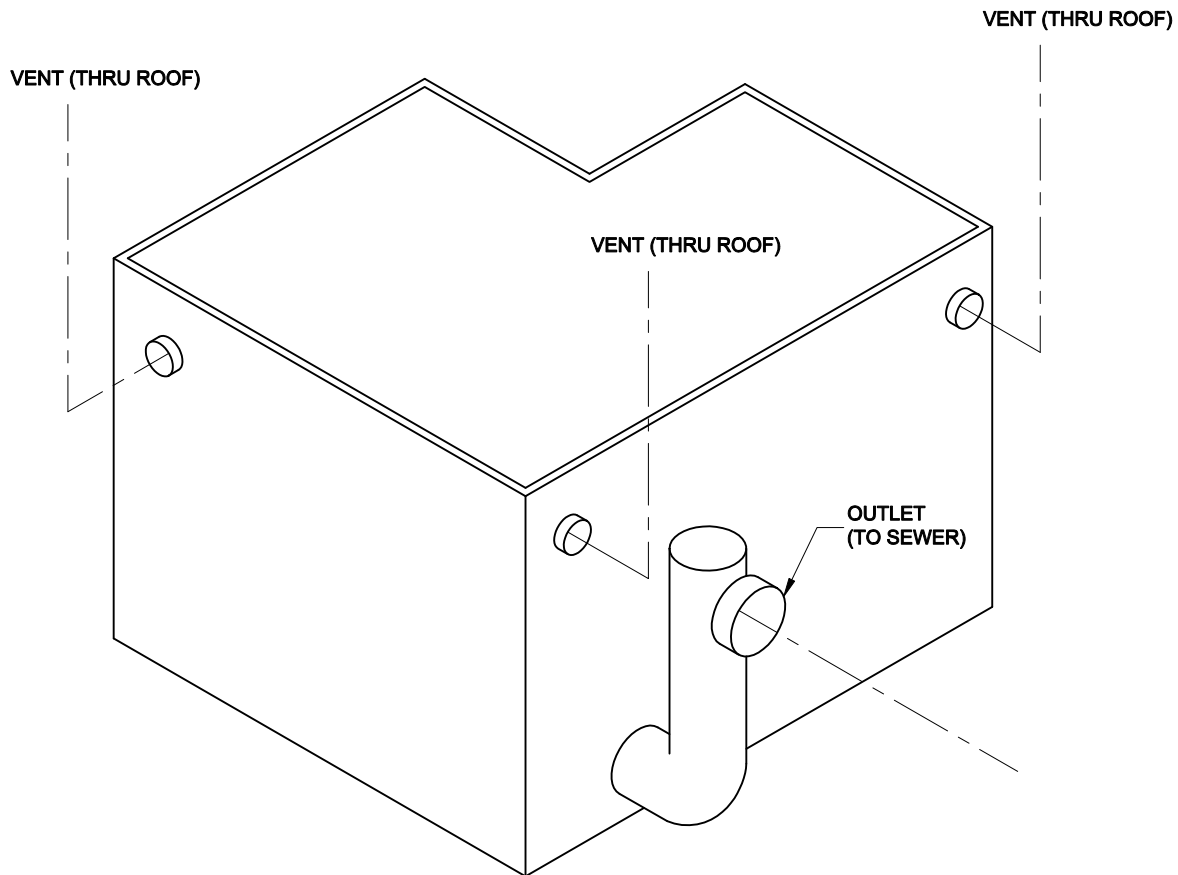
DRAW-OFF DEVICE IS ADJUSTABLE TO THE GRAVITY HEIGHT OF OIL AND GALLON-PER-MINUTE FLOW. IT CONNECTS INTO THE DISCHARGE PIPE FOR COLLECTION IN AN EXTERNAL TANK.

AFTER INTERCEPTOR IS INSTALLED, ESTABLISH OPERATING WATER LEVEL BY RUNNING WATER THROUGH THE UNIT AT MAXIMUM FLOW RATED EXPECTED. ADJUST THE VERTICAL DRAW-OFF PIPE 1/8" - 1/4" ABOVE WATER LINE.

PERIODIC CHECKING OF THIS LEVEL WILL ASSURE PROPER FUNCTIONING OF THE OIL DRAW-OFF. IF DRAWN OFF OIL CONTAINS WATER, ADJUST VERTICAL PIPE UNTIL ONLY OIL FLOWS FROM THE INTERCEPTOR.

5400-5500

TYPICAL INSTALLATIONS, OPERATION & MAINTENANCE



OIL INTERCEPTOR W/ INTEGRAL STORAGE TANK

INSTALLATIONS:

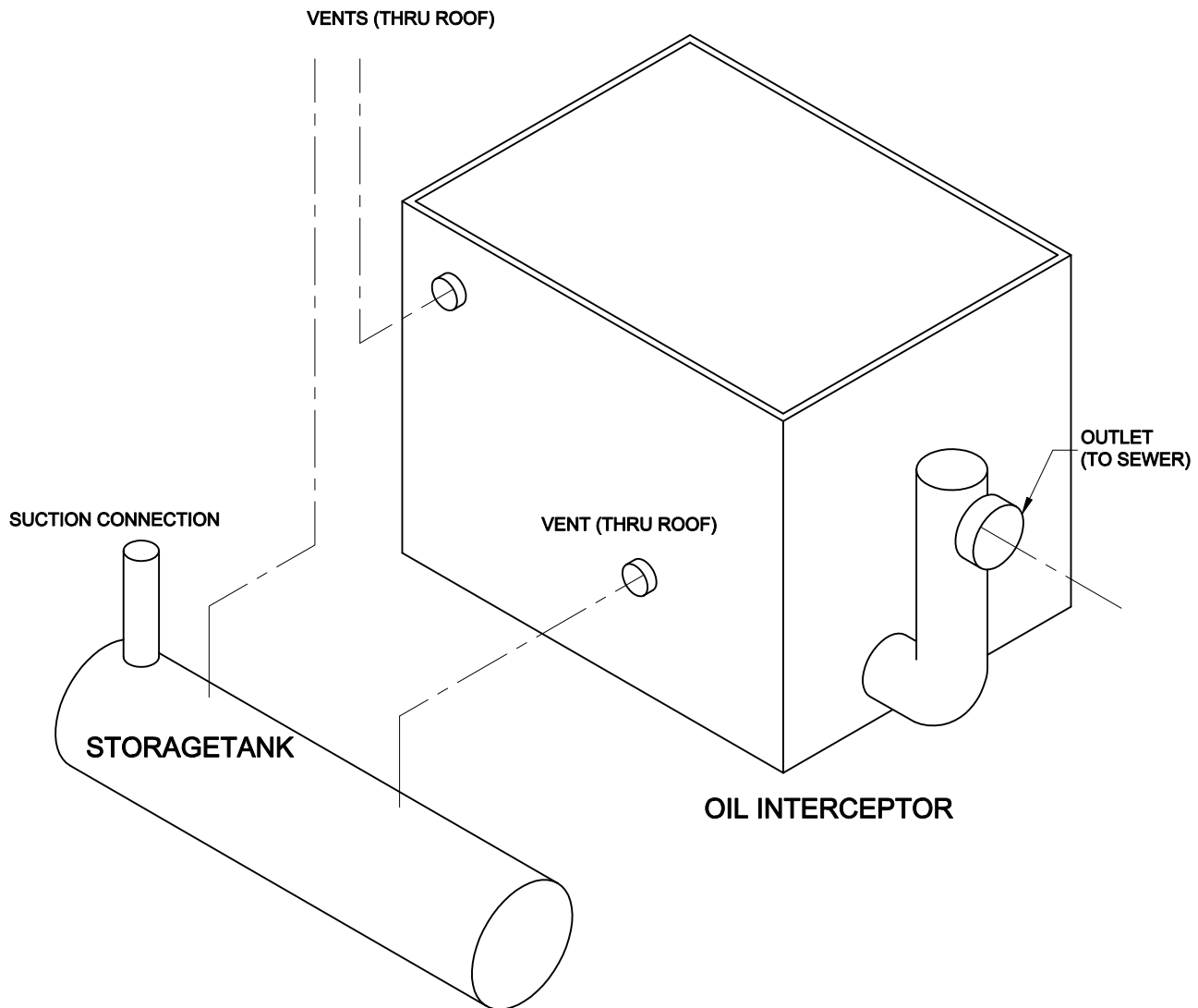
1. CHECK LOCAL CODE REQUIREMENTS BEFORE BEGINNING INSTALLATION.
2. VERIFY THAT NO OBSTRUCTIONS WILL BE PLACED OVER THE INTERCEPTOR AFTER INSTALLATION. A MINIMUM CLEARANCE EQUAL TO THE OVERALL HEIGHT OF THE INTERCEPTOR IS RECOMMENDED.
3. POSITION INTERCEPTOR SO THAT IT IS LEVEL AND CONNECT PIPING TO THE INLET AND OUTLET.
4. CONNECT PIPING TO THE INTERCEPTOR VENTS. VENTS TO ATMOSPHERE WITH EACH TERMINATING 12 INCHES ABOVE THE OTHER IS DESIRED.
5. THE INTERCEPTOR IS EQUIPPED WITH AN ADJUSTABLE SKIMMER TUBE AND SHOULD BE ADJUSTED AS SHOWN ON SHEET 2.

OIL INTERCEPTOR



5400-5500

TYPICAL INSTALLATIONS, OPERATION & MAINTENANCE



INSTALLATIONS:

1. CHECK LOCAL CODE REQUIREMENTS BEFORE BEGINNING INSTALLATION.
2. VERIFY THAT NO OBSTRUCTIONS WILL BE PLACED OVER THE INTERCEPTOR AFTER INSTALLATION. A MINIMUM CLEARANCE EQUAL TO THE OVERALL HEIGHT OF THE INTERCEPTOR IS RECOMMENDED.
3. POSITION INTERCEPTOR SO THAT IT IS LEVEL AND CONNECT PIPING TO THE INLET AND OUTLET.
4. CONNECT PIPING TO THE INTERCEPTOR VENTS. VENTS TO ATMOSPHERE WITH EACH TERMINATING 12 INCHES ABOVE THE OTHER IS DESIRED.
5. THE INTERCEPTOR IS EQUIPPED WITH AN ADJUSTABLE SKIMMER TUBE AND SHOULD BE ADJUSTED AS SHOWN ON SHEET 2.