

INTERCEPTOR ENCLOSURE



5100-FH

COATED STEEL INTERCEPTOR ENCLOSURE WITH SECURED GASKETED ANTI-SKID COVER, LIFT RING, ANCHOR FLANGE AND ADJUSTABLE SUPPORT CRADLE.

Approval Date

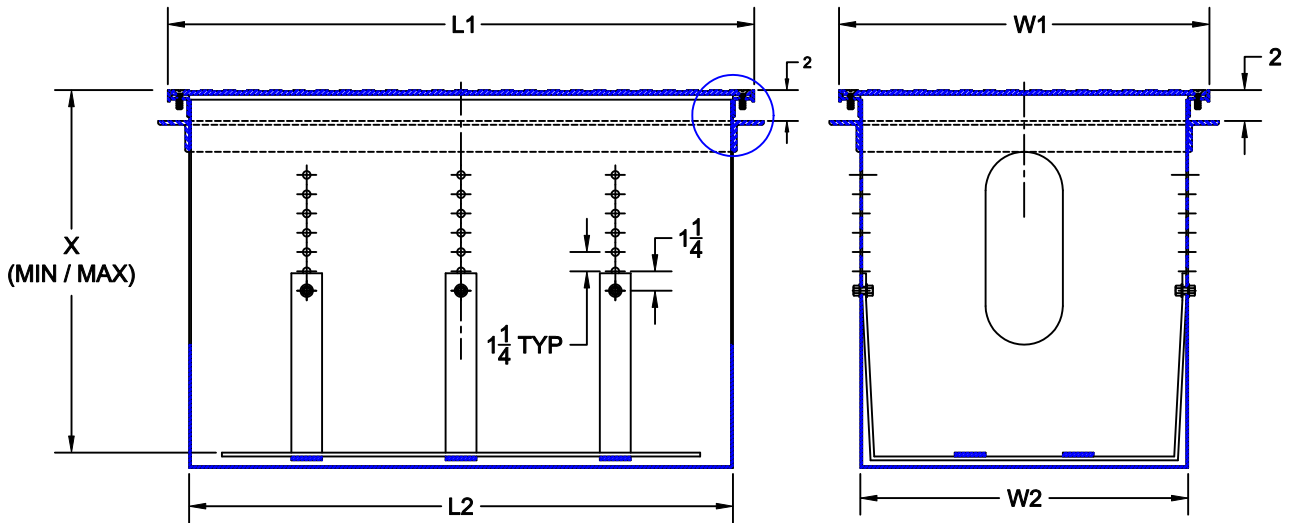
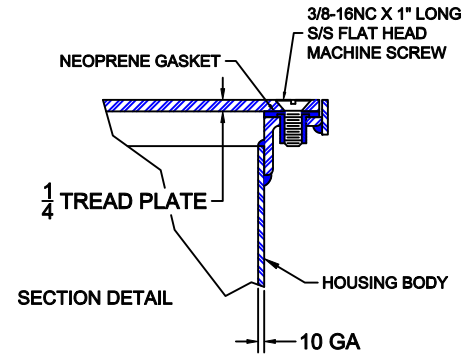
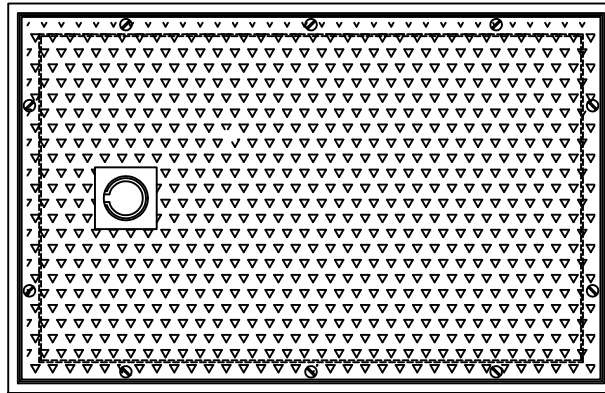
Customer Approval

Job Location

Job Name

Wade Division / Tyler Pipe Assumes No Responsibility For Superseded or Voided Data

Dimensional Data (Inches/mm) are Subject to Manufacturers Tolerance and Change Without Notice.



| CATALOG NUMBER | L1 | L2 | W1 | W2 | X | |
|----------------|--------|--------|--------|--------|-----|--------|
| | | | | | MIN | MAX |
| 5100-FH1 | 38 | 35 1/4 | 24 | 21 1/4 | 16 | 23 1/2 |
| 5100-FH2 | 40 1/4 | 37 1/2 | 28 1/4 | 25 1/2 | 24 | 31 1/2 |

INTERCEPTOR ENCLOSURE



5100-FH

INSTALLATION INSTRUCTIONS

Approval Date

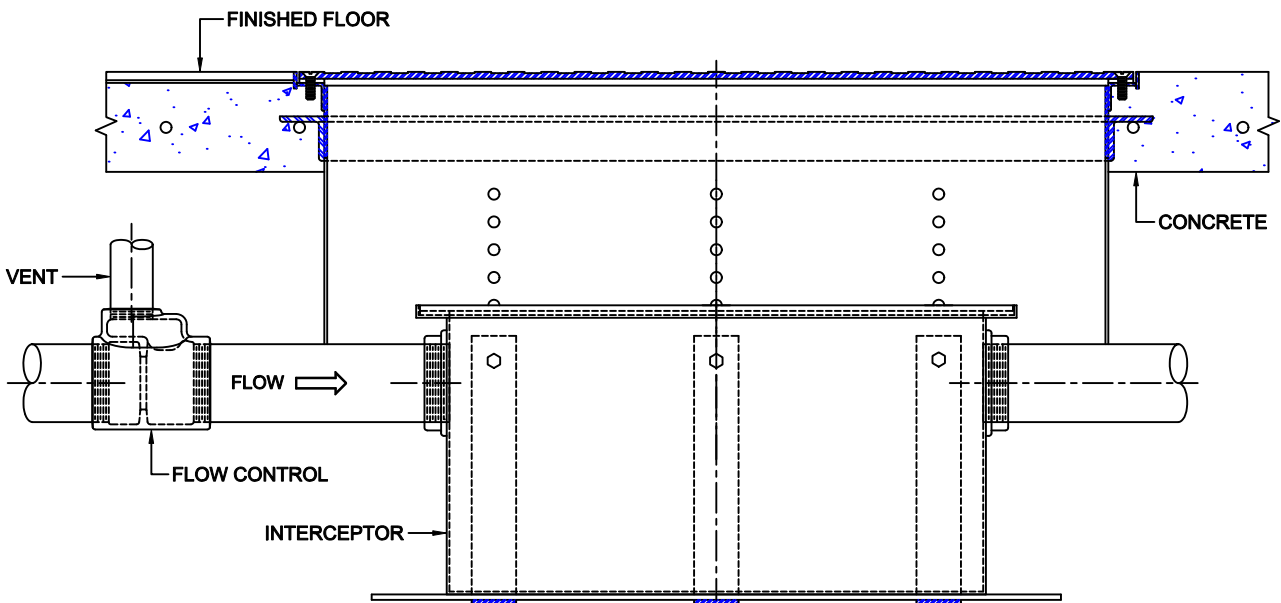
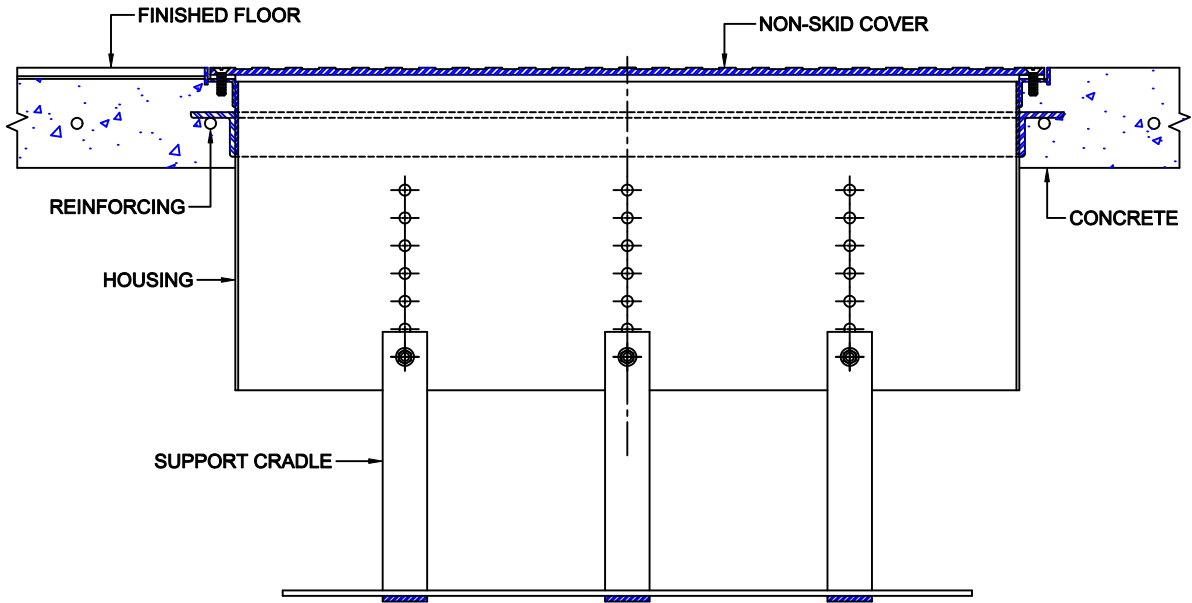
Customer Approval

Job Location

Job Name

Wade Division / Tyler Pipe Assumes No Responsibility For Superseded or Voided Data

Dimensional Data (Inches/mm) are Subject to Manufacturers Tolerance and Change Without Notice.



INSTALLATION

The all steel housing provides for below the floor installation of 5100, 5100-LR, 5100-JCX and 5100-LR-JCX interceptors. The anti-skid cover is secured and allows access to the interceptor with a lift ring. The internal support cradle is adjustable to position the interceptor at the drainage piping elevation.

The Wade 5100-FH is typically used in applications where the cradle is suspended into the basement ceiling. At the desired location, rough in the housing with the top at the anticipated finish floor level. Reinforced concrete is poured to the top of the housing. If a finished floor is to be applied such as tile, the flange should be at that anticipated dimension. The cradle is adjusted by removing the six hex bolts and nuts - position the cradle at the desired height and reinstall the bolts/nuts. The interceptor is installed through the top and rests on the cradle. Follow the installation instructions for the interceptor to be used.

AutoCad.dwg