

# IRMA ROOF DRAIN



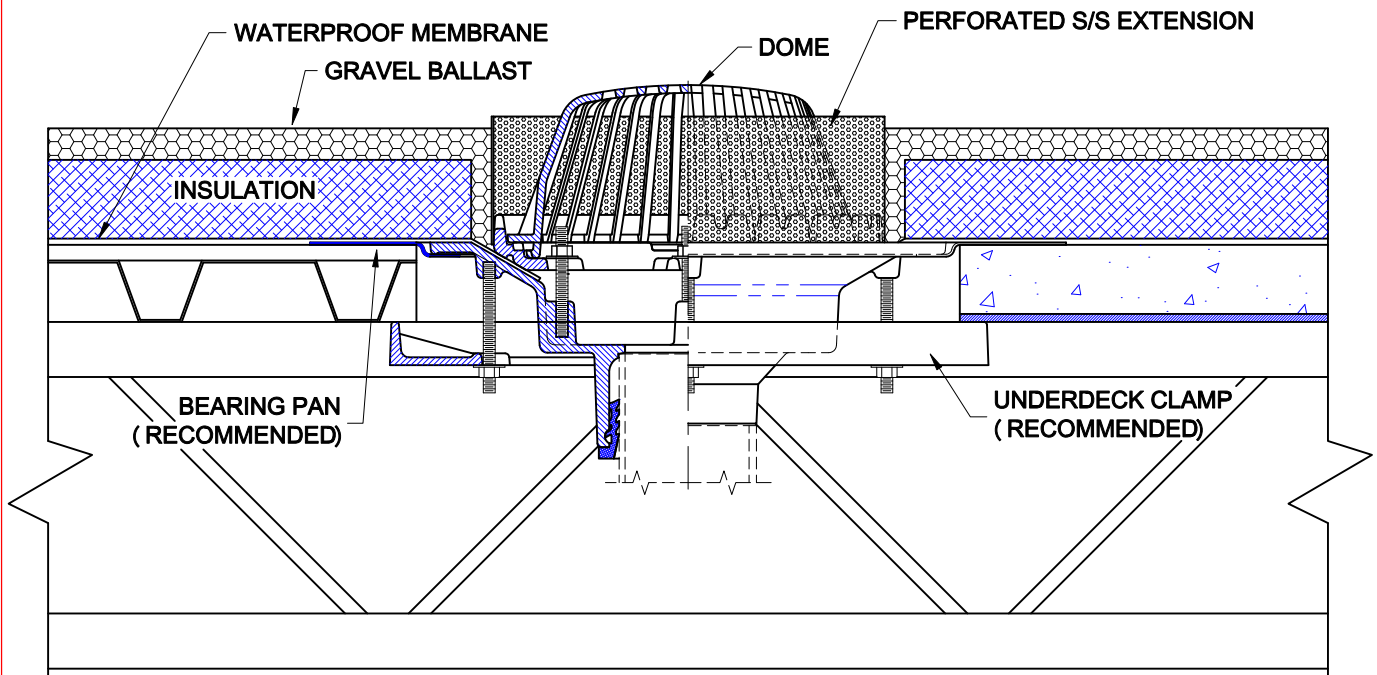
Approval  
Date

## 3000-DP

CAST IRON ROOF DRAIN WITH FLANGE, FLASHING RING INTEGRAL WITH MEMBRANE CLAMP, MUSHROOM DOME, S/S PERFORATED EXTENSION AND BOTTOM OUTLET.

Customer  
Approval

Wade Division / Tyler Pipe Assumes No Responsibility For Superseded or Voided Data



Job  
Location

Dimensional Data (Inches/mm) are Subject to Manufacturers Tolerance and Change Without Notice.

Job  
Name

## INSTALLATION

The Wade 3000-DP is used for inverted roof membrane insulated systems. The insulation thickness and depth of gravel ballast must be determined before ordering the drain assembly. The perforated stainless steel extension is furnished standard with a 4" high perforated extension. Special order heights are optional. For proper installation, an optional bearing pan and underdeck clamp are recommended.

1. At the predetermined location, cut a circular opening into the deck to receive the bearing pan. The pan is recessed to allow the drain body to sit almost flush with the deck.
2. Install the drain body into the bearing pan and secure with the underdeck clamp from underneath. Installation of piping may then proceed.
3. On the roof side, apply the waterproof membrane per manufacturers recommendations. Membrane must lay flat and contour the opening. Install the flashing ring / perforated extension with the provided hardware, securely fastening the membrane between the body and the flashing ring.
4. The dome is installed by a setting into the ring and twisting to lock.
5. The insulation is applied and cut around the perimeter of the perforated extension. Gravel ballast covers the insulation.

AutoCad.dwg

# IRMA ROOF DRAIN

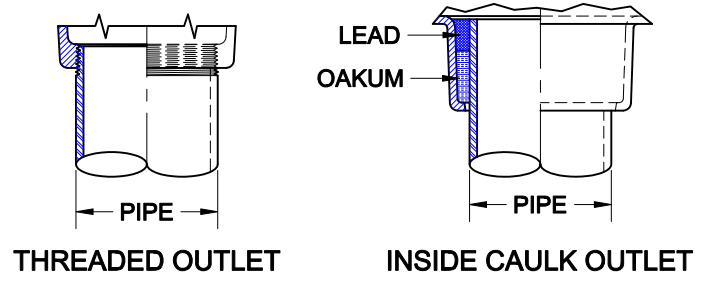
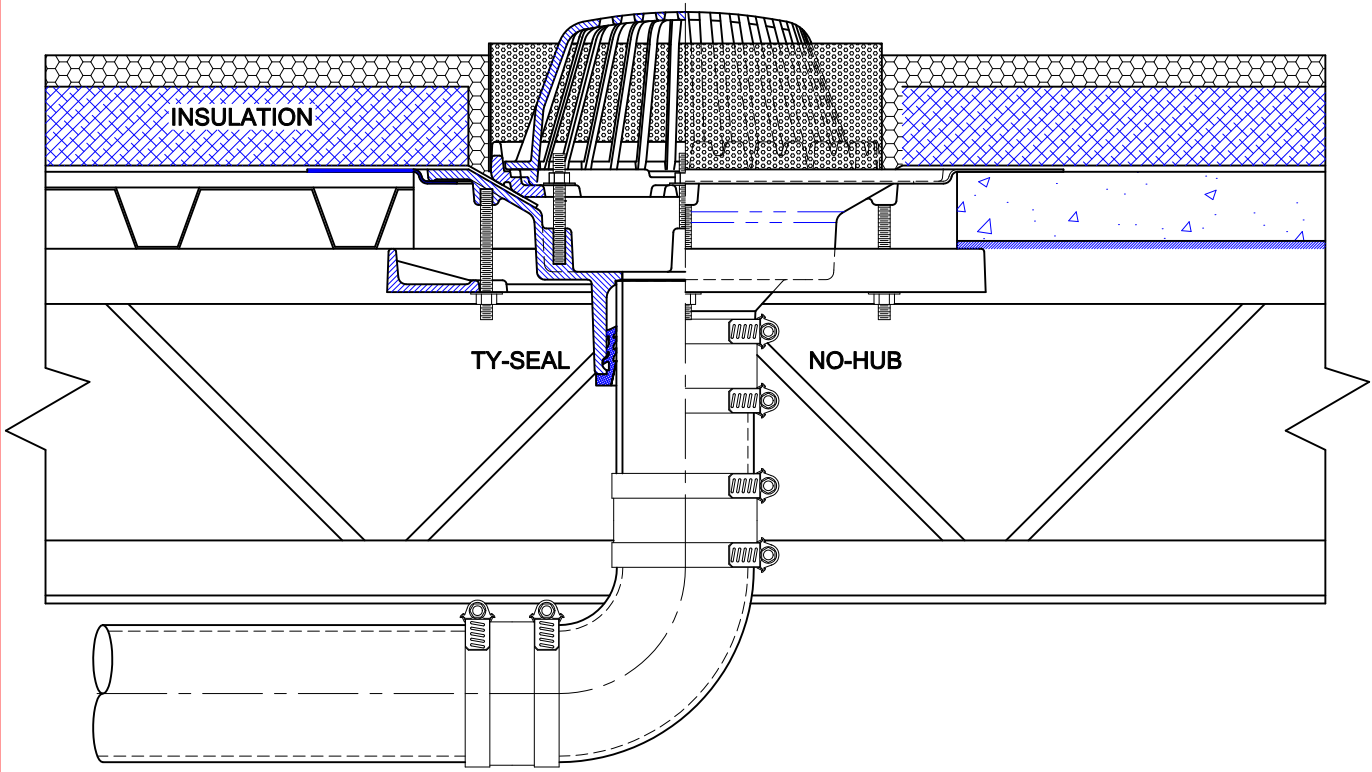


3000-DP

CAST IRON ROOF DRAIN WITH FLANGE, FLASHING RING INTEGRAL WITH MEMBRANE CLAMP, MUSHROOM DOME, S/S PERFORATED EXTENSION AND BOTTOM OUTLET.

Approval Date  
Customer Approval  
Job Location  
Job Name

Wade Division / Tyler Pipe Assumes No Responsibility For Superseded or Voids Data  
Tyler Pipe Assumes No Responsibility For Superseded or Voids Data  
are Subject to Manufacturers Tolerance and Change Without Notice.



## PIPE INSTALLATION

The drain piping is first run to an elevation below the roof drain. The drain body is secured to the pipe with any of four connections; No-Hub, Inside Caulk, Threaded or Push-On Ty-Seal. The type of connection must be specified upon ordering any Wade Drain. If the Ty-Seal connection is specified, apply Tyler Ty-Seal lubricant to the inside surfaces of the gasket and then firmly push the pipe into the hub until it contacts the pipe stop in the body. No-Hub outlets should be installed with Tyler or Anaco/Husky couplings and secured with a torque wrench to the manufacturers recommendations. Inside Caulk and threaded connections should follow standard industry practices. Once the body is connected to the pipe, the horizontal piping runs are sloped for gravity feed the the down pipe locations. The piping must be supported to recommended hanger spacings and insulated if required.

AutoCad.dwg