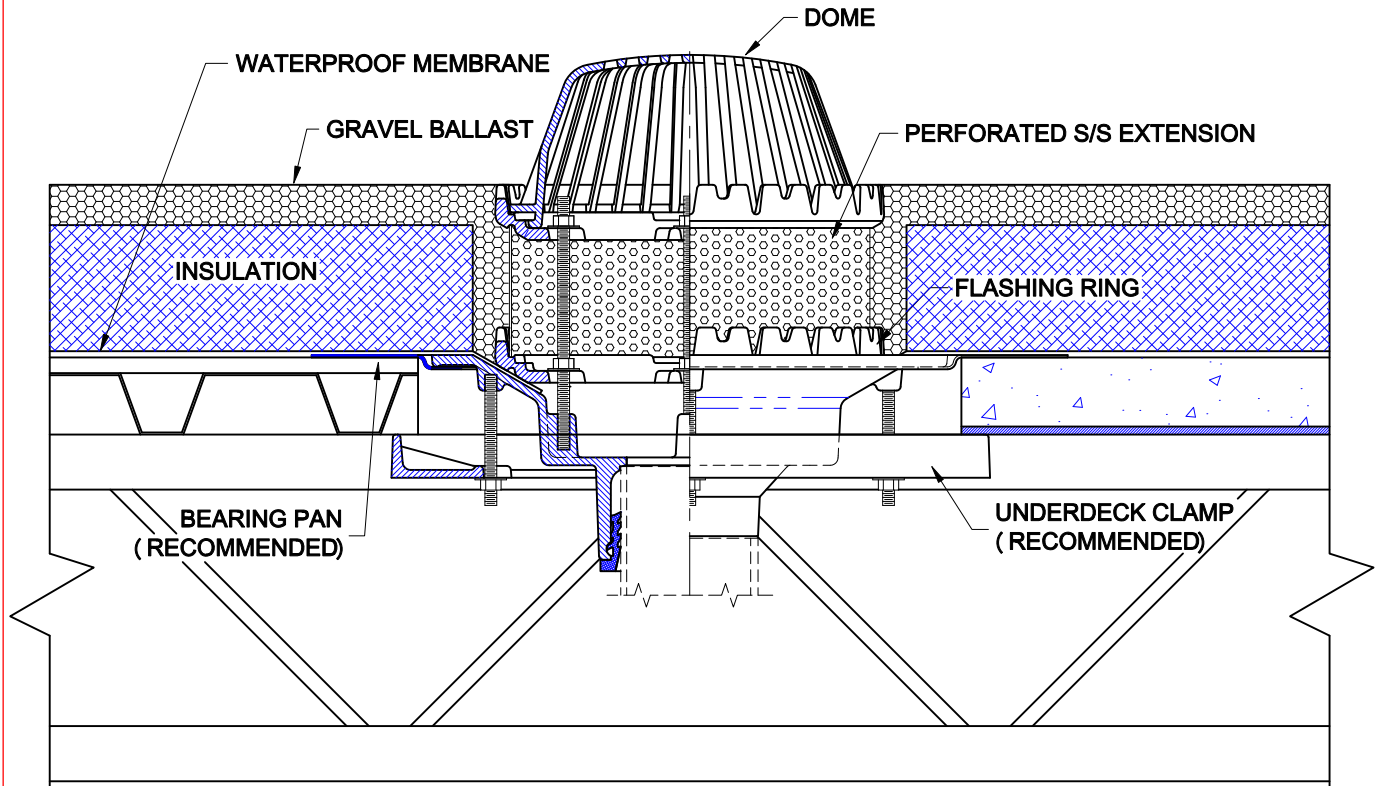


IRMA ROOF DRAIN



3000-DFS

CAST IRON ROOF DRAIN WITH FLANGE, FLASHING RING INTEGRAL WITH MEMBRANE CLAMP, MUSHROOM DOME, S/S PERFORATED EXTENSION AND BOTTOM OUTLET.



INSTALLATION

The Wade 3000-DFS is used for inverted roof membrane insulated systems. The insulation thickness and depth of gravel ballast must be determined before ordering the drain assembly. The perforated stainless steel extension is available in various standard heights and special order heights are optional. For proper installation, an optional bearing pan and underdeck clamp are recommended.

1. At the predetermined location, cut a circular opening into the deck to receive the bearing pan. The pan is recessed to allow the drain body to sit almost flush with the deck.
2. Install the drain body into the bearing pan and secure with the underdeck clamp from underneath. Installation of piping may then proceed.
3. On the roof side, apply the waterproof membrane per manufacturers recommendations. Membrane must lay flat and contour the opening. Install the flashing ring with the provided hardware, securely fastening the membrane between the body and the flashing ring.
4. The perforated stainless steel extension installs onto the flashing ring, sitting in a groove. A second flashing ring is provided and installs on top of the perforated extension seating into a groove on the bottom side of the flashing ring. Secure with the provided hardware. The dome is installed by a setting into the ring and twisting to lock.
5. The insulation is applied and cut around the perimeter of the perforated extension. Gravel ballast covers the insulation.

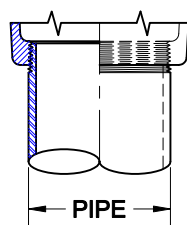
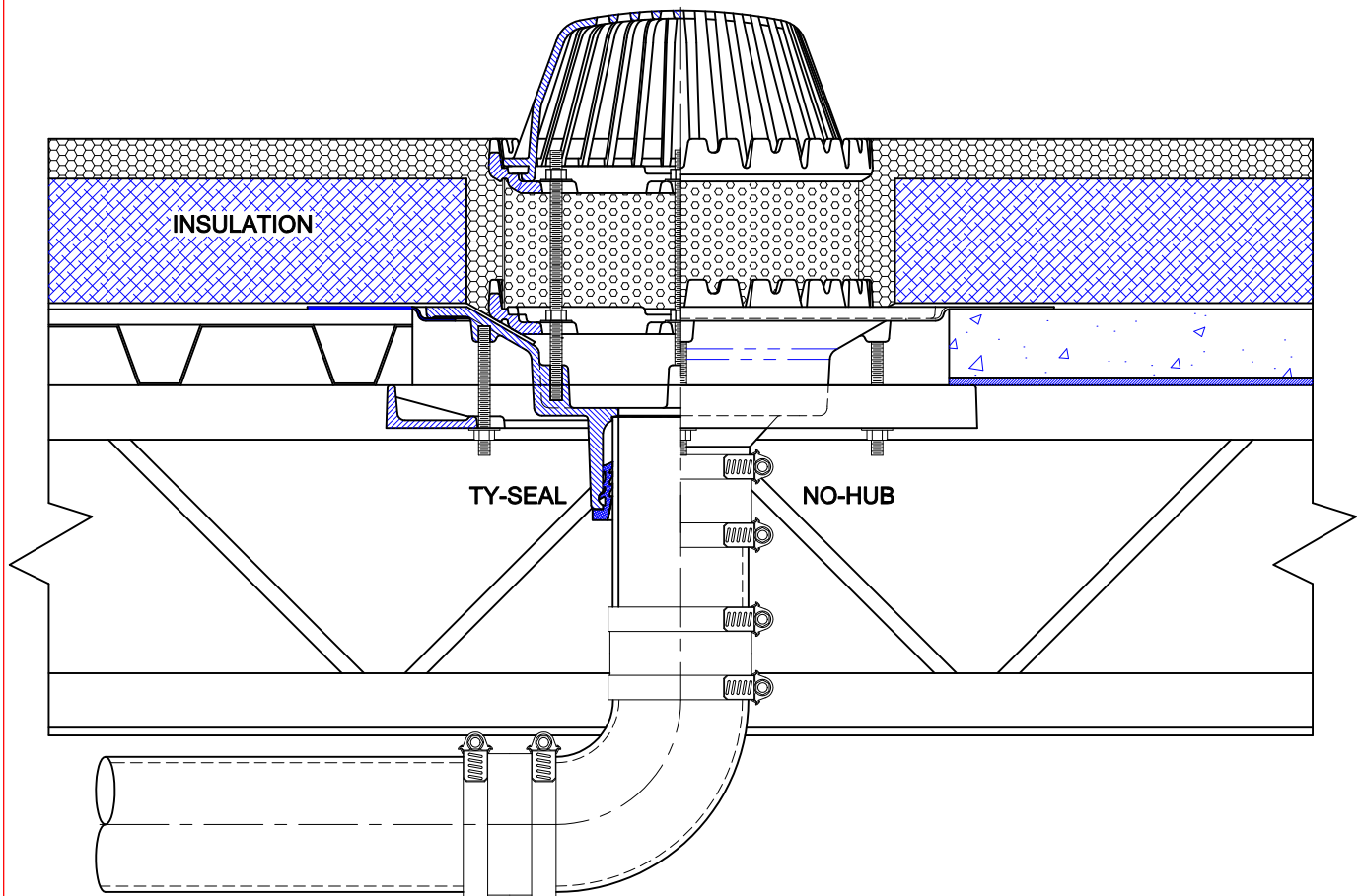
AutoCad.dwg

IRMA ROOF DRAIN

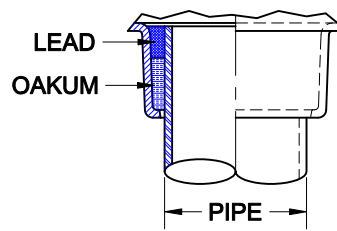


3000-DFS-B

CAST IRON ROOF DRAIN WITH FLANGE, FLASHING RING INTEGRAL WITH MEMBRANE CLAMP, MUSHROOM DOME, S/S PERFORATED EXTENSION AND BOTTOM OUTLET.



THREADED OUTLET



INSIDE CAULK OUTLET

PIPE INSTALLATION

The drain piping is first run to an elevation below the roof drain. The drain body is secured to the pipe with any of four connections; No-Hub, Inside Caulk, Threaded or Push-On Ty-Seal. The type of connection must be specified upon ordering any Wade Drain. If the Ty-Seal connection is specified, apply Tyler Ty-Seal lubricant to the inside surfaces of the gasket and then firmly push the pipe into the hub until it contacts the pipe stop in the body. No-Hub outlets should be installed with Tyler or Anaco/Husky couplings and secured with a torque wrench to the manufacturers recommendations. Inside Caulk and threaded connections should follow standard industry practices. Once the body is connected to the pipe, the horizontal piping runs are sloped for gravity feed the the down pipe locations. The piping must be supported to recommended hanger spacings and insulated if required.

Approval Date

Customer Approval

Job Location

Job Name

Wade Division / Tyler Pipe Assumes No Responsibility For Superseded or Voided Data. Dimensional Data (Inches/mm) are Subject to Manufacturers Tolerance and Change Without Notice.