

ISOLATION DRAIN / CLEANOUT



Approval Date

Customer Approval

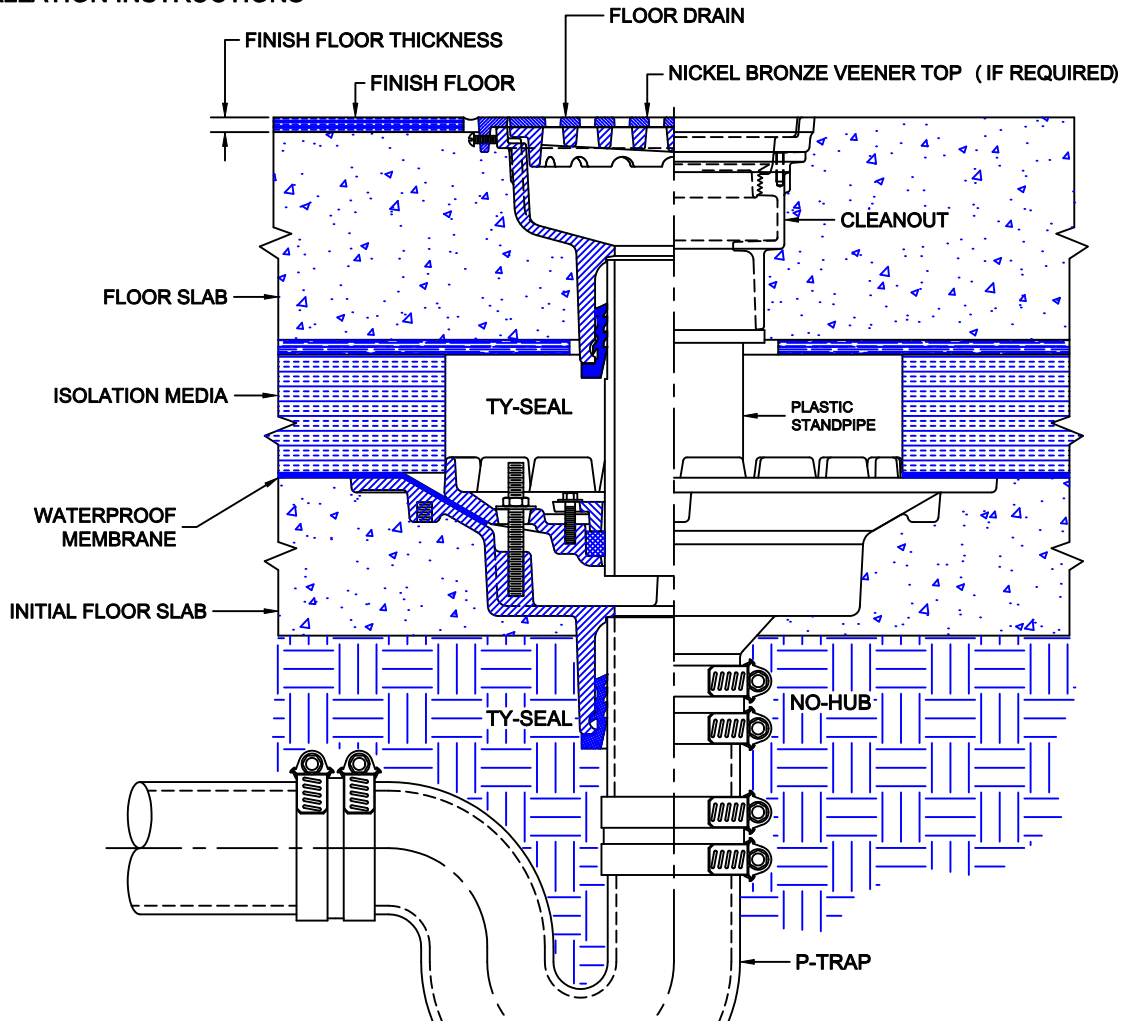
Job Location

Job Name

Wade Division / Tyler Pipe Assumes No Responsibility For Superseded or Voided Data
are Subject to Manufacturers Tolerance and Change Without Notice.

2000 SERIES

CAST IRON ISOLATION DRAIN / CLEANOUT WITH FLANGE, CLAMPING RING, 3" IPS PVC STANDPIPE, NEOPRENE GASKET AND BOTTOM OUTLET.
INSTALLATION INSTRUCTIONS



The Wade 2000 is designed for areas where building construction requires the drains / cleanouts to function in a floor structure which is independent of the concrete substructure. These types of floors are typical in sound isolation labs, mechanical rooms, studios and computer rooms. The drain piping is first run to an elevation below the expected finish floor level. The piping must include a p-trap and the drain body is secured to the pipe with any of four connections; Threaded, No-Hub, Inside Caulk, or Push-On Ty-Seal. The type of connection must be specified upon ordering any Wade Drain. If the Ty-Seal connection is specified, apply Tyler Ty-Seal lubricant to the inside surfaces of the gasket and then firmly push the drain body onto the pipe until it contacts the pipe stop in the body. No-Hub outlets should be installed with Tyler or Anaco/Husky couplings and secured with a torque wrench to the manufacturers recommendations. Threaded or Inside Caulk connections should follow standard industry practices.

Once the body is connected to the pipe, the initial concrete sub-floor is poured to an elevation level with the top flange of the drain body. The waterproofing membrane is applied to the the sub-floor surface and over the drain body. The clamping ring is then placed onto the drain and secured - the membrane must be clamped between the body and the clamping ring. The upper drain or cleanout is secured to the standpipe and adjusted to the floating deck elevation. The isolation media is applied on top of the membrane. The upper drain / cleanout should be at the finish floor level or slightly below. If a finish floor is to be applied, the top of the drain should extend above the structural slab to a dimension of the thickness of the floor material.

Care must be taken to protect the top during installation. Use either cardboard, tape or other materials to protect the top during construction.