

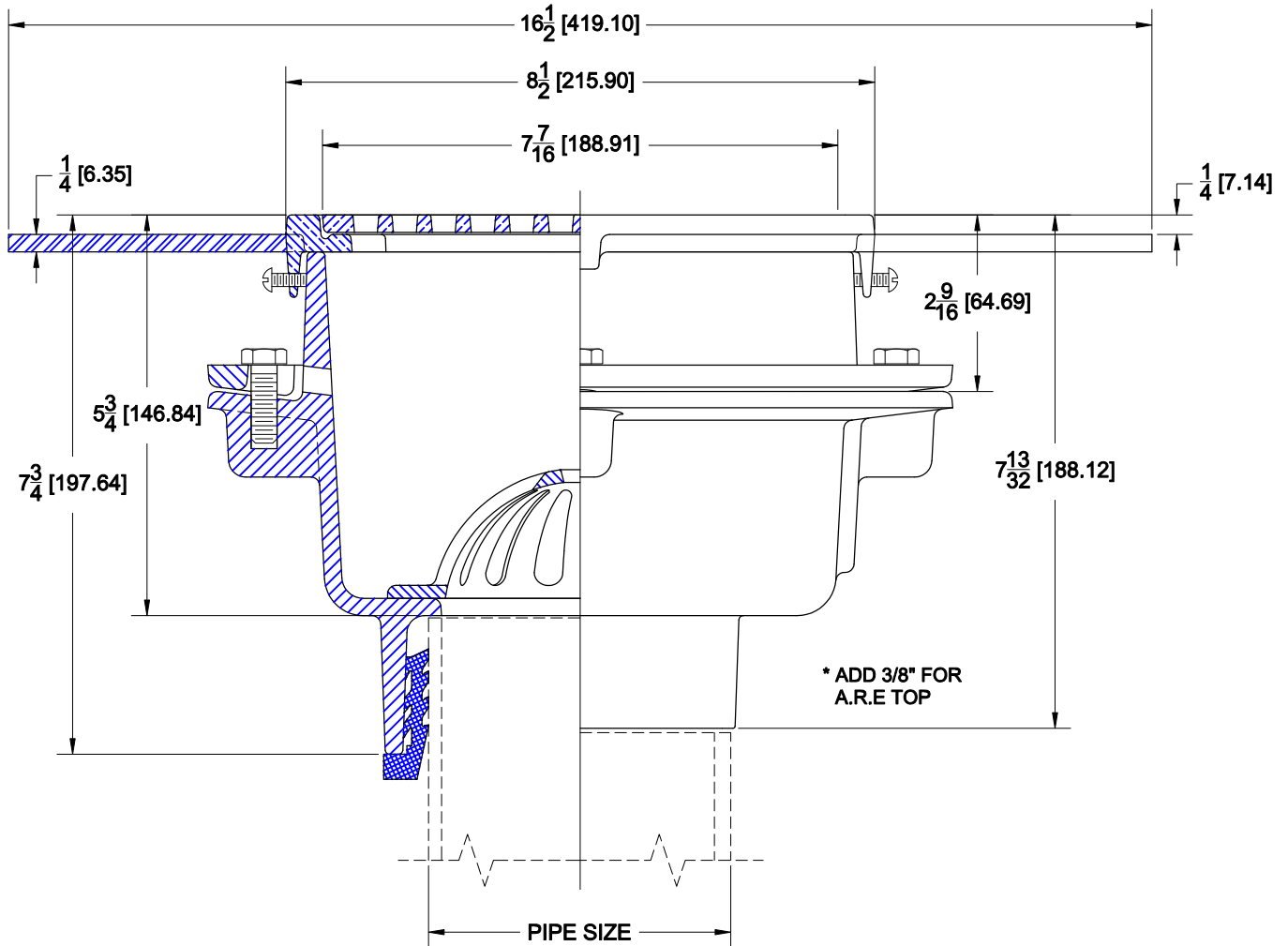
FLOOR SINKS - SQUARE



9110-E

CAST IRON 8" SQUARE FLOOR SINK WITH 6" DEEP SUMP, A.R.E. INTERIOR, WIDE ELASTOMERIC FLANGE, ALUMINUM DOME BOTTOM STRAINER AND NICKEL BRONZE TOP WITH SECURED GRATE.

GRATE FREE AREA:
16.0 SQ.IN. (NB)



OUTLETS

Suffix	Description
<input type="checkbox"/> NH	NO-HUB (3, 4")
<input type="checkbox"/> TY	TY-SEAL
<input type="checkbox"/> IC	INSIDE CAULK (3, 4")

OPTIONS

Cat. No.	Pipe Size	Wt. Lbs.	Suffix	Description
<input type="checkbox"/> 9112-E	2 (50)	25.0	<input type="checkbox"/> 6	TRAP PRIMER CONNECTION (1/2" NPT)
<input type="checkbox"/> 9113-E	3 (75)	25.0	<input type="checkbox"/> 14	HINGED GRATE
<input type="checkbox"/> 9114-E	4 (100)	25.0	<input type="checkbox"/> 15	HALF GRATE
			<input type="checkbox"/> 16	THREE QUARTER GRATE
			<input type="checkbox"/> 26	CLAMP DEVICE
			<input type="checkbox"/> 27	ALUMINUM SEDIMENT BUCKET

NOTE: TY-SEAL OUTLETS WILL ACCOMODATE IPS PIPE SIZES IN 2", 3" & 4" ONLY. (PLASTIC, STEEL, ETC.)

AutoCad.dwg