

SQUARE FLOOR DRAIN



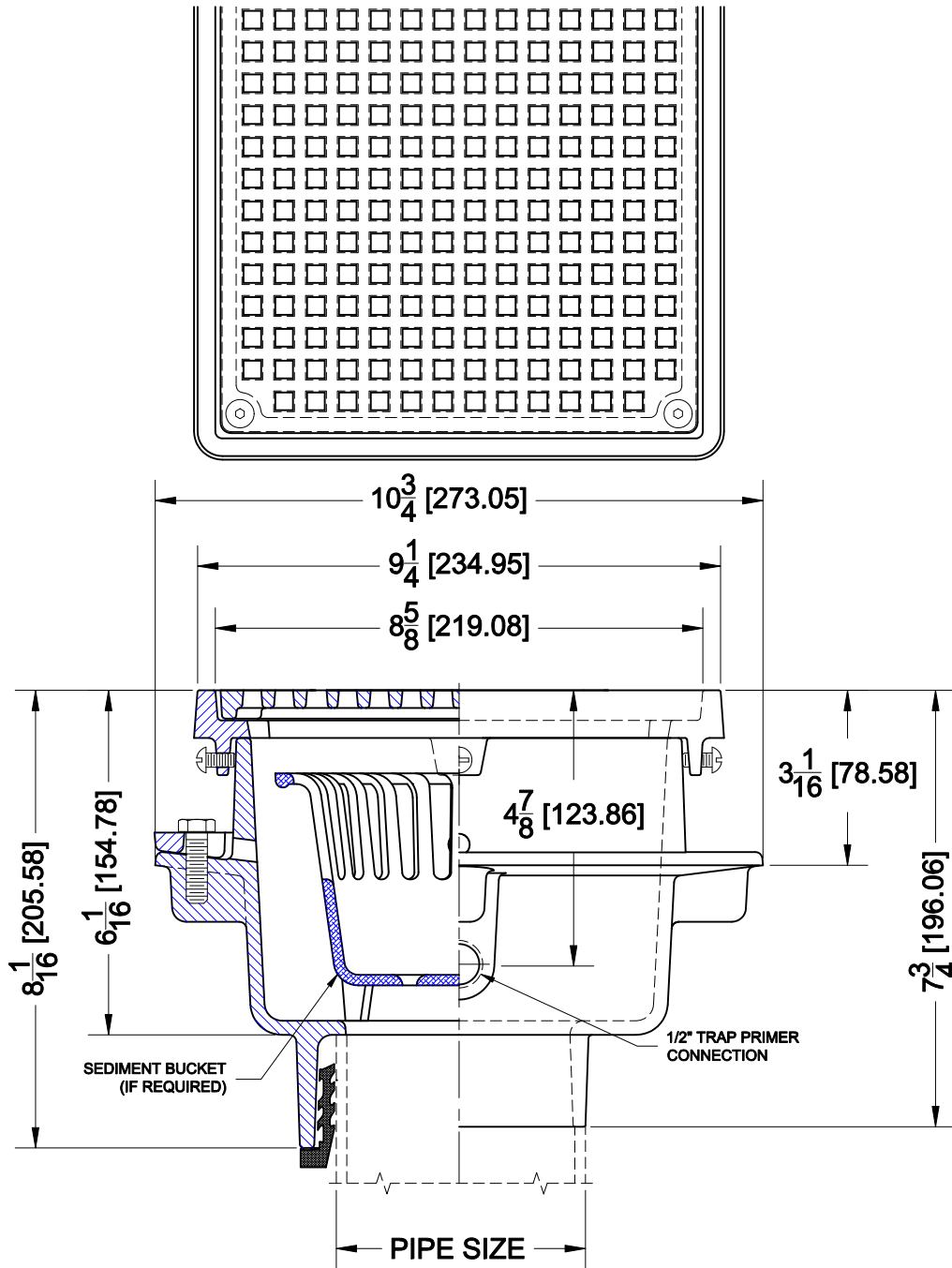
Approval Date

Customer Approval

Job Location

Job Name

9110-12
 CAST IRON A.R.E. COATED SQUARE FLOOR SINK WITH PAINTED HEEL PROOF DUCTILE IRON GRATE, TRAP PRIMER CONNECTION, FLASHING FLANGE AND BOTTOM OUTLET.
 Wade Division / Tyler Pipe Assumes No Responsibility For Superseded or Voided Data
 Dimensional Data (Inches/mm) are Subject to Manufacturers Tolerance and Change Without Notice.



OPTIONS

Cat. No.	Pipe Size	Wt. Lbs.	Suffix	Description
<input type="checkbox"/> 9112-12	2 (50)	25.0	<input type="checkbox"/> 5	VANDAL PROOF
<input type="checkbox"/> 9113-12	3 (75)	26.0	<input type="checkbox"/> 9	DOMED BOTTOM STRAINER
<input type="checkbox"/> 9114-12	4 (100)	26.0	<input type="checkbox"/> 26	CLAMP DEVICE
			<input type="checkbox"/> 27	ALUMINUM SEDIMENT BUCKET
			<input type="checkbox"/> 31	BACKWATER VALVE
			<input type="checkbox"/> 39	GALVANIZED IRON PARTS

AutoCad.dwg