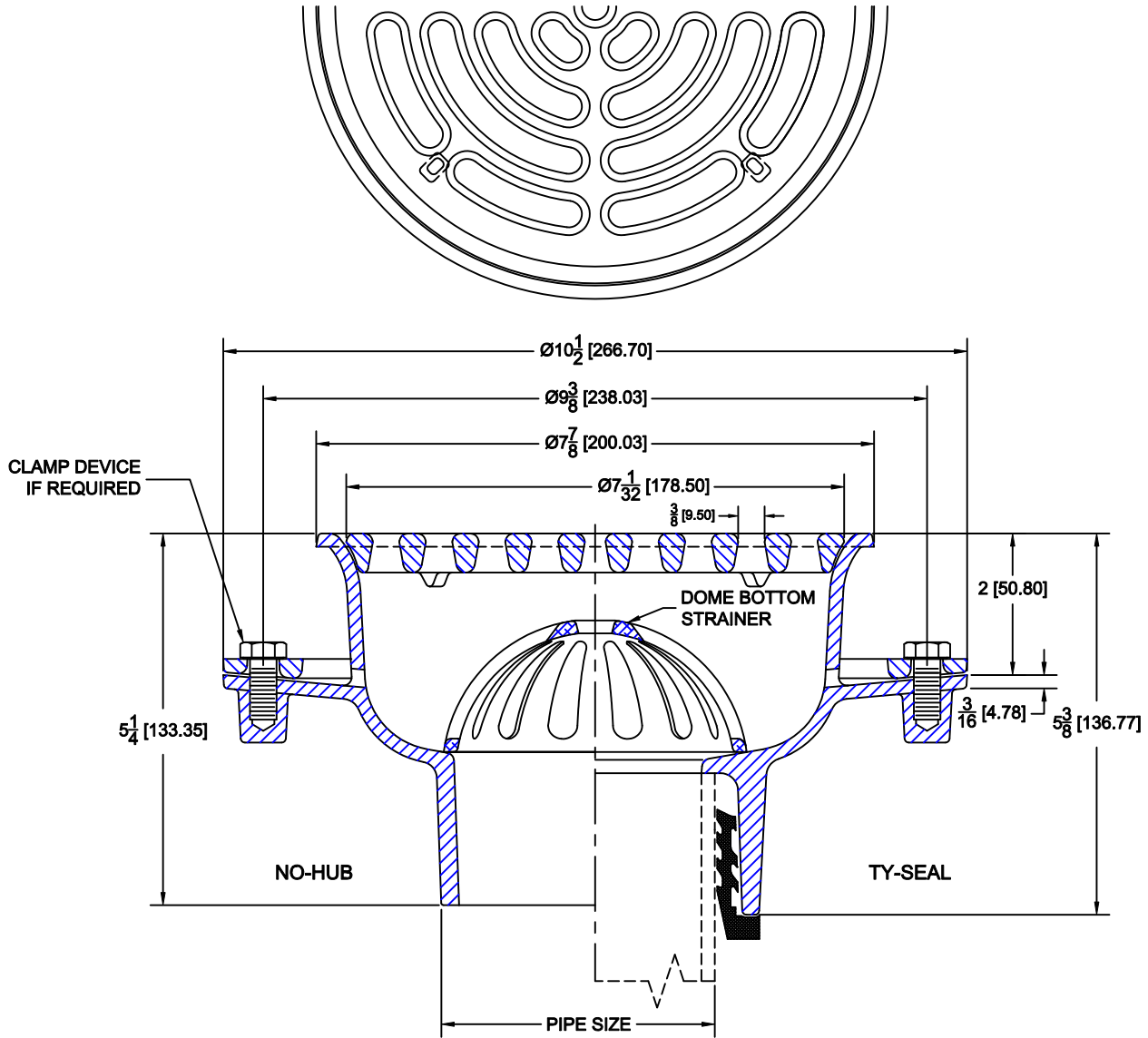


FLOOR SINKS



9000-64

CAST IRON A.R.E. COATED ROUND FLOOR SINK WITH SEEPAGE FLANGE, PLASTIC DOME BOTTOM STRAINER, FULL A.R.E. GRATE & BOTTOM OUTLET.



OPTIONS

Cat. No.	Pipe Size	Wt. Lbs.	Suffix	Description
<input type="checkbox"/> 9002-64	2 (50)	34.0	<input type="checkbox"/> 15	HALF GRATE
<input type="checkbox"/> 9003-64	3 (75)	35.0	<input type="checkbox"/> 16	THREE QUARTER GRATE
<input type="checkbox"/> 9004-64	4 (100)	36.0	<input type="checkbox"/> 17	GRATE W/ CENTER HOLE
			<input type="checkbox"/> 26	CLAMP DEVICE
			<input type="checkbox"/> 27	ALUMINUM SEDIMENT BUCKET

OUTLETS

Suffix	Description
<input type="checkbox"/> NH	NO-HUB
<input type="checkbox"/> TY	TY-SEAL

AutoCad.dwg