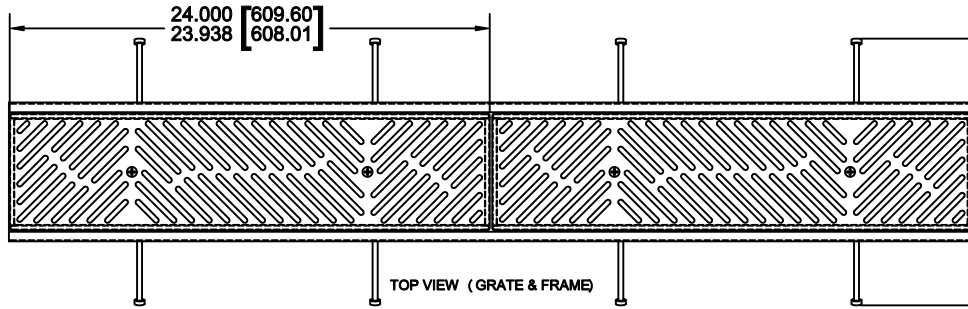


HDPE TRENCH DRAIN SYSTEM

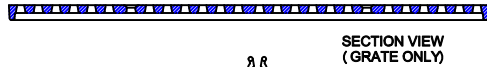


WN900-BDK-SLS4

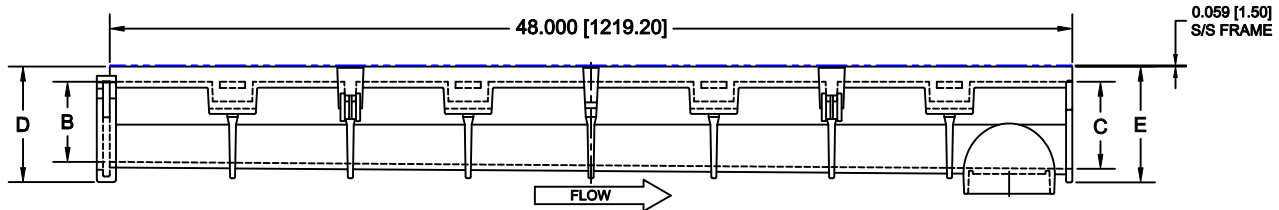
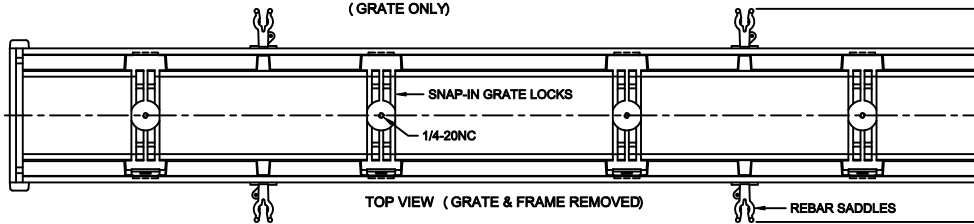
HIGH DENSITY POLYETHYLENE 6" (150) WIDE TRENCH DRAIN WITH 4" (100) THROAT, RADIUS BOTTOM, 304 S/S STEEL FRAME WITH ANCHORS, SATIN NICKEL BRONZE DIAGONAL DECORATIVE PATTERN GRATES, LOCK DEVICES, INTEGRAL OUTLET, REBAR SADDLES AND BANK GRATE INSERTS.



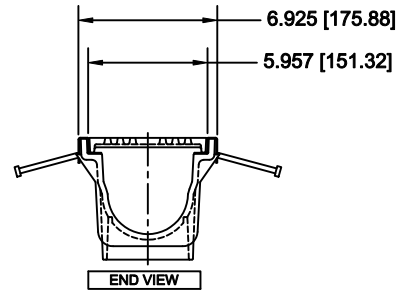
DIN RATING A
ANSI CLASS - LD



GRATE FREE AREA = 40.5 SQ.IN (EACH)
TWO GRATES PER SECTION = 81.0 SQ.IN.



END CODE	CATALOG NUMBER	FLOW RATE		DIMENSIONS INCHES (MM)				WT LBS
		(GPM)	(LPM)	B	C	D	E	
AA	090N	75	284	3.998 (101.5)	3.998 (101.5)	5.354 (136.0)	5.760 (146.3)	7.45
AB	091	75	284	3.998 (101.5)	4.334 (110.1)	5.690 (144.5)	5.770 (146.6)	7.52
BB	091N	89	337	4.334 (110.1)	4.334 (110.1)	5.692 (144.6)	6.103 (155.0)	7.81
BC	092	89	337	4.334 (110.1)	4.670 (118.6)	6.026 (153.0)	6.106 (155.1)	7.92
CD	093	103	390	4.670 (118.6)	5.006 (127.1)	6.362 (161.6)	6.442 (163.6)	8.27
DE	094	117	443	5.006 (127.1)	5.342 (135.6)	6.698 (170.1)	6.778 (172.1)	8.64
EE	094N	131	496	5.342 (135.6)	5.342 (135.6)	6.700 (170.2)	7.111 (180.6)	8.93
EF	095	131	496	5.342 (135.6)	5.678 (144.2)	7.034 (178.6)	7.114 (180.7)	8.99
FG	096	145	549	5.678 (144.2)	6.014 (152.7)	7.370 (187.2)	7.450 (189.2)	9.37
GH	097	159	602	6.014 (152.7)	6.350 (161.3)	7.706 (195.7)	7.786 (197.7)	9.74
HH	097N	173	655	6.350 (161.3)	6.350 (161.3)	7.708 (195.8)	8.119 (206.2)	10.04
HI	098	173	655	6.350 (161.3)	6.686 (169.8)	8.042 (204.2)	8.122 (206.3)	10.11
IJ	099	187	708	6.686 (169.8)	7.022 (178.3)	8.378 (212.8)	8.458 (214.8)	10.48
JK	100	201	761	7.022 (178.3)	7.358 (186.9)	8.714 (221.3)	8.794 (223.3)	10.85
KK	100N	215	814	7.358 (186.9)	7.358 (186.9)	8.716 (221.4)	9.127 (231.8)	11.15
KL	101	215	814	7.358 (186.9)	7.694 (195.4)	9.050 (229.8)	9.130 (231.9)	11.23
LM	102	229	867	7.694 (195.4)	8.030 (203.9)	9.386 (238.4)	9.466 (240.4)	11.60
MN	103	243	920	8.030 (203.9)	8.366 (212.5)	9.722 (246.9)	9.802 (248.9)	11.97
NN	103N	257	973	8.366 (212.5)	8.366 (212.5)	9.724 (247.0)	10.135 (257.4)	12.27
NO	104	257	973	8.366 (212.5)	8.702 (221.0)	10.058 (255.4)	10.138 (257.5)	12.34
OP	105	271	1026	8.702 (221.0)	9.038 (229.5)	10.394 (264.0)	10.474 (266.0)	12.71
PQ	106	285	1079	9.038 (229.5)	9.374 (238.1)	10.730 (272.5)	10.810 (274.5)	13.08
QQ	106N	299	1132	9.374 (238.1)	9.374 (238.1)	10.732 (272.6)	11.143 (283.0)	13.38
QR	107	299	1132	9.374 (238.1)	9.710 (246.6)	11.066 (281.0)	11.146 (283.1)	13.45
RS	108	313	1185	9.710 (246.6)	10.046 (255.1)	11.402 (289.6)	11.482 (291.6)	13.83
ST	109	327	1238	10.046 (255.1)	10.382 (263.7)	11.738 (298.1)	11.818 (300.1)	14.20
TT	109N	341	1291	10.382 (263.7)	10.382 (263.7)	11.740 (298.2)	12.151 (308.6)	14.50
TU	110	341	1291	10.382 (263.7)	10.718 (272.2)	12.074 (306.6)	12.154 (308.7)	14.57
UV	111	355	1344	10.718 (272.2)	11.054 (280.7)	12.410 (315.2)	12.490 (317.2)	14.94
VW	112	368	1393	11.054 (280.7)	11.390 (289.3)	12.746 (323.7)	12.826 (325.7)	15.31
WW	112N	382	1446	11.390 (289.3)	11.390 (289.3)	12.785 (324.7)	13.158 (334.2)	15.61
WX	113	382	1446	11.390 (289.3)	11.726 (297.8)	13.082 (332.3)	13.162 (334.3)	15.69
XY	114	396	1499	11.726 (297.8)	12.062 (306.3)	13.418 (340.8)	13.498 (342.8)	16.06



NOTE: WEIGHTS LISTED IN CHART ARE FOR TRENCH DRAIN SECTIONS ONLY - STAINLESS STEEL FRAME AND GRATE WEIGHTS MUST BE ADDED FOR TOTAL GRATE AND FRAME WEIGHT 7.0 LBS

OPTIONS

Suffix Description

- UEP Universal End Plate
- US__ Universal Side Outlet End Plate *
 - 2" 3" 4" 6"
- PA__ PVC Outlet Adapter
 - 2" 3" 4" 6"
- NH__ No-Hub Outlet Adapter
 - 2" 3" 4" 6" *

* Rubber Sleeve Connection

AutoCad.dwg

Approval Date _____
 Customer Approval _____
 Job Location _____
 Job Name _____
 Dimensional Data (Inches/mm) are Subject to Manufacturers Tolerance and Change Without Notice. Wade Division / Tyler Pipe Assumes No Responsibility For Superseded or Voided Data