

# Lavatory Carrier



## 510-KG

Exposed arm lavatory carrier with pipe uprights, welded base feet and level/lock hardware.

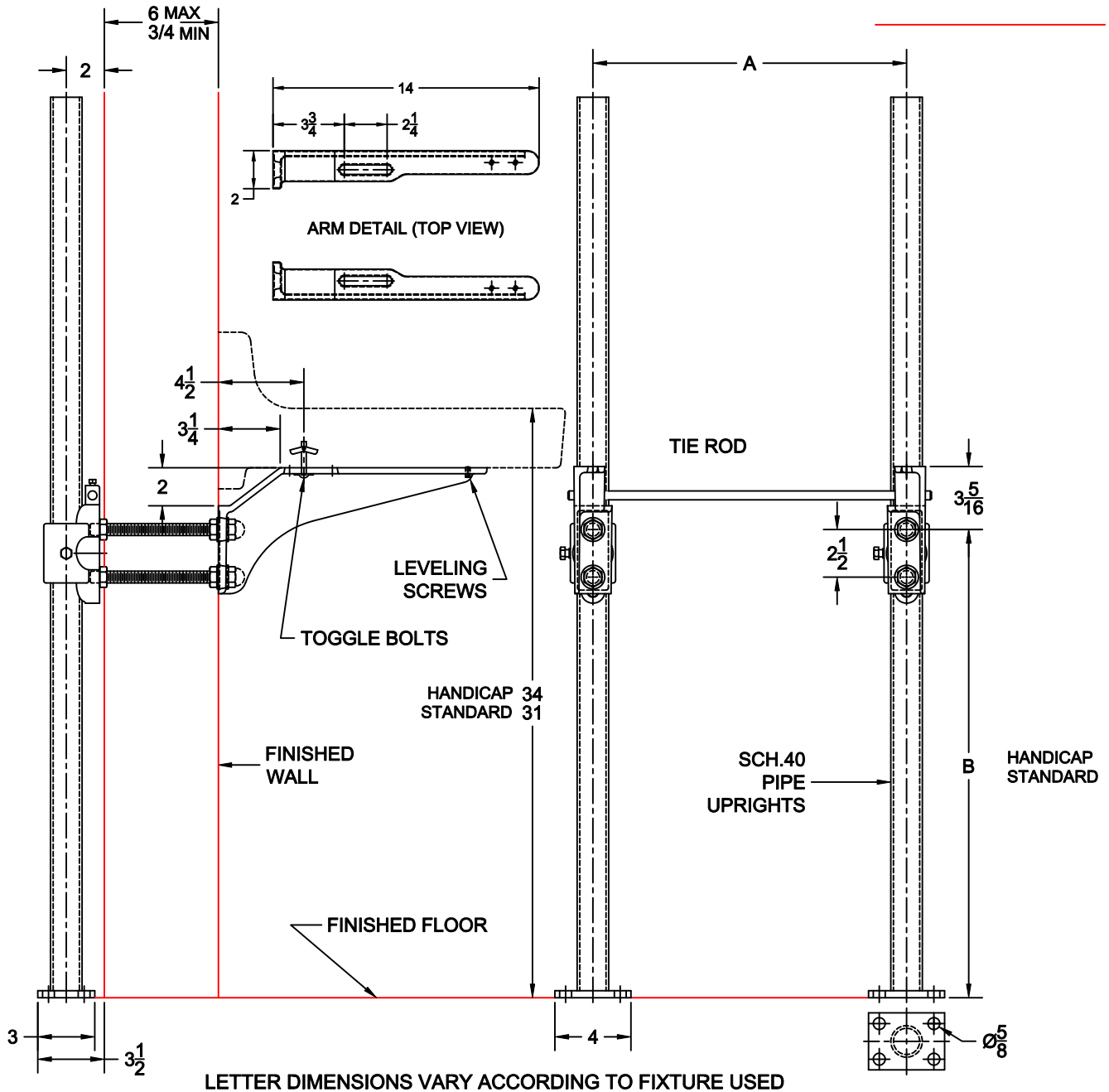
Arms - A.R.E. Coated Aluminum

## FIXTURE

Manufacturer \_\_\_\_\_

Name \_\_\_\_\_ No. \_\_\_\_\_

Style \_\_\_\_\_



### OPTIONS

Cat. No.	Type	Wt. Lbs.	Suffix	Description
<input type="checkbox"/> 510-KG	Single	38.0	<input type="checkbox"/> M36	Rectangular Steel Uprights
			<input type="checkbox"/>	

AutoCad.dwg