

OIL INTERCEPTOR



5400

FABRICATED STEEL OIL INTERCEPTOR WITH GRAY EPOXY COATED FINISH INSIDE AND OUTSIDE, FIXED BAFFLES, INTERNAL FLOW CONTROL ORIFICE PLATE, GASKETED NON-SKID COVERS, RECESSED SECURING SCREWS, AIR RELIEF AND NO-HUB OR THREADED INLET/OUTLET.
 MATERIALS: BODY - 10 GA COVER - 7 GA TREAD PLATE

Approval Date

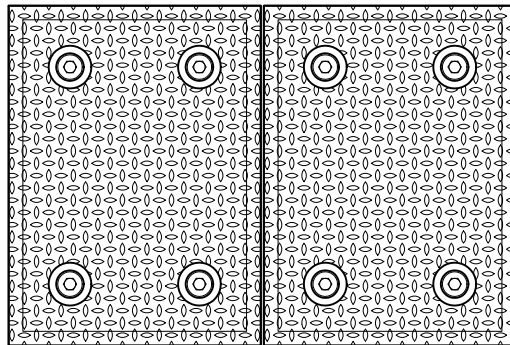
Customer Approval

Job Location

Job Name

Waide Division / Tyler Pipe Assumes No Responsibility For Superseded or Voided Data

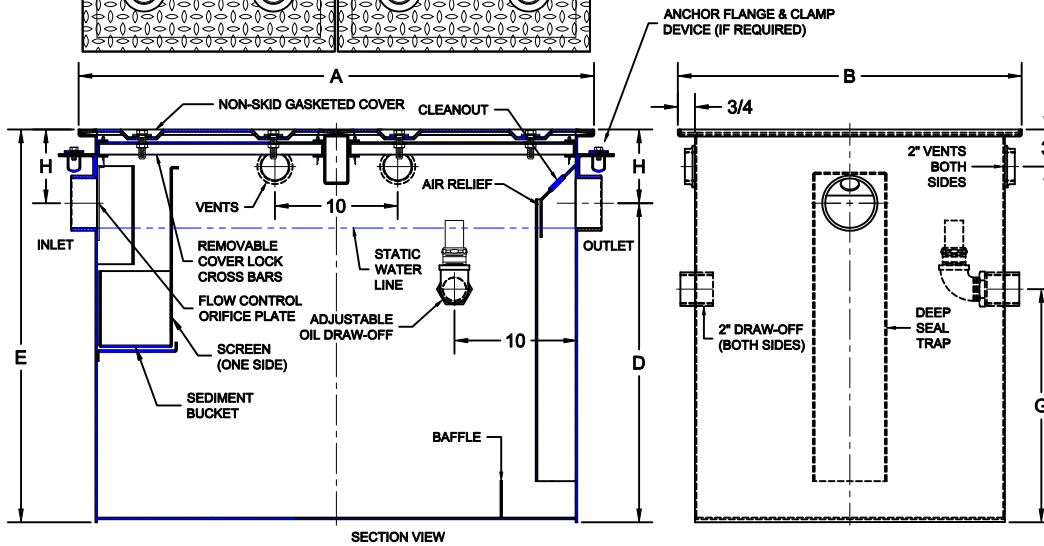
Dimensional Data (Inches/mm) are Subject to Manufacturers Tolerance and Change Without Notice.



INLET/OUTLET

Suffix Description

- NH NO-HUB
- IPS THREADED (FEMALE)



✓	MODEL NUMBER	PIPE SIZE	FLOW RATE (GPM)	CAPACITY		A	B	D	E	H	QTY OF LIDS	WT (LBS)
				(GAL)	(CU.FT.)							
	5400-010	2	10	10.1	1.3	21 1/4	15 3/4	9 1/2	13	3 1/2	1	183
	5400-015	2	15	14.0	1.9	23 3/4	15 3/4	11 1/2	15	3 1/2	1	232
	5400-020	3	20	16.7	2.2	23 3/4	15 3/4	14	17 1/2	3 1/2	1	263
	5400-025	3	25	56.4	7.5	28	22	26	32	6	1	712
	5400-035	3	35	76.2	10.2	34	24	26	32	6	1	911
	5400-050	3	50	82.4	11.0	34	24	28	34	6	1	973
	5400-075	4	75	168.1	22.4	48	34	28	36	8	2	1878
	5400-100	4	100	187.7	25.1	51	36	28	36	8	2	2062
	5400-125	4	125	195.4	26.1	53	36	28	36	8	2	2161
	5400-150	4	150	214.6	28.7	58	36	28	38	10	3	2371
	5400-200	4	200	308.9	41.3	68	38	32	42	10	4	3279
	5400-250	4	250	426.9	67.0	74	40	38	50	12	4	4628
	5400-300	6	300	525.7	70.2	78	44	40	52	12	4	5578
	5400-350	6	350	590.4	73.5	80	46	40	52	12	6	5878
	5400-400	6	400	622.0	83.1	82	48	42	54	12	6	6551
	5400-450	6	450	665.3	88.8	84	50	42	54	12	6	6958
	5400-500	6	500	782.7	104.5	86	52	46	58	12	6	8048

OPTIONS

Suffix	Description
<input type="checkbox"/> SS	ALL STAINLESS STEEL
<input type="checkbox"/> XT	EXTENSION (SPECIFY 'H')
<input type="checkbox"/> HD	REINFORCED HEAVY DUTY COVER
<input type="checkbox"/> T	COVER RECESSED FOR TILE
<input type="checkbox"/> U	COVER RECESSED FOR TERRAZZO
<input type="checkbox"/> SA	SACRIFICIAL ANODES

OPTIONS

Suffix	Description
<input type="checkbox"/> AC	ALUMINUM COVERS
<input type="checkbox"/> DW	DOUBLE WALL CONSTRUCTION
<input type="checkbox"/> 24	ANCHOR FLANGE
<input type="checkbox"/> 26	ANCHOR FLANGE / CLAMP DEVICE
<input type="checkbox"/> AP	HIGH LEVEL PROBE W/ ALARM

9-30-13

WADE • 11910 CR 492 • Tyler, TX 75706 • PH (903)882-5511 • FAX (888)879-9233
 WADE Canada • 6200 Rue Principale • Ste-Croix Quebec GOS 2H0 • PH (800)463-3480 Ext. 2227 • FAX (888)879-9233

A-54198

AutoCad.dwg