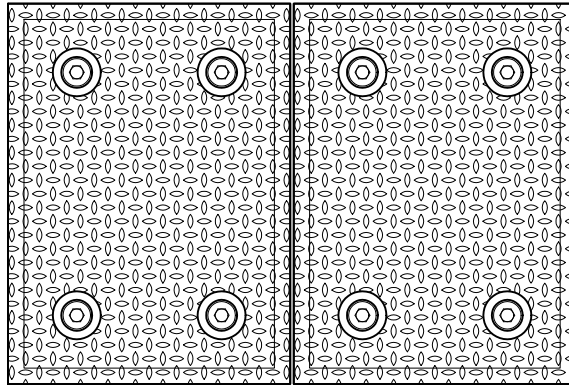


GREASE INTERCEPTOR



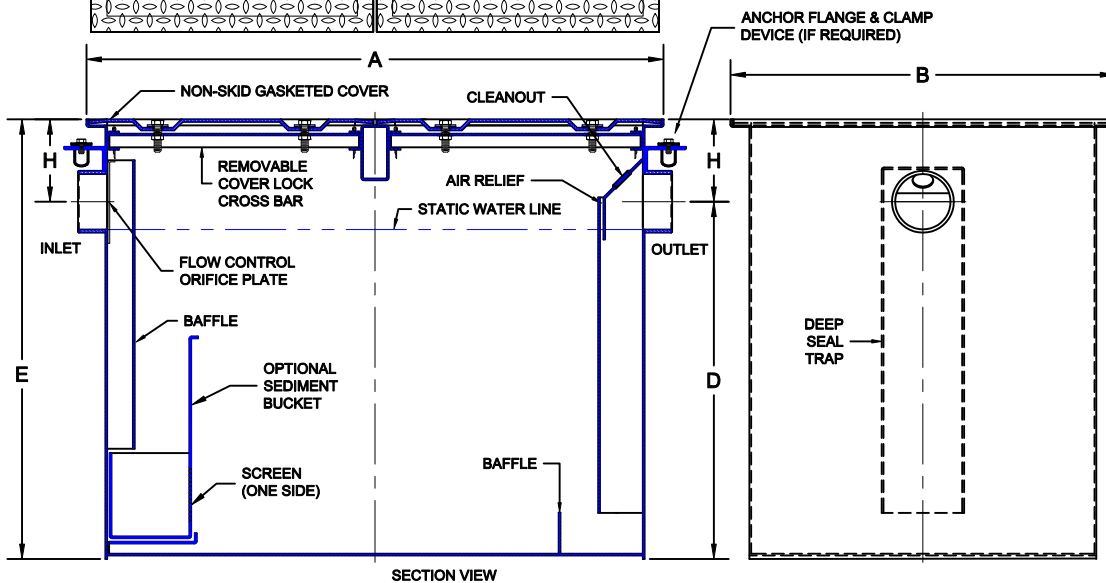
5200

FABRICATED STEEL GREASE INTERCEPTOR WITH GRAY EPOXY COATED FINISH INSIDE AND OUTSIDE, FIXED BAFFLES, INTERNAL FLOW CONTROL ORIFICE PLATE, GASKETED NON-SKID COVERS, RECESSED SECURING SCREWS, AIR RELIEF AND NO-HUB INLET/OUTLET.
 MATERIALS: BODY - 10 GA COVER - 7 GA TREAD PLATE



INLET/OUTLET

Suffix	Description
<input type="checkbox"/> NH	NO-HUB
<input type="checkbox"/> IPS	THREADED (FEMALE)



✓	MODEL NUMBER	PIPE SIZE	FLOW RATE (GPM)	CAPACITY (LBS)	CAPACITY (GAL)	A	B	D	E	H	QTY OF LIDS	WT (LBS)
	5200-075	4	75	150	106.0	42	28	26	32	6	2	350
	5200-100	4	100	200	192.7	55	37	26	34	8	2	520
	5200-125	4	125	250	226.9	58	38	28	36	8	3	600
	5200-150	4	150	300	264.6	61	39	30	38	8	3	700
	5200-200	4	200	400	395.6	70	44	34	44	10	6	1050
	5200-250	4	250	500	501.0	75	46	38	48	10	6	1160
	5200-300	4	300	600	579.7	77	49	40	52	12	6	1240
	5200-350	6	350	700	612.2	80	51	40	52	12	6	1360
	5200-400	6	400	800	805.1	84	56	44	58	14	8	1540
	5200-500	6	500	1000	1172.3	92	61	54	68	14	8	2150
	5200-600	8	600	1200	1807.8	102	74	62	76	14	9	3000
	5200-750	8	750	1500	1807.8	108	76	66	80	14	9	3280

OPTIONS

Suffix	Description
<input type="checkbox"/> SS	ALL STAINLESS STEEL
<input type="checkbox"/> XT	EXTENSION (SPECIFY 'H')
<input type="checkbox"/> HD	REINFORCED HEAVY DUTY COVER
<input type="checkbox"/> T	COVER RECESSED FOR TILE
<input type="checkbox"/> U	COVER RECESSED FOR TERRAZZO

OPTIONS

Suffix	Description
<input type="checkbox"/> AC	ALUMINUM COVERS
<input type="checkbox"/> DW	DOUBLE WALL CONSTRUCTION
<input type="checkbox"/> 24	ANCHOR FLANGE
<input type="checkbox"/> 26	ANCHOR FLANGE / CLAMP DEVICE
<input type="checkbox"/> 27	SEDIMENT BUCKET

AutoCad.dwg

9-30-13

WADE • 11910 CR 492 • Tyler, TX 75706 • PH (903)882-5511 • FAX (888)879-9233
 WADE Canada • 6200 Rue Principale • Ste-Croix Quebec GOS 2H0 • PH (800)463-3480 Ext. 2227 • FAX (888)879-9233

A-52348

Approval Date
 Customer Approval
 Job Location
 Job Name
 Dimensional Data (inches/mm) are Subject to Manufacturers Tolerance and Change Without Notice. Wade Division / Tyler Pipe Assumes No Responsibility For Superseded or Voided Data