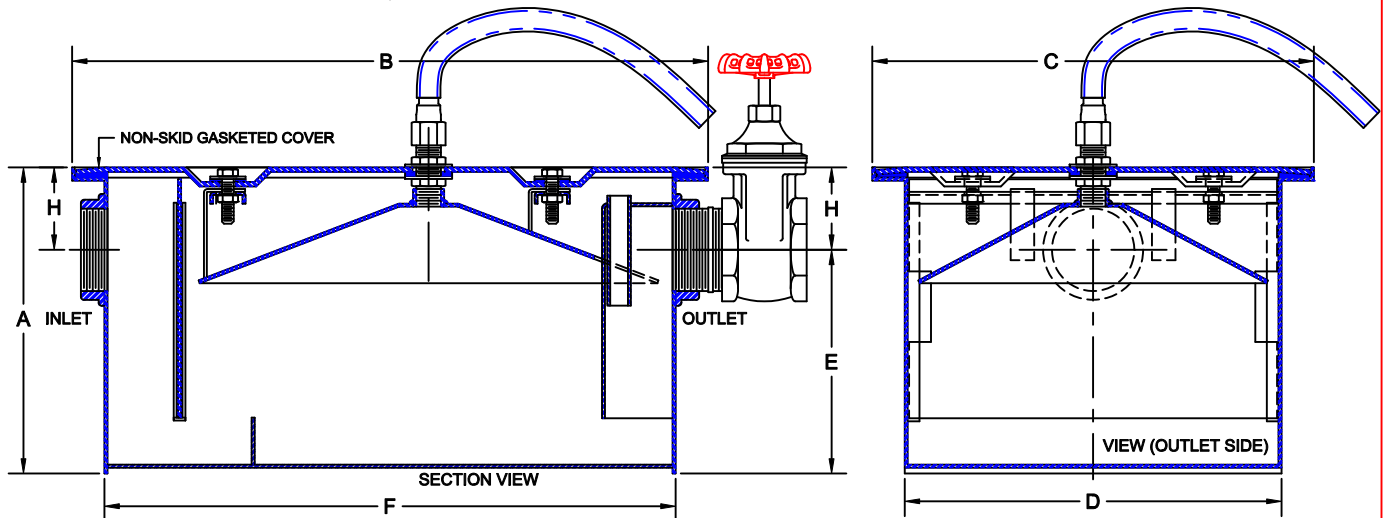
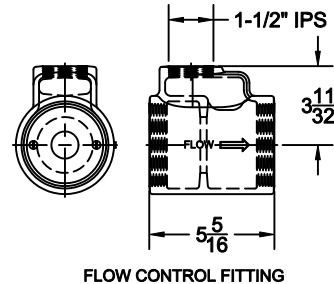
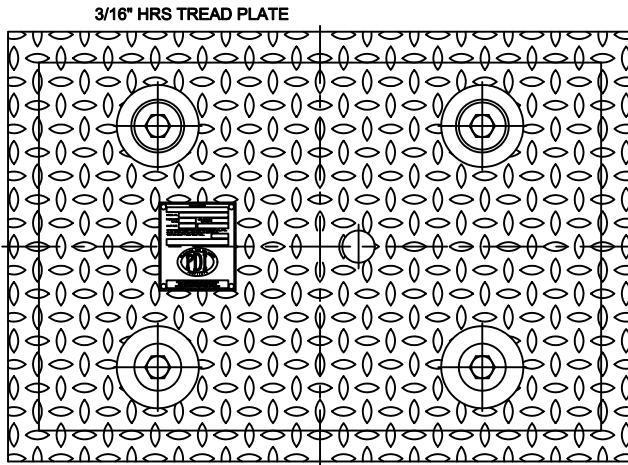


GREASE INTERCEPTOR



5100-JCX-IPS

FABRICATED STEEL GREASE INTERCEPTOR WITH GRAY POWDER COATED FINISH INSIDE AND OUTSIDE, REMOVABLE BAFFLE, EXTERNAL FLOW CONTROL FITTING, GASKETED NON-SKID COVER, RECESSED SECURING SCREWS, AIR RELIEF, DRAW-OFF HOOD, HOSE, VALVE AND THREADED INLET/OUTLET.
 MATERIALS: BODY - 12 GA COVER - 7 GA TREAD PLATE TESTED & CERTIFIED TO PDI G-101



✓	MODEL NUMBER	PIPE SIZE	FLOW RATE (GPM)	GREASE (LBS)	LIQUID CAPACITY	A	B	C	D	E	F	H
	5110-JCX	2	10	20	7.3 GAL	13 1/4	20 1/8	14 3/4	12 3/8	9 3/4	17 3/8	3 1/2
	5115-JCX	2	15	30	11.0 GAL	13 1/4	25	17	16 1/4	9 1/4	22 1/4	4
	5120-JCX	3	20	40	12.6 GAL	13 1/4	27	18 3/4	16	9 3/4	24 1/4	3 1/2
	5125-JCX	3	25	50	19.8 GAL	18 1/2	26	20	17 1/4	14	23 1/4	4 1/2
	5135-JCX	4	35	70	28.6 GAL	22 1/2	28 3/4	20	17 1/4	18	25 3/4	4 1/2
	5150-JCX	4	50	100	37.4 GAL	22 1/2	30	24	21 1/4	18	27 1/4	4 1/2

NOTE: 5110-5115 (ONE COVER LOCK) 5120-5150 (FOUR COVER LOCKS)
 OPTIONS

Suffix	Description
SS	ALL STAINLESS STEEL
27	SEDIMENT BASKET

AutoCad.dwg

Approval Date _____
 Customer Approval _____
 Job Location _____
 Job Name _____
 Dimensional Data (Inches/mm) are Subject to Manufacturers Tolerance and Change Without Notice.

Wade Division / Tyler Pipe Assumes No Responsibility For Superseded or Voided Data