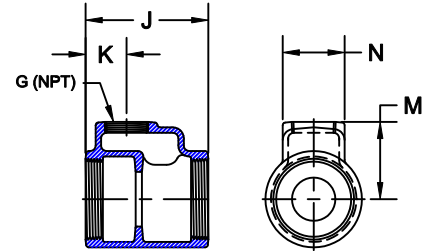
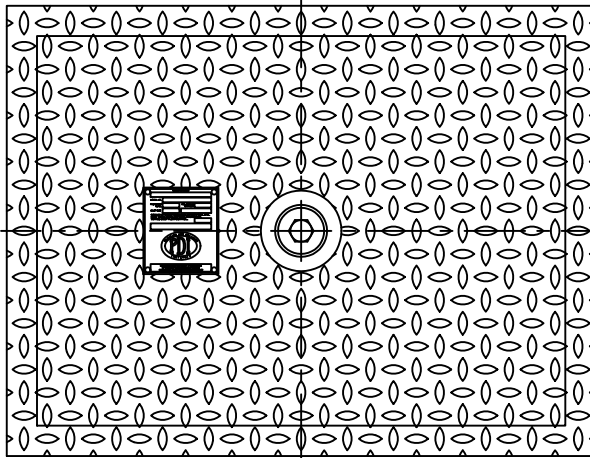


GREASE INTERCEPTOR

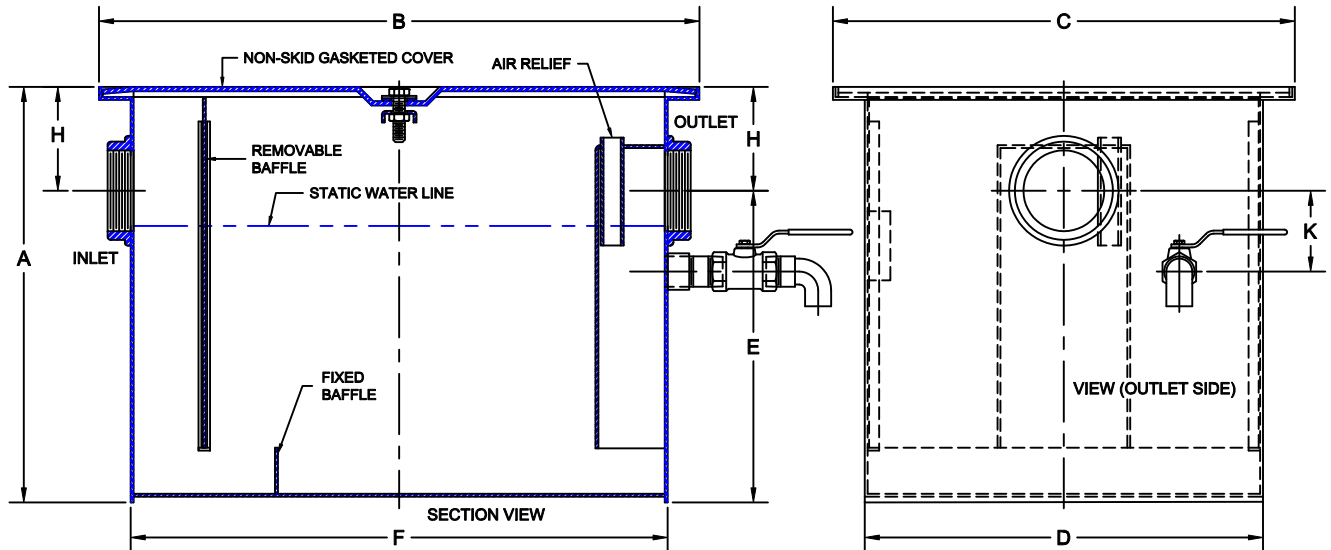


5100-GT-IPS

FABRICATED STEEL GREASE INTERCEPTOR WITH GRAY POWDER COATED FINISH INSIDE AND OUTSIDE, REMOVABLE BAFFLE, EXTERNAL FLOW CONTROL FITTING, GASKETED NON-SKID COVER, RECESSED SECURING SCREWS, AIR RELIEF, GREASE DRAW-OFF VALVE AND THREADED INLET/OUTLET.
 MATERIALS: BODY - 12 GA COVER - 7 GA TREAD PLATE TESTED & CERTIFIED TO PDI G-101



PIPE SIZE	J	K	M	N	G
2	4	1 1/2	2 5/8	2 3/8	1 1/4
3	5 1/4	1 3/4	3 5/16	2 11/16	1 1/2
4	6 7/8	2 3/8	4 5/16	3 1/2	2



✓	MODEL NUMBER	PIPE SIZE	FLOW RATE (GPM)	GREASE (LBS)	LIQUID CAPACITY	A	B	C	D	E	F	H	K
	5104-GT	2	4	8	3.7 GAL	10 1/2	18	13	10 1/4	7	15 1/4	3 1/2	2 1/4
	5107-GT	2	7	14	5.4 GAL	12 1/8	18 3/16	13	10 1/4	8 5/8	15 1/4	3 1/2	2 1/2
	5110-GT	2	10	20	7.3 GAL	13 1/4	20 1/8	14 3/4	12 3/8	9 3/4	17 3/8	3 1/2	2 1/2
	5115-GT	2	15	30	11.0 GAL	13 1/4	25	17	16 1/4	9 1/4	22 1/4	4	2 1/2
	5120-GT	3	20	40	12.6 GAL	13 1/4	27	18 3/4	16	9 3/4	24 1/4	3 1/2	2 1/2
	5125-GT	3	25	50	19.8 GAL	18 1/2	26	20	17 1/4	14	23 1/4	4 1/2	3
	5135-GT	4	35	70	28.6 GAL	22 1/2	28 3/4	20	17 1/4	18	25 3/4	4 1/2	3
	5150-GT	4	50	100	37.4 GAL	22 1/2	30	24	21 1/4	18	27 1/4	4 1/2	3

NOTE: 5104-5115 (ONE COVER LOCK) 5120-5150 (FOUR COVER LOCKS)

OPTIONS

Suffix	Description
SS	ALL STAINLESS STEEL
27	SEDIMENT BUCKET

9-18-13

WADE • 11910 CR 492 • Tyler, TX 75706 • PH (903)882-5511 • FAX (888)879-9233
 WADE Canada • 6200 Rue Principale • Ste-Croix Quebec GOS 2H0 • PH (800)463-3480 Ext. 2227 • FAX (888)879-9233

A-51558

AutoCad.dwg

Approval Date _____
 Customer Approval _____
 Job Location _____
 Job Name _____
 Dimensional Data (Inches/mm) are Subject to Manufacturers Tolerance and Change Without Notice.

Waide Division / Tyler Pipe Assumes No Responsibility For Superseded or Voided Data