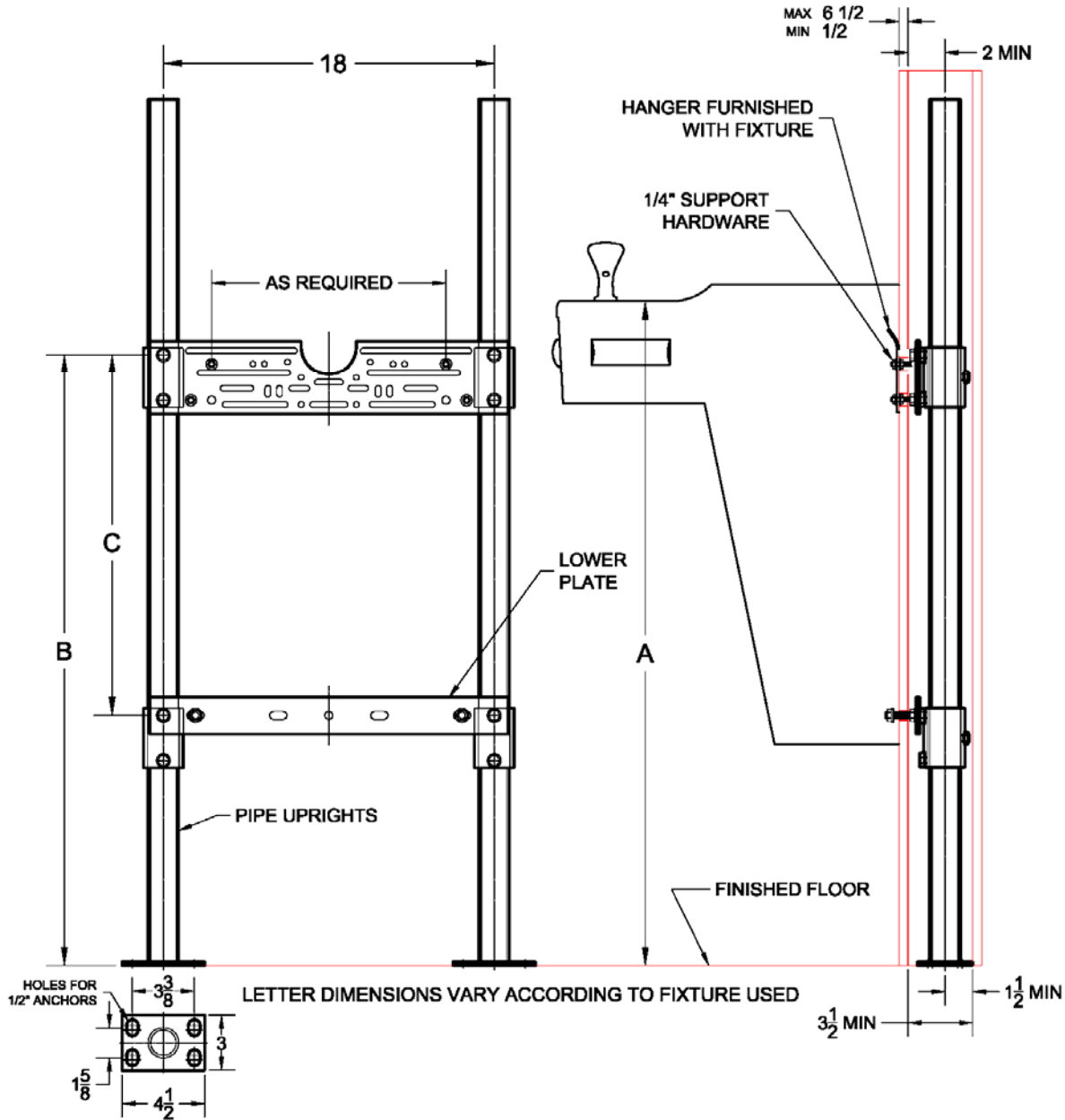


## 403 Plate Type Drinking Fountain / Water Cooler Carrier

Regularly Furnished: Painted cast iron header couplings, round tubular steel uprights, heavy gauge top and bottom support plates, zinc plated support hardware and welded base feet.

ASME Type I Water Cooler Carrier Load Rating = 200 Lb.



✓	Model	Configuration
	403	Single

Options		
✓	Suffix	Description
	-BL	Bi-Level Fountain / Cooler Support
	-D	Back to Back Fixture Support
	-LBP	Less Lower Support Plate
	-M3	Vandal Proof Hardware
	-M4	Longer Hardware (Specify Wall Thickness)
	-M18	Extra Long Uprights (Specify Height)
	-M36	Rectangular Steel Uprights