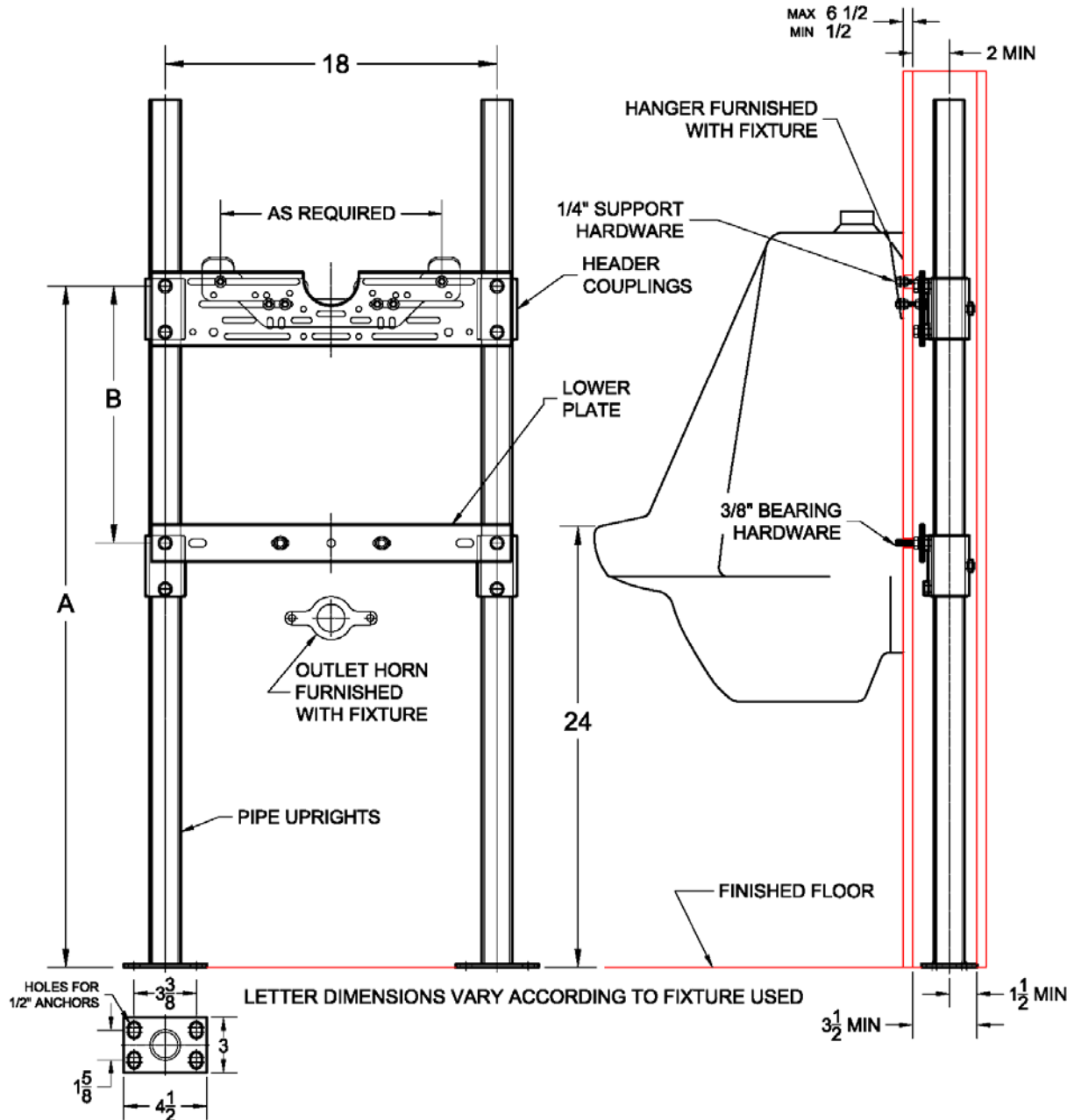


## 402 Plate Type Wall Urinal Carrier

Regularly Furnished: Painted cast iron header couplings, round tubular steel uprights, heavy gauge top and bottom support plates, zinc plated support hardware and welded base feet.

ASME Type II Urinal Carrier Load Rating = 200 Lb.



✓	Model	Configuration
	402	Single

Options		
✓	Suffix	Description
	-AM1	Flush Valve Support
	-D	Back to Back Fixture Support
	-M3	Vandal Proof Hardware
	-M4	Longer Hardware (Specify Wall Thickness)
	-M18	Extra Long Uprights (Specify Height)
	-M36	Rectangular Steel Uprights