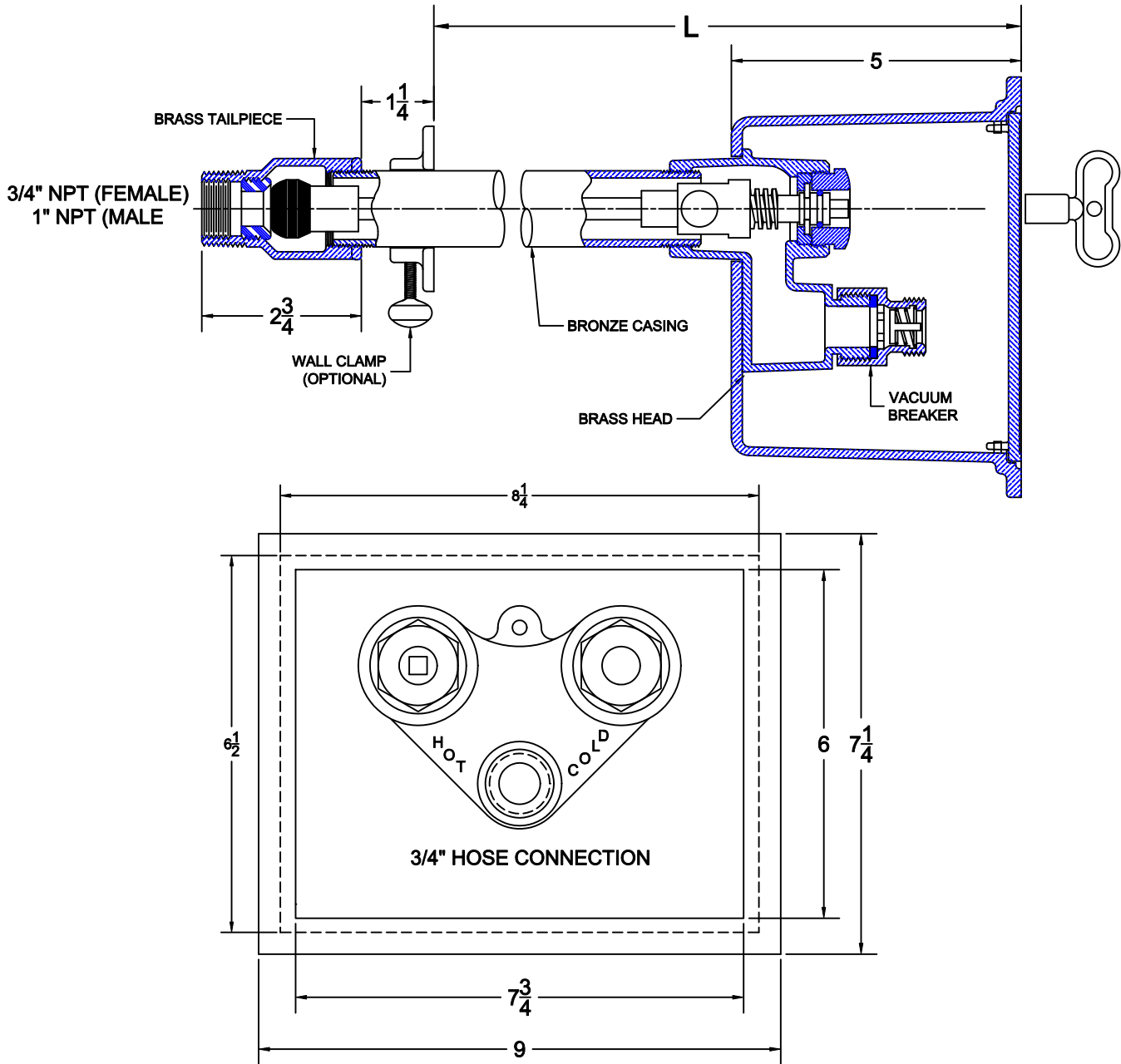


WALL HYDRANT



8606-HC-89

NON-FREEZE WALL HYDRANT W/ 3/4" NPT INLET, BRONZE CASING, NICKEL BRONZE BOX W/ HINGED LID
HOT & COLD VALVES, VACUUM BREAKER, NYLON SEAT, NEOPRENE PLUNGER AND 3/4" HOSE CONNECTION.



CATALOG NUMBER	WALL "L" DIMENSION	WEIGHT (LBS)	Suffix	Description
<input type="checkbox"/> 8606-HC-L4-89	4"	17.0		
<input type="checkbox"/> 8606-HC-L6-89	6"	16.0	<input type="checkbox"/> 87	WALL CLAMP
<input type="checkbox"/> 8606-HC-L8-89	8"	18.0	<input type="checkbox"/> 88	COPPER SWEAT CONNECTION
<input type="checkbox"/> 8606-HC-L10-89	10"	20.0	<input type="checkbox"/> 89	VACUUM BREAKER W/ 5" DEEP BOX
<input type="checkbox"/> 8606-HC-L12-89	12"	22.0	<input type="checkbox"/> 91	UNION ELBOW ASSEMBLY
<input type="checkbox"/> 8606-HC-L14-89	14"	24.0		

AutoCad.dwg