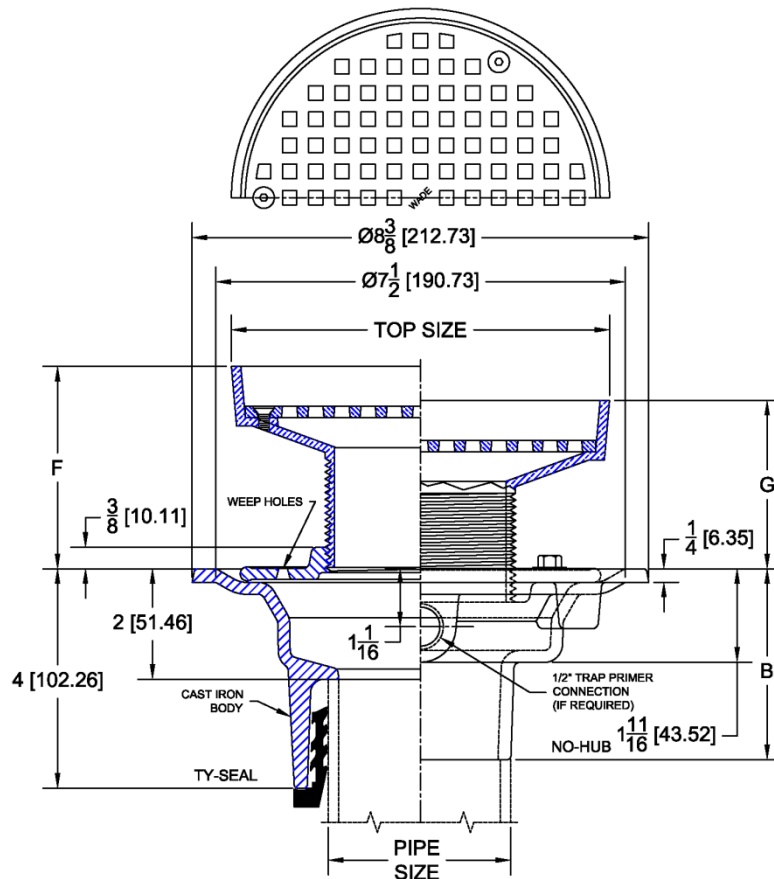


## 1100-ER Floor Drain with Round Adjustable Top – Extended Rim

Regularly Furnished: Painted cast iron floor drain body with anchor flange, seepage openings, reversible clamping collar, adjustable top, secured perforated grate, 1/2" NPT trap primer tap (plugged) and bottom outlet.  
ASME Load Rating = L.D. (Light Duty) Under 2,000 Lbs.



OUTLET	NO-HUB	INSIDE CAULK	THREADED
B	3 1/2	4 1/4	2 3/4

✓	Top Size & Type	Outlet Size In.	Grate Free Area (Sq.In.)
	ER5	2,3,4,6	5.8
	ER7	2,3,4,6	10.6
	ER9	2,3,4,6	10.6

Top Size	F		G	
	Min	Max	Min	Max
5 (127)	2 (51)	3-7/16 (87)	2 (51)	3 (76)
7 (178)	2-1/16 (52)	3-5/8 (92)	2-1/16 (52)	3-1/4 (83)
9 (229)	2-3/8 (60)	3-3/4 (95)	2-3/16 (56)	3-3/8 (56)

Top Material		
✓	Suffix	Description
	-1	Satin Finish Nickel Bronze
	-2	Satin Finish Bronze
	-102	Polished Chrome Plated

Outlet Variations		
✓	Type	Designation
	No-Hub	2NH, 3NH, 4NH, 6NH
	Push-On	2TY, 3TY, 4TY
	Inside Caulk	2IC, 3IC, 4IC
	Threaded	2IPS, 3IPS, 4IPS

Options		
✓	Suffix	Description
	-ARC	Acid Resistant Coating (C.I. Parts)
	-DC	Debris Cover
	-DIA	Deck Installation Assembly
	-SO	90° Side Outlet (No-Hub Only)
	-TSD	Trap Seal Device (Model 4405)
	-27	Sediment Bucket
	-31	Backwater Valve
	-33	Closure Plug
	-39	Galvanized Iron Parts
	-83	Special Engraving
	-94	Extension Adapter