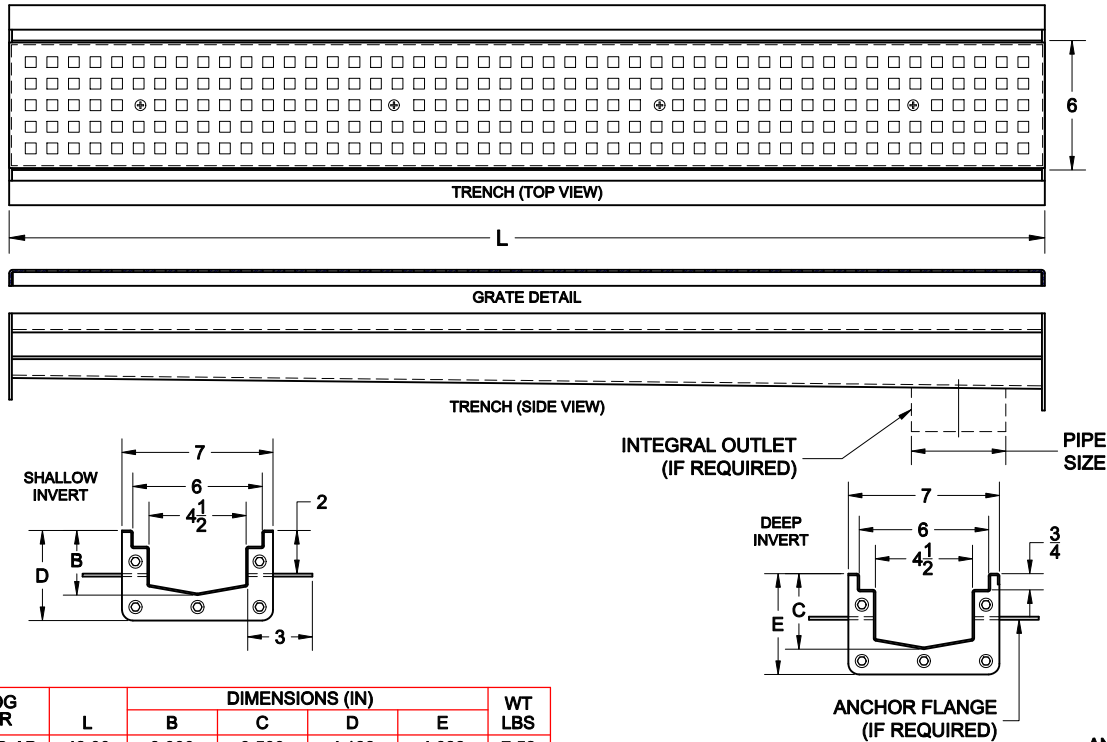


STAINLESS STEEL TRENCH



2930-SS-SB

STAINLESS STEEL SLOPED BOTTOM TRENCH DRAIN WITH 14GA BODY, 12GA SQUARE HOLE PERFORATED GRATE, GASKET AND FLANGED CONNECTIONS.



✓	CATALOG NUMBER	L	DIMENSIONS (IN)				WT LBS
			B	C	D	E	
	2930-SS-SB-AB	48.00	3.000	3.500	4.188	4.688	7.52
	2930-SS-SB-BC	48.00	3.500	4.000	4.688	5.188	7.92
	2930-SS-SB-CC	48.00	4.000	4.000	5.188	5.188	7.92
	2930-SS-SB-CD	48.00	4.000	4.500	5.188	5.688	8.27
	2930-SS-SB-DE	48.00	4.500	5.000	5.688	6.188	8.64
	2930-SS-EE	48.00	5.000	5.000	6.188	6.188	8.64
	2930-SS-SB-EF	48.00	5.000	5.500	6.188	6.688	8.99
	2930-SS-SB-FG	48.00	5.500	6.000	6.688	7.188	9.37
	2930-SS-GG	48.00	6.000	6.000	7.188	7.188	9.37
	2930-SS-SB-GH	48.00	6.000	6.500	7.188	7.688	9.74
	2930-SS-SB-HI	48.00	6.500	7.000	7.688	8.188	10.11
	2930-SS-II	48.00	7.000	7.000	8.188	8.188	10.11
	2930-SS-SB-IJ	48.00	7.000	7.500	8.188	8.688	10.48
	2930-SS-SB-JK	48.00	7.500	8.000	8.688	9.188	10.85
	2930-SS-KK	48.00	8.000	8.000	9.188	9.188	10.85
	2930-SS-SB-KL	48.00	8.000	8.500	9.188	9.688	11.22
	2930-SS-SB-LM	48.00	8.500	9.000	9.688	10.188	11.59
	2930-SS-MM	48.00	9.000	9.000	10.188	10.188	11.59
	2930-SS-SB-MN	48.00	9.000	9.500	10.188	10.688	11.96
	2930-SS-SB-NO	48.00	9.500	10.000	10.688	11.188	12.33
	2930-SS-OO	48.00	10.000	10.000	11.188	11.188	12.33
	2930-SS-SB-OP	48.00	10.000	10.500	11.188	11.688	12.70
	2930-SS-SB-PQ	48.00	10.500	11.000	11.688	12.188	13.07
	2930-SS-QQ	48.00	11.000	11.000	12.188	12.188	13.07
	2930-SS-SB-QR	48.00	11.000	11.500	12.188	12.688	13.44
	2930-SS-SB-RS	48.00	11.500	12.000	12.688	13.188	13.81
	2930-SS-SS	48.00	12.000	12.000	13.188	13.188	13.81
	2930-SS-SB-ST	48.00	12.000	12.500	13.188	13.688	14.18
	2930-SS-SB-TU	48.00	12.500	13.000	13.688	14.188	14.55
	2930-SS-UU	48.00	13.000	13.000	14.188	14.188	14.55
	2930-SS-SB-UV	48.00	13.000	13.500	14.188	14.688	14.92
	2930-SS-SB-VW	48.00	13.500	14.000	14.688	15.188	15.29
	2930-SS-WW	48.00	14.000	14.000	15.188	15.188	15.29
	2930-SS-SB-WX	48.00	14.000	14.500	15.188	15.688	15.66
	2930-SS-SB-XY	48.00	14.500	15.000	15.688	16.188	16.03
	2930-SS-YY	48.00	15.000	15.000	16.188	16.688	16.40
	2930-SS-SB-YZ	48.00	15.500	16.000	16.688	17.188	16.77
	2930-SS-SB-ZZ	24.00	16.000	16.500	17.188	17.688	17.16

- STAINLESS STEEL GRATES**
- | | | DIN | ANSI |
|--------------------------|-----|---------------------------------------|------------|
| <input type="checkbox"/> | ADA | ADA WIRE BAR GRATE..... | Class B MD |
| <input type="checkbox"/> | DDS | DECORATIVE DIAGONAL PATTERN GRATE.... | Class C HD |
| <input type="checkbox"/> | SBS | CAST BAR GRATE..... | Class E SD |
| <input type="checkbox"/> | SCS | DECORATIVE CIRCULAR PATTERN GRATE.... | Class C HD |
| <input type="checkbox"/> | SDS | FABRICATED SLOTTED GRATE..... | Class A LD |
| <input type="checkbox"/> | SFS | FAB. SLOTTED REINFORCED GRATE..... | Class B MD |
| <input type="checkbox"/> | SPS | FAB. PERFORATED GRATE..... | Class A LD |
| <input type="checkbox"/> | SRS | FAB. PERFORATED REINFORCED GRATE..... | Class B MD |
| <input type="checkbox"/> | SSS | CAST ADA SLOTTED GRATE..... | Class A LD |
| <input type="checkbox"/> | SZS | DECORATIVE SQUARE PATTERN GRATE..... | Class B MD |
- Suffix Description**
- | | | |
|--------------------------|-----|-------------------------------|
| <input type="checkbox"/> | EP | END PLATE |
| <input type="checkbox"/> | 2SP | END PLATE W/ 3" SIDE OUTLET |
| <input type="checkbox"/> | 3SP | END PLATE W/ 4" SIDE OUTLET |
| <input type="checkbox"/> | 4SP | ENDPLATE W/ 6" SIDE OUTLET |
| <input type="checkbox"/> | 3N | 3" NH BOTTOM OUTLET |
| <input type="checkbox"/> | 4N | 4" NH BOTTOM OUTLET |
| <input type="checkbox"/> | 6N | 6" NH BOTTOM OUTLET |
| <input type="checkbox"/> | 24 | ANCHOR FLANGE |
| <input type="checkbox"/> | 26 | ANCHOR FLANGE W/ CLAMP DEVICE |

AutoCad.dwg