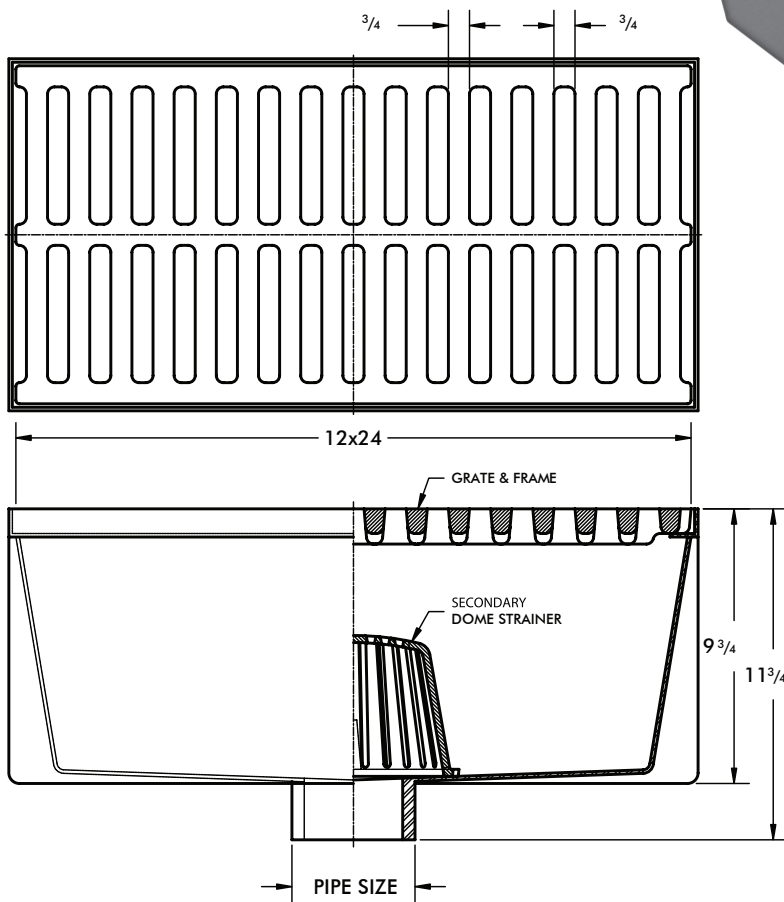
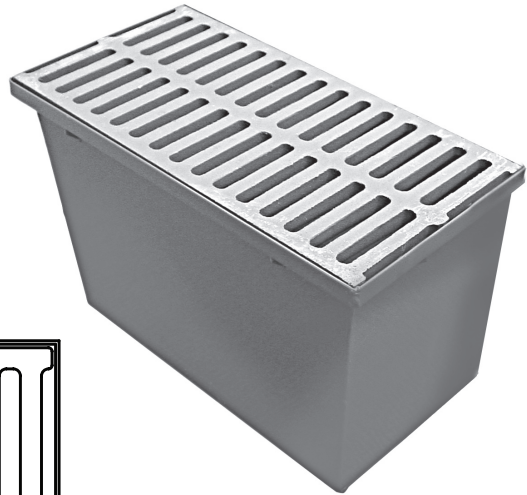


Roadway Drain

WADE

1890-R Painted roadway drain with heavy duty fabricated steel body, ductile iron loose set grate, cast iron high dome secondary strainer and no hub bottom outlet.

ANSI Load Class SD - Special Duty (Over 10,000 Lbs.) Grate Free Area - 110.0 Sq.In.



OPTIONS

Suffix	Description
1.....	Nickel Bronze Veneer Top
5.....	Vandal Proof (Secured Grate)
31.....	Backwater Valve (3" or 4" Only)
39.....	Galvanized Parts
64.....	A.R.E Powdered Epoxy Coating.

Cat. No.	Pipe Size	Wt. Lbs.
1893-R	3	114.0
1894-R	4	114.0
1896-R	6	115.0