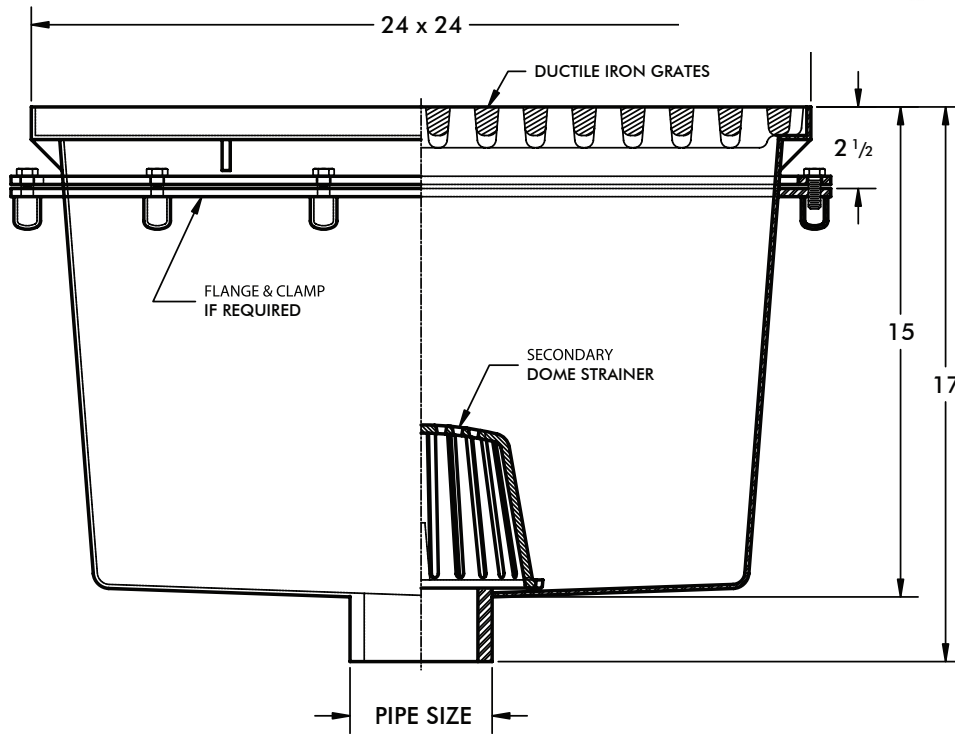
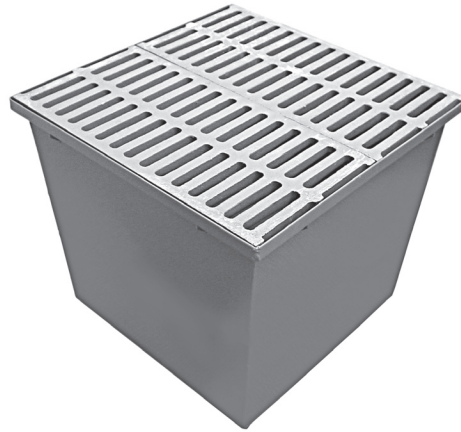


Large Floor Drain

WADE

1890 Painted floor drain with heavy duty fabricated steel deep sump body, ductile iron loose set slotted grates, cast iron high dome secondary strainer and no hub bottom outlet.
ANSI load class SD - Special Duty (Over 10,000 Lbs.) Grate Free Area - 220.0 Sq.In.



OPTIONS

Suffix	Description
1.....	Nickel Bronze Veneer Top
5.....	Vandal Proof (Secured Grates)
24.....	Anchor Flange
26.....	Anchor Flange w/ Clamp Device
31.....	Backwater Valve (3" or 4" Only)
39.....	Galvanized Parts
64.....	A.R.E Powdered Epoxy Coating.

Cat. No.	Pipe Size	Wt. Lbs.
1893	3	114.0
1894	4	114.0
1896	6	115.0