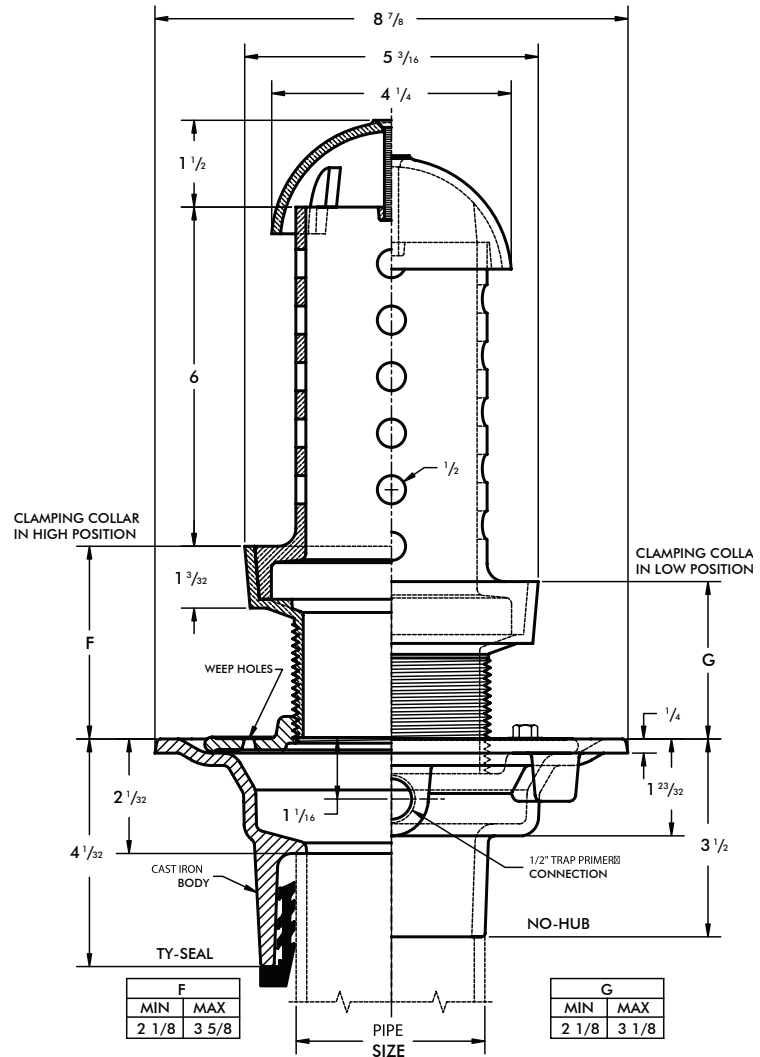
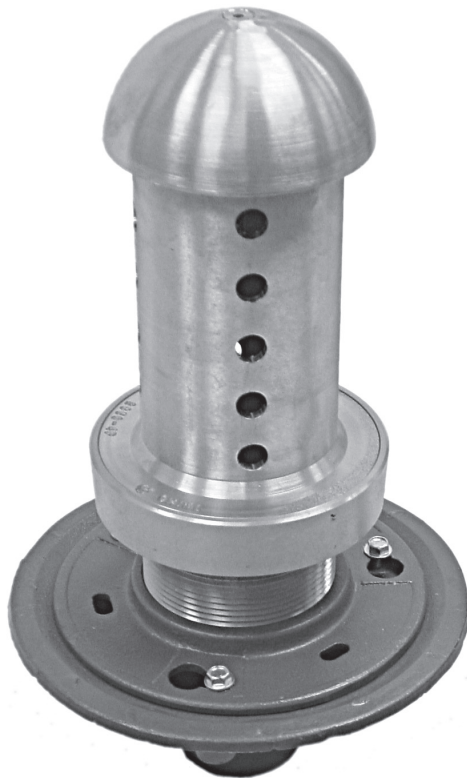


Planting Area Drain

WADE

1860-PA Cast iron planting area drain with flange, integral reversible clamping collar, seepage openings, 1/2" plugged trap primer tap, adjustable shank and satin finish nickel bronze perforated standpipe with secured dome.



F	
MIN	MAX
2 1/8	3 5/8

G	
MIN	MAX
2 1/8	3 1/8

Cat. No.	Pipe Size	Wt. Lbs.
<input type="checkbox"/> 1862-PA	2	23.0
<input type="checkbox"/> 1863-PA	3	24.0
<input type="checkbox"/> 1864-PA	4	22.0

OUTLETS

- NH..... No-Hub
- TY Ty-Seal

OPTIONS

Suffix	Description
<input type="checkbox"/> 31.....	Backwater Valve
<input type="checkbox"/> 39.....	Galvanized Iron Parts
<input type="checkbox"/> 56.....	Standpipe Over 6" (Per/In)
<input type="checkbox"/> 94.....	Extension Adaptor
<input type="checkbox"/> 179.....	Security Screw