

URINAL CARRIER



Approval Date

Customer Approval

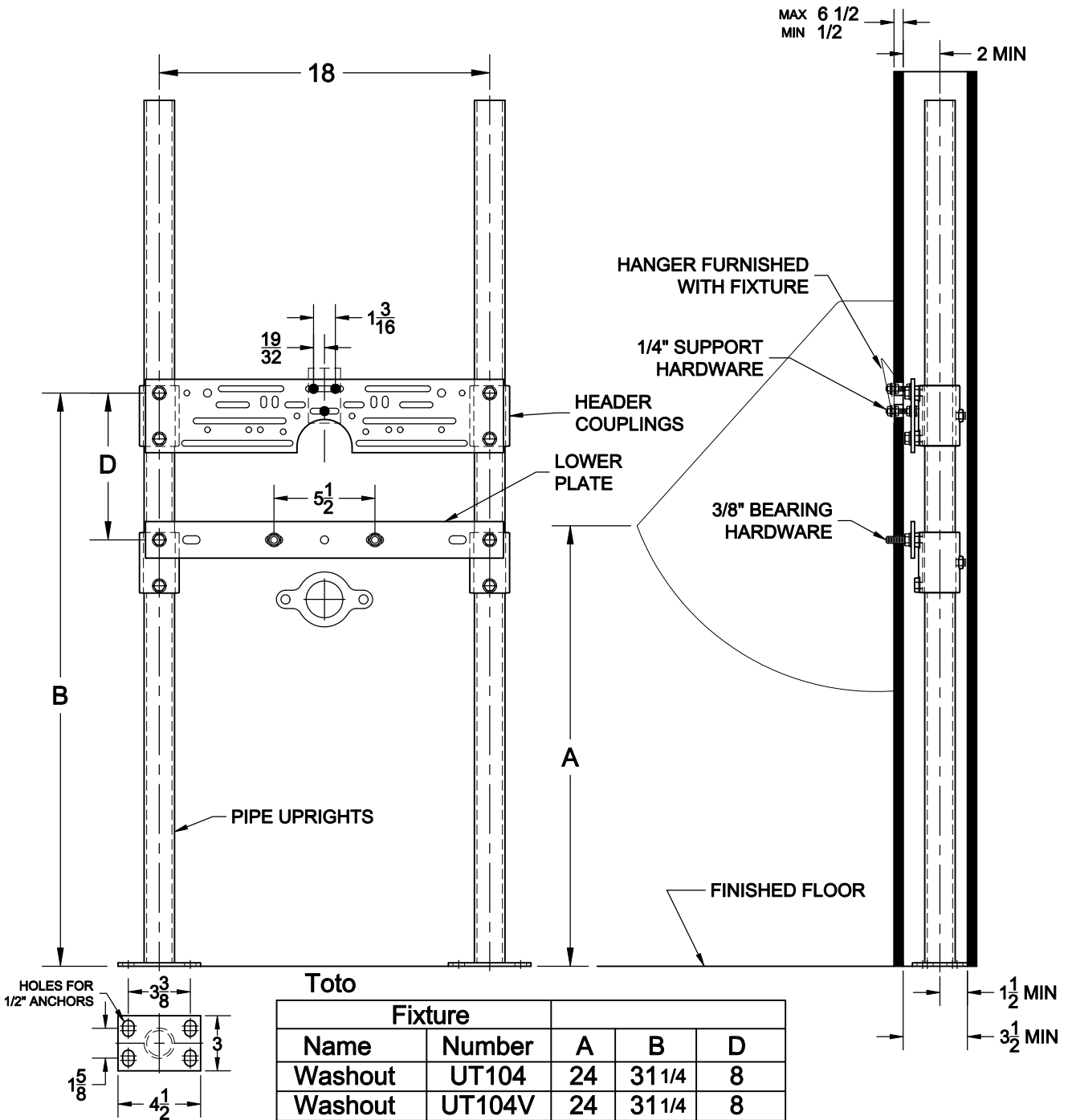
Job Location

Job Name

Dimensional Data (Inches/mm) are Subject to Manufacturers Tolerance and Change Without Notice. Wade Division / Tyler Pipe Assumes No Responsibility For Superseded or Voided Data

400-AM11

UNIVERSAL HANGER PLATE CARRIER WITH SCH.40 PIPE UPRIGHTS, WELDED BASE FEET AND SUPPORT HARDWARE



OPTIONS

Suffix	Description
□ M36	RECTANGULAR STEEL UPRIGHTS

AutoCad.dwg