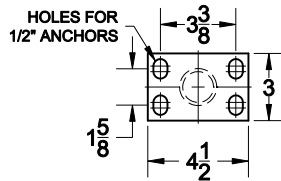
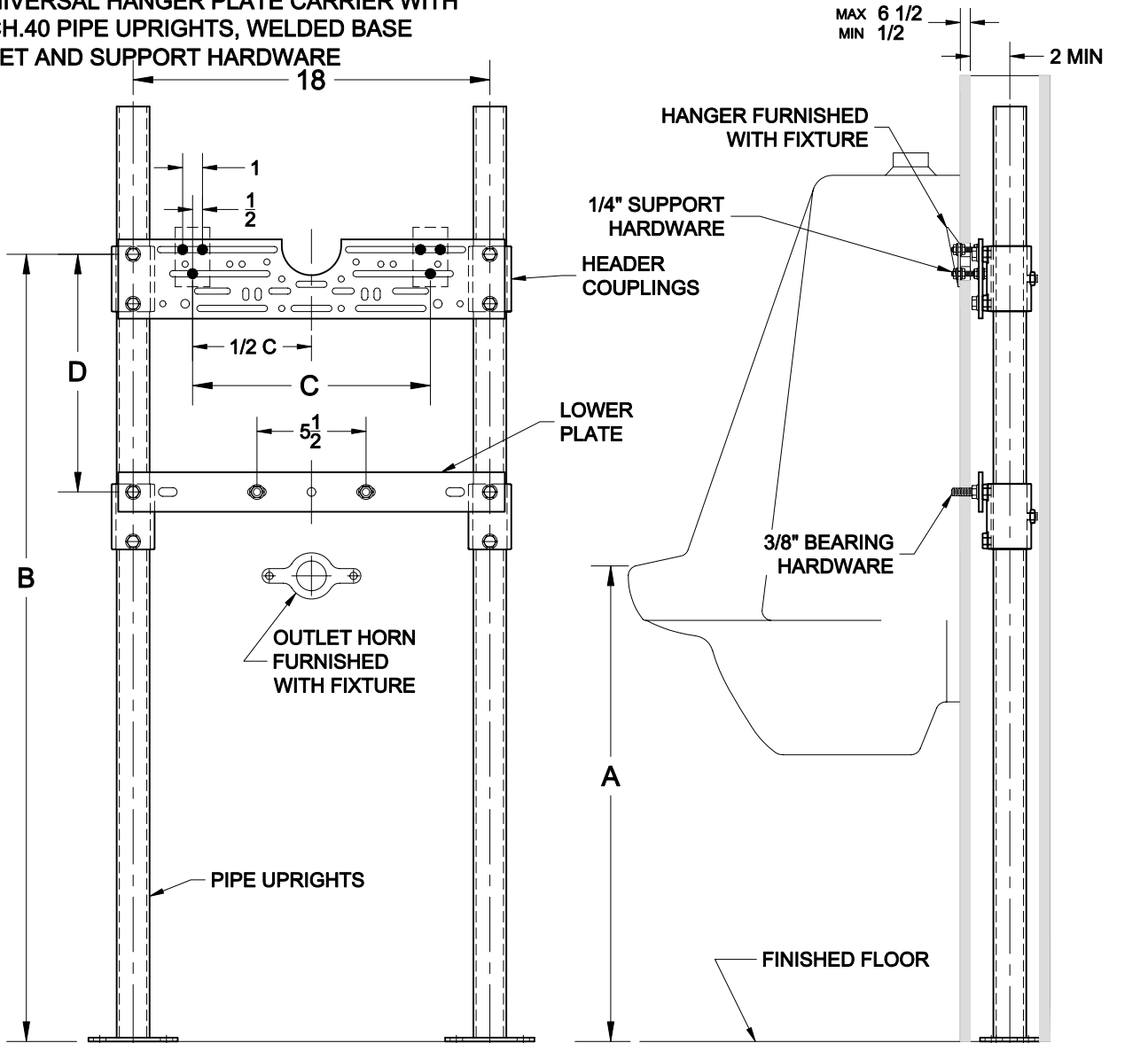


URINAL CARRIER



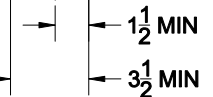
400-AM11

UNIVERSAL HANGER PLATE CARRIER WITH
SCH.40 PIPE UPRIGHTS, WELDED BASE
FEET AND SUPPORT HARDWARE



Kohler

FIXTURE		A	B	C	D
Name	Number				
Bardon Touchless	K-4915	24	40 1/4	12	15
Bardon Superior	K-4960-ET	24	40 1/4	12	15
Bardon Superior	K-4960-ER	24	40 1/4	12	15
Stanwell	K-4972-T	24	39 7/8	12	14
Stanwell	K-4972-R	24	39 1/8	12	14
Freshman	K-4989-T	24	35 1/4	10	14
Freshman	K-4989-R	24	35 1/4	10	14
Dexter	K-5016-ET	24	31 3/4	6 1/2	10
Dexter	K-5016-ER	24	31 3/4	6 1/2	10



OPTIONS

Suffix Description

M36 RECTANGULAR STEEL UPRIGHTS

AutoCad.dwg

Approval Date
Customer Approval
Job Location
Job Name

Wade Division / Tyler Pipe Assumes No Responsibility For Superseded or Voided Data
Dimensional Data (Inches/mm) are Subject to Manufacturers Tolerance and Change Without Notice.