

WASH SINK CARRIER



Approval Date

Customer Approval

Job Location

Job Name

Dimensional Data (Inches/mm) are Subject to Manufacturers Tolerance and Change Without Notice. Wade Division / Tyler Pipe Assumes No Responsibility For Superseded or Voided Data

620-009

HANGER PLATE CARRIER WITH PIPE UPRIGHTS, WELDED BASE FEET, A.R.E. EXPOSED ARMS, AND SUPPORT HARDWARE.

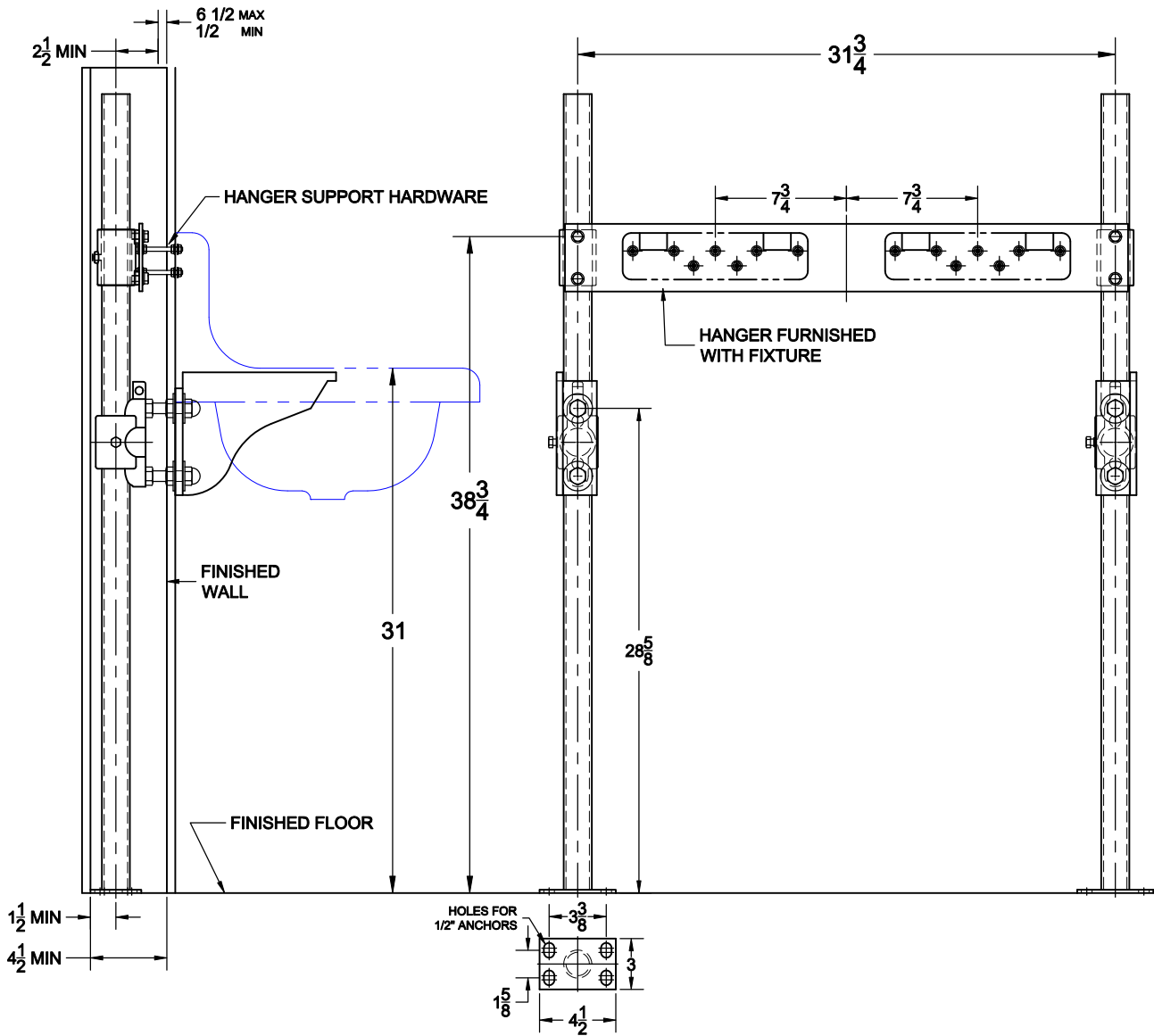
FIXTURE

Manufacturer Kohler

Name Brockway

No. K-3200

Style Lavatory



OPTIONS

Cat. No.	Type	Wt. Lbs.	Suffix	Description
<input type="checkbox"/> 620-009	SGL	59.0	<input type="checkbox"/> M36	SQUARE UPRIGHTS

NOTE: CONTRACTOR MUST VERIFY DIMENSIONS WITH FIXTURE MANUFACTURER ROUGH-IN DATA
TYLER PIPE / WADE DIVISION ACCEPTS NO RESPONSIBILITY FOR ANY INACCURACIES IN DRAWING

AutoCad.dwg