

SINK CARRIER



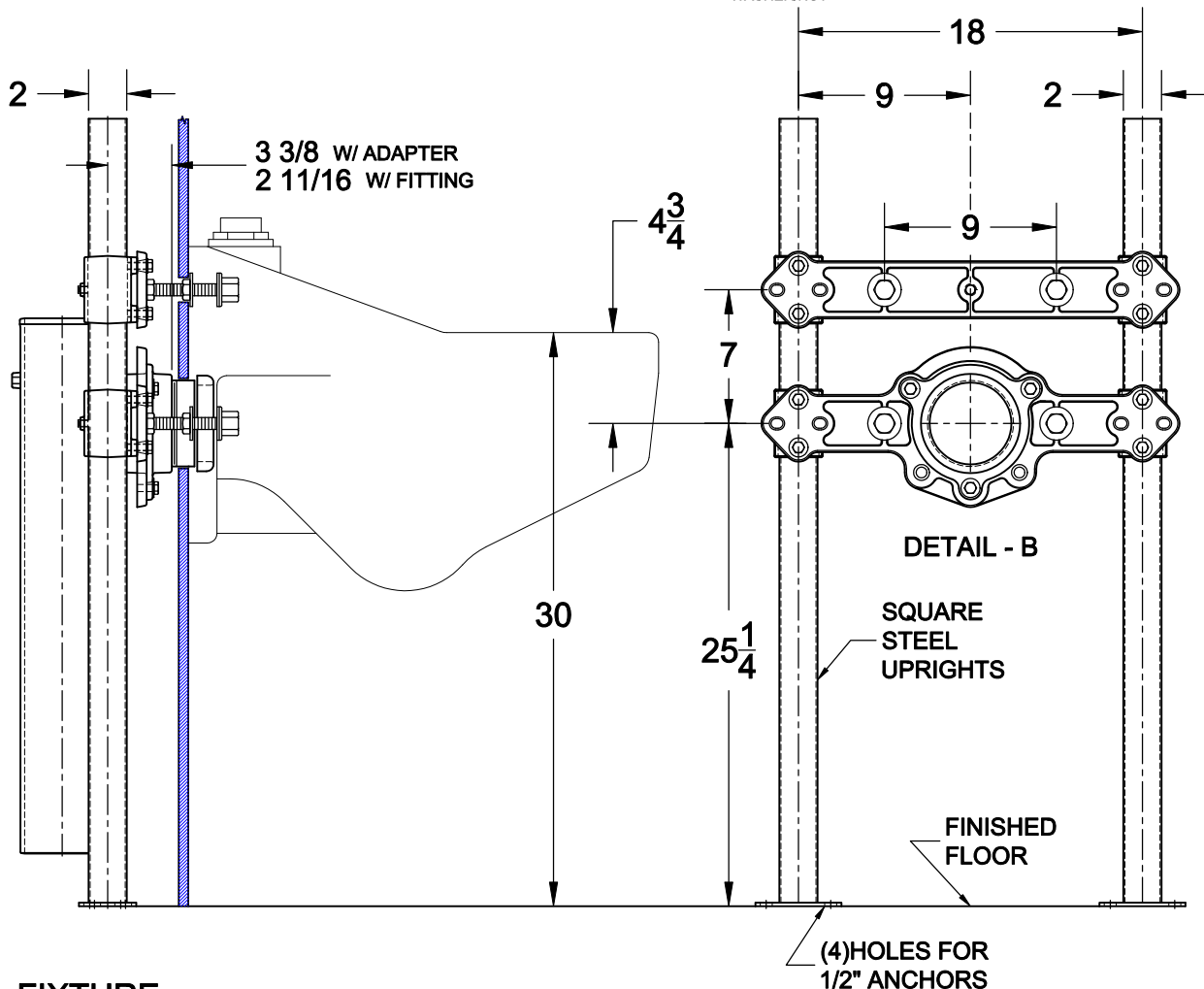
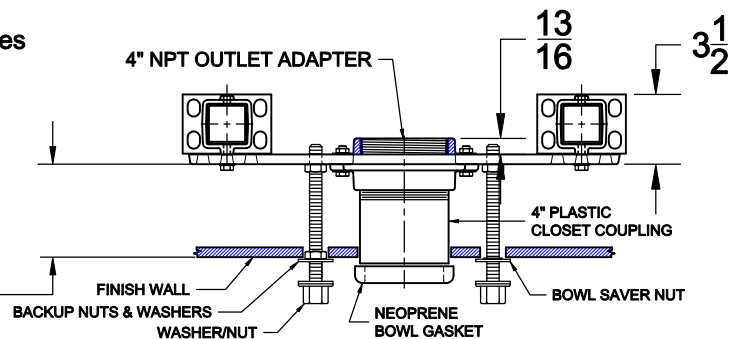
640

SHEET 1 OF 3

CLINICAL SERVICE SINK CARRIER WITH STEEL UPRIGHTS,
CLOSET COUPLING, SUPPORT HARDWARE,
NEOPRENE BOWL GASKET & FINISH TRIM.

Note: Contractor must verify dimensions with fixture
manufacturer's rough-in data. Tyler Pipe / Wade
Division accepts no responsibility for any inaccuracies
in drawing.

Style	Min.	Max.
Carrier w/ Adapter	2 1/4	11 1/4
Carrier w/ Fitting	1 1/2	9 1/2



FIXTURE

Manufacturer KOHLER

Name CAMERTON No. K-12867

Style CLINIC SINK

Cat. No. Type Wt. Lbs.

640 SINGLE 45.0

SEE SHEETS 2 & 3 FOR OPTIONAL FITTINGS

AutoCad.dwg