

Approval Date

Customer Approval

Job Location

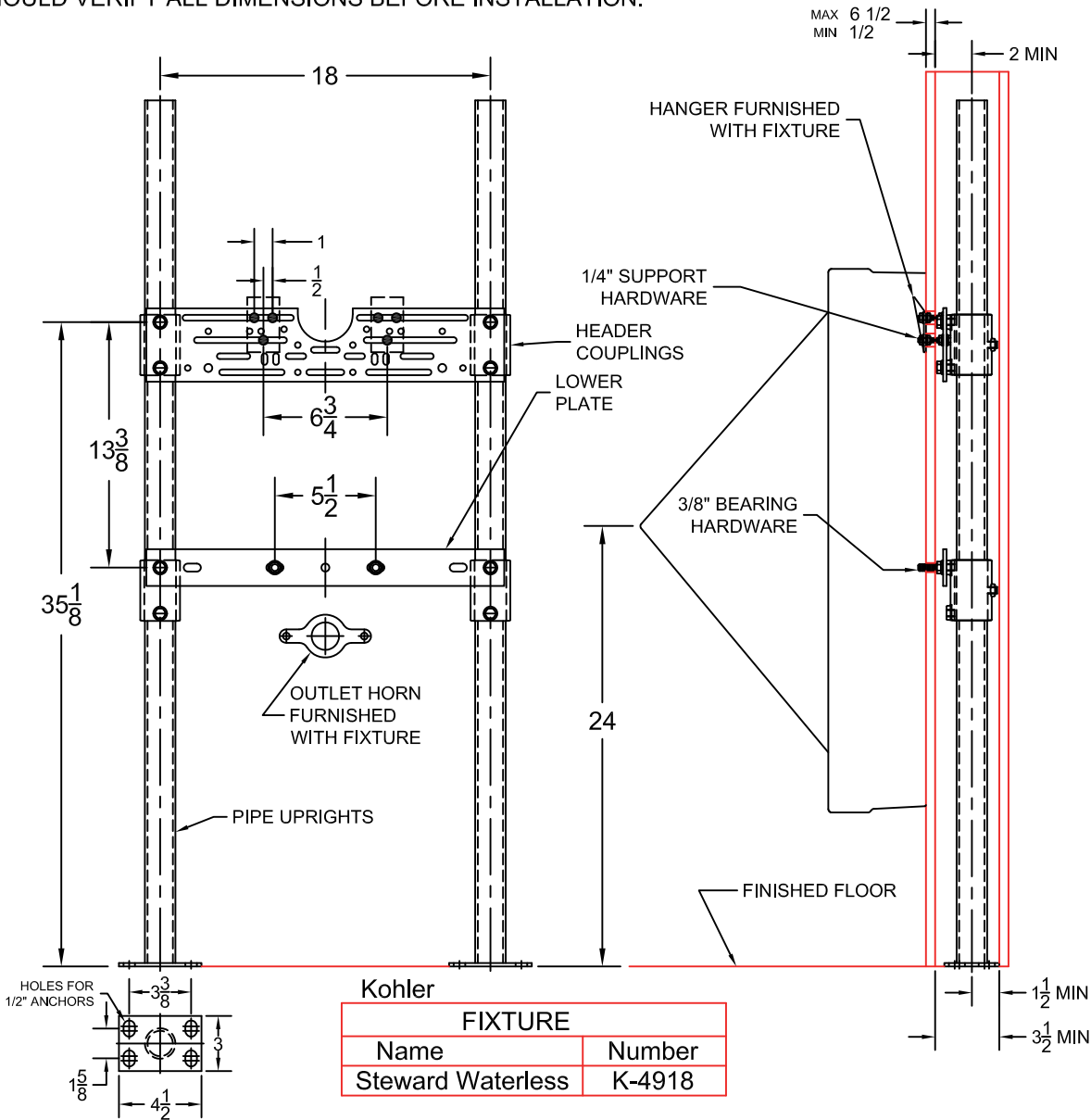
Job Name

Wade Division / Tyler Pipe Assumes No Responsibility For Superseded or Voided Data  
 Dimensional Data (Inches/mm) are Subject to Manufacturers Tolerance and Change Without Notice.

## 402 URINAL CARRIER

UNIVERSAL HANGER PLATE CARRIER WITH SCH.40 PIPE UPRIGHTS, WELDED BASE FEET AND SUPPORT HARDWARE

INFORMATION FURNISHED IS BASED UPON FIXTURE MANUFACTURERS ROUGH-IN. WADE ASSUMES NO RESPONSIBILITY FOR ACCURACY OR CHANGES IN FIXTURE MANUFACTURERS TOLERANCES. INSTALLER SHOULD VERIFY ALL DIMENSIONS BEFORE INSTALLATION.



### OPTIONS

Suffix	Description
M36	RECTANGULAR STEEL UPRIGHTS