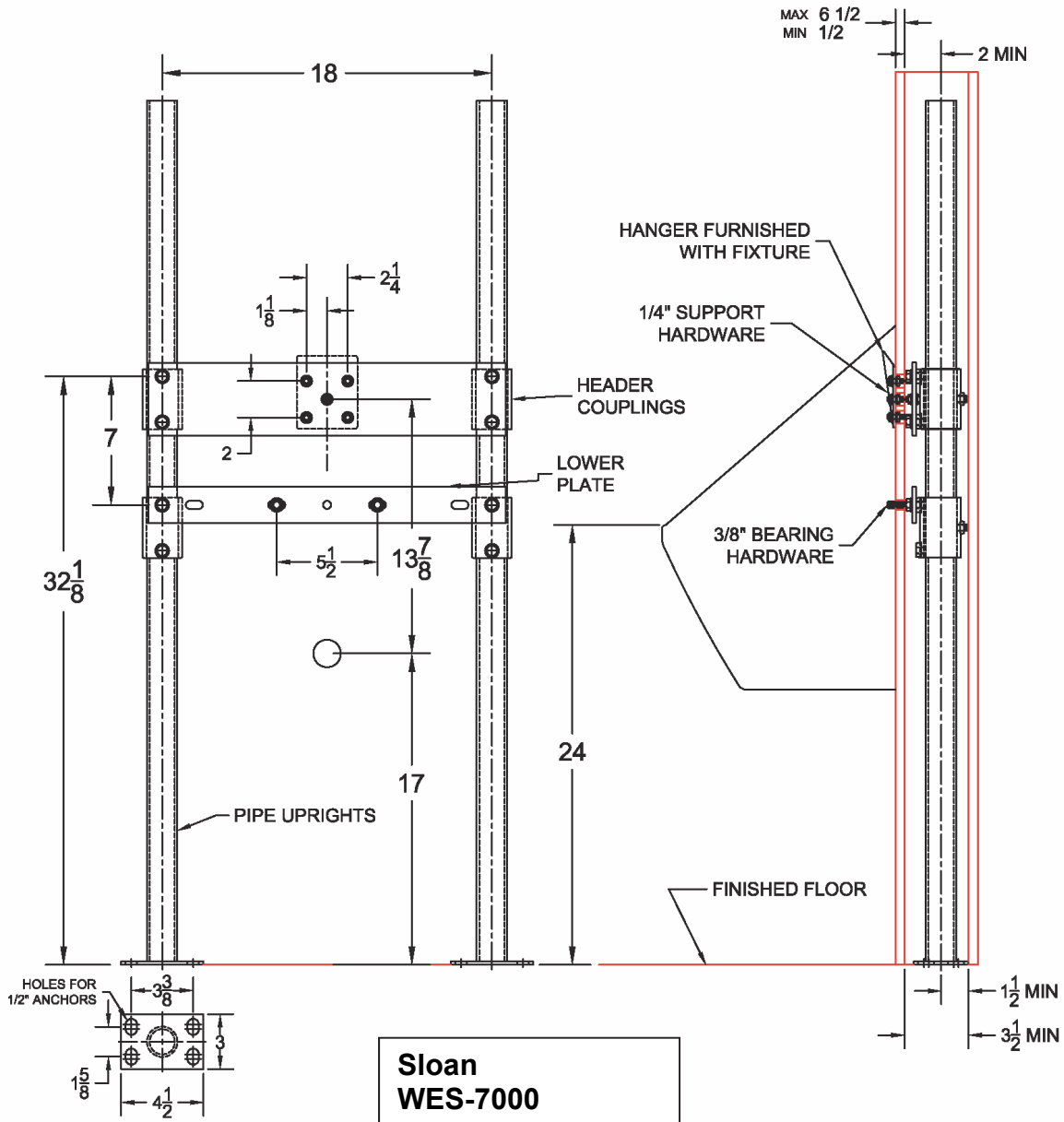


402 Urinal Carrier (Support Plate Style)

Regularly Furnished: Single water lavatory fixture support with painted cast iron header couplings, round tubular steel uprights, 7 gauge support plates, zinc plated support hardware and welded base feet.
 ASME Type II Urinal Carrier Load Rating = 200 Lb



**Sloan
WES-7000**

Model	Plate Package			Support Kit			Round Uprights		
	Qty	Part No.	UPC	Qty	Part No.	UPC	Qty	Part No.	UPC
402	1	WP460-U11	401460	2	WP400-2R	544180	2	PU-1F	227410
	1	WP417-U8	400417						
402-M36 486752	1	WP460-U11	401460	2	WP400-2S	544081	2	PU-22-47	406419
	1	WP417-U8	400417						