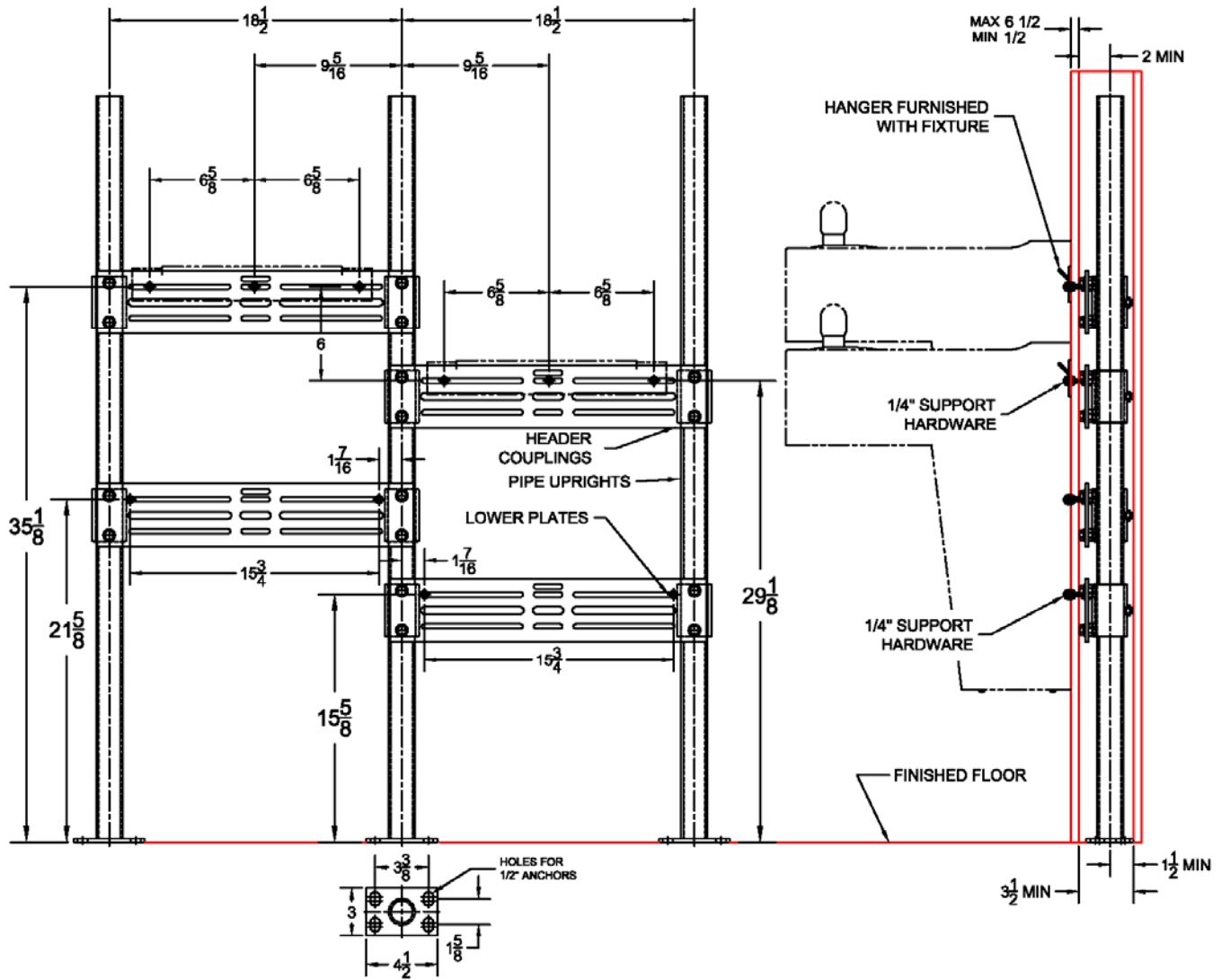


403-BL Water Cooler Carrier (Support Plate Style)

Regularly Furnished: Single water cooler fixture support with painted cast iron header couplings, tubular steel uprights, 7 gauge support plates, zinc plated support hardware and welded base feet.

ASME Type II Water Cooler Carrier Load Rating = 300 Lb.

Murdock MC72UBL & MC74UBL



| Model | UPC | Upright | Plate Package | | | Support Kit | | | Uprights | | |
|------------|--------|---------|---------------|------------|--------|-------------|----------|--------|----------|----------|--------|
| | | | Qty | Part No. | UPC | Qty | Part No. | UPC | Qty | Part No. | UPC |
| 403-BL | 411212 | Round | 4 | WP449-U11A | 401449 | 4 | WP400-2R | 544180 | 3 | PU-1F | 227434 |
| 403-BL-M36 | 411214 | Square | 4 | WP449-U11A | 401449 | 4 | WP400-2S | 544081 | 3 | PU-22-47 | 406419 |