

LAVATORY CARRIER



Approval
Date

Customer
Approval

Job
Location

Job
Name

Dimensional Data (Inches/mm) are Subject to Manufacturers Tolerance and Change Without Notice. Wade Division / Tyler Pipe Assumes No Responsibility For Superseded or Voided Data

520-08

CONCEALED ARM CARRIER WITH PIPE UPRIGHTS, WELDED BASE FEET, C.I. HEADER COUPLINGS, PIPE NIPPLES & HARDWARE.

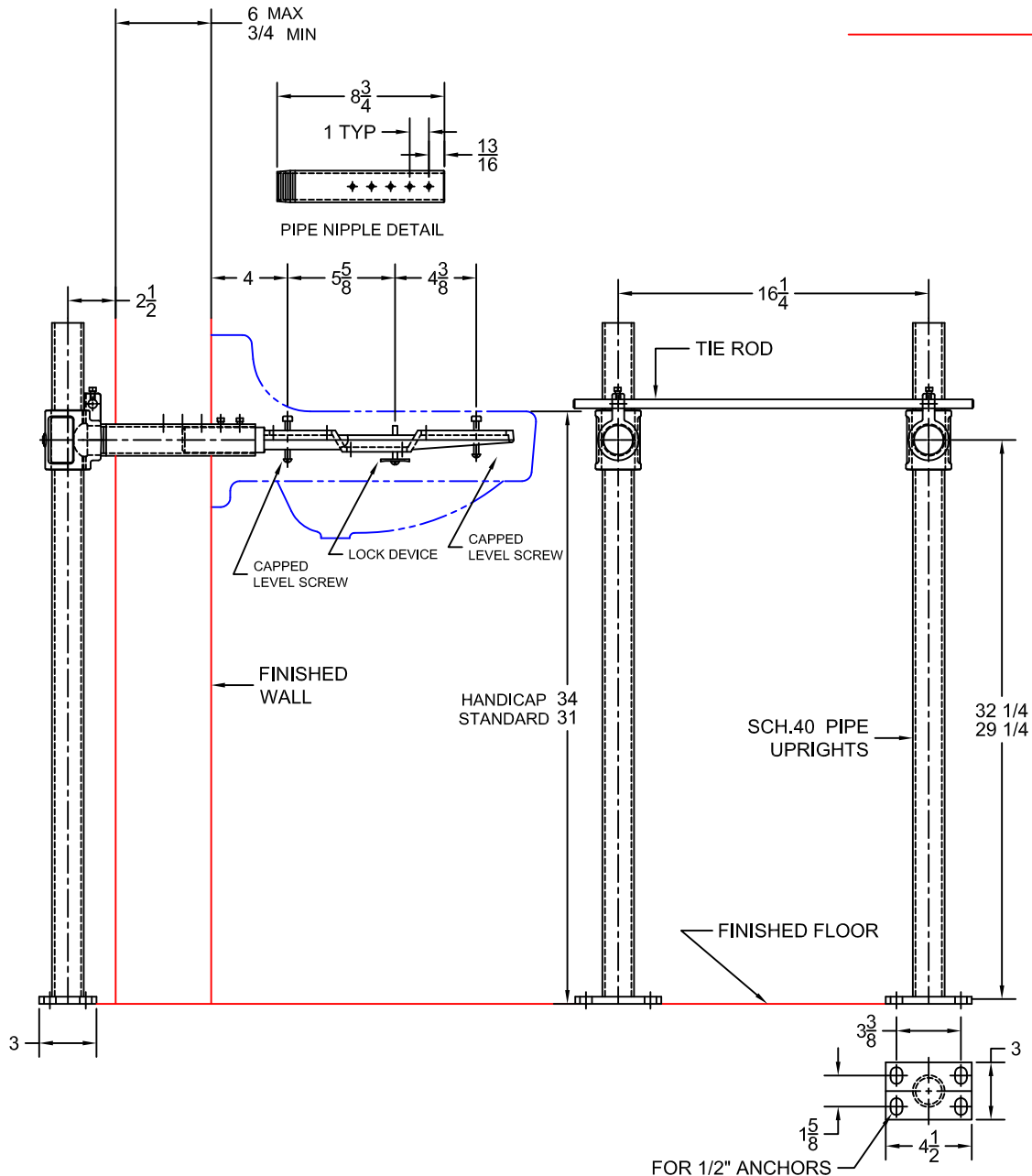
FIXTURE

Manufacturer American Standard

Name Missouri No. 0436.001

Style Wall Mount 0436.004

0436.008



OPTIONS

Cat. No.	Type	Wt. Lbs.	Suffix	Description
<input type="checkbox"/> 520-08	SGL	36.0	<input type="checkbox"/> M36	SQUARE UPRIGHTS

NOTE: CONTRACTOR MUST VERIFY DIMENSIONS WITH FIXTURE MANUFACTURER ROUGH-IN DATA
TYLER PIPE / WADE DIVISION ACCEPTS NO RESPONSIBILITY FOR ANY INACCURACIES IN DRAWING

AutoCad.dwg