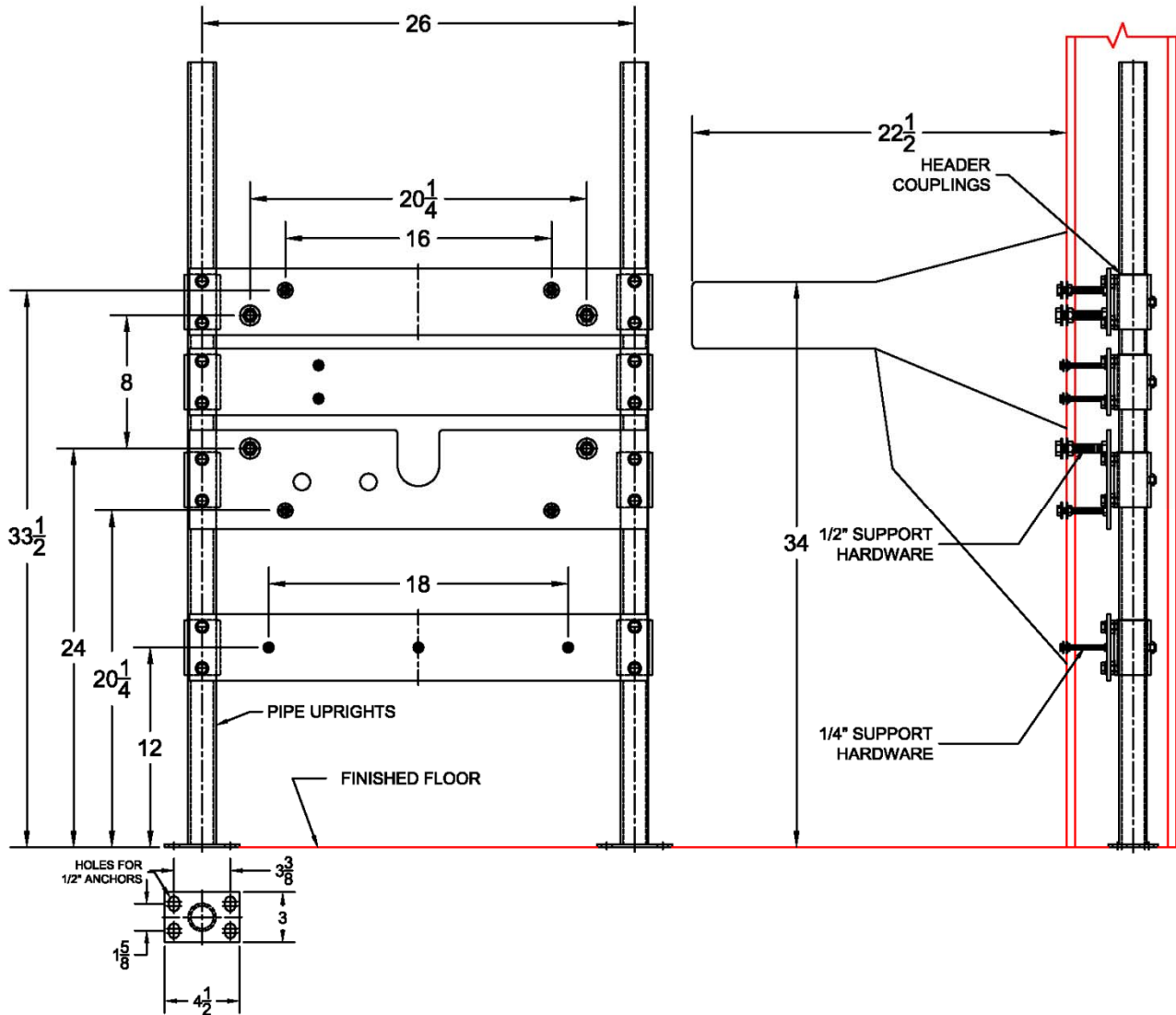


414 Lavatory Carrier (Support Plate Style)

Regularly Furnished: Single lavatory fixture support with painted cast iron header couplings, round tubular steel uprights, 7 gauge support plates, zinc plated support hardware and welded base feet.
 ASME Type II Sink Carrier Load Rating = 1,000 Lb

Whitehall Mfg.
WH3740BAR



| Model | Plate Package | | | Support Kit | | | Round Uprights | | |
|-------|---------------|------------|--------|-------------|----------|--------|----------------|----------|--------|
| | Qty | Part No. | UPC | Qty | Part No. | UPC | Qty | Part No. | UPC |
| 414 | 1 | WP454-U11A | 454002 | 4 | WP400-2R | 544180 | 2 | PU-1F | 227410 |
| | 1 | WP454-U11B | 454003 | | | | | | |
| | 1 | WP454-U11C | 454005 | | | | | | |
| | 1 | WP454-U11D | 454006 | | | | | | |