

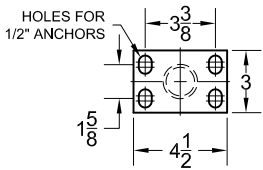
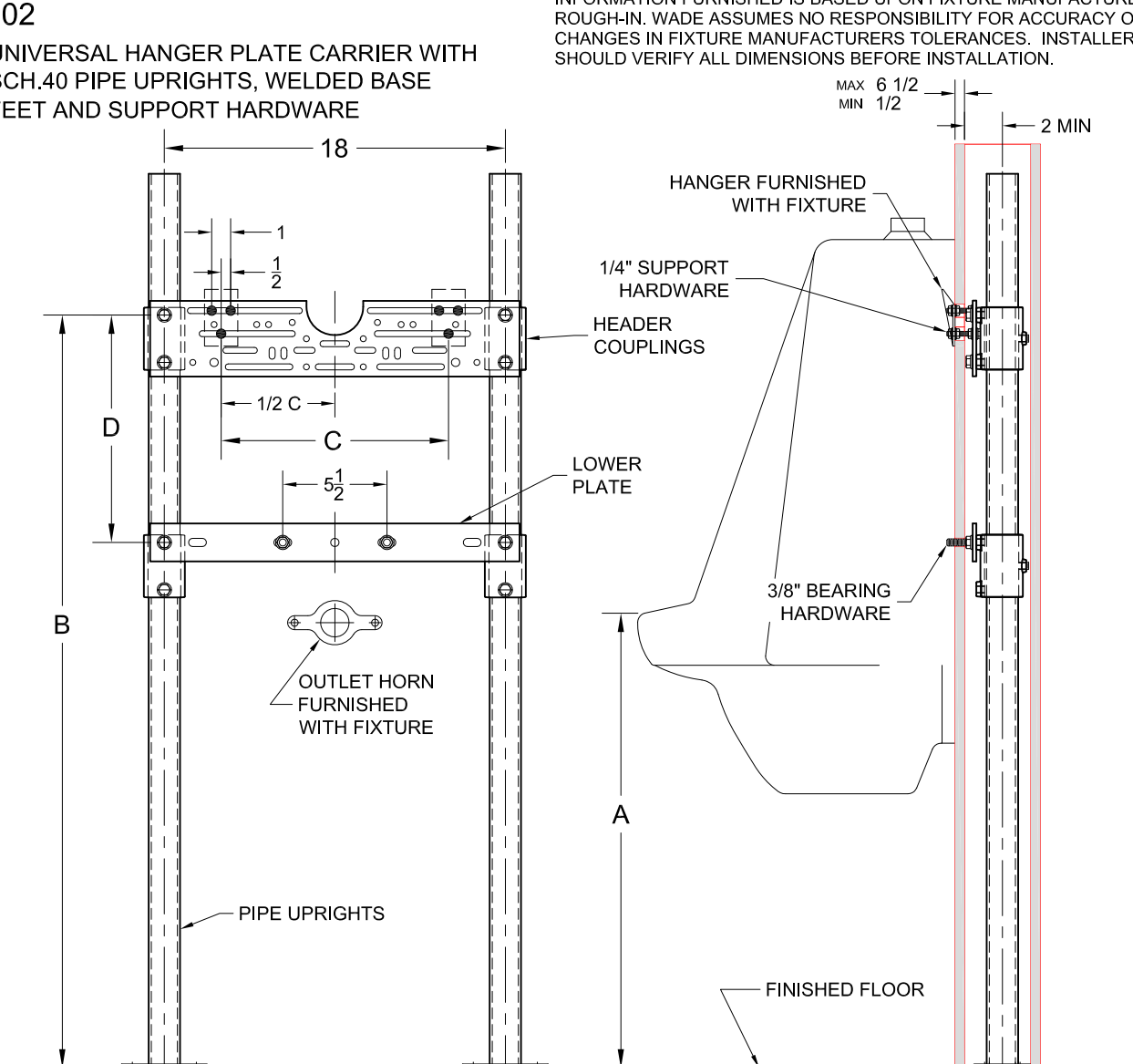
URINAL CARRIER



INFORMATION FURNISHED IS BASED UPON FIXTURE MANUFACTURERS ROUGH-IN. WADE ASSUMES NO RESPONSIBILITY FOR ACCURACY OR CHANGES IN FIXTURE MANUFACTURERS TOLERANCES. INSTALLER SHOULD VERIFY ALL DIMENSIONS BEFORE INSTALLATION.

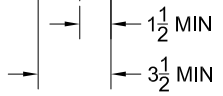
Approval Date: _____
 Customer Approval: _____
 Job Location: _____
 Job Name: _____

402
 UNIVERSAL HANGER PLATE CARRIER WITH SCH.40 PIPE UPRIGHTS, WELDED BASE FEET AND SUPPORT HARDWARE



Kohler

FIXTURE		A	B	C	D
Name	Number				
Bardon 1/8th	K-4904-ET	24	40 1/4	12	15
Bardon Touchless	K-4915	24	40 1/4	12	15
Bardon Superior	K-4960-ET	24	40 1/4	12	15
Bardon Superior	K-4960-ER	24	40 1/4	12	15
Bardon 1/8th GPF	K-4904-ET	24	40 1/4	12	15
Bardon	K-4991-ER	24	40 1/4	12	15
Bardon	K-4991-ET	24	40 1/4	12	15
Stanwell	K-4972-T	24	39 7/8	12	14
Stanwell	K-4972-R	24	39 1/8	12	14
Freshman	K-4989-T	24	35 1/4	10	14
Freshman	K-4989-R	24	35 1/4	10	14
Dexter	K-5016-ET	24	31 3/4	6 1/2	10
Dexter	K-5016-ER	24	31 3/4	6 1/2	10



OPTIONS

Suffix	Description
□ M36	RECTANGULAR STEEL UPRIGHTS