

LAVATORY CARRIER



Approval Date

Customer Approval

Job Location

Job Name

Dimensional Data (Inches/mm) are Subject to Manufacturers Tolerance and Change Without Notice. Wade Division / Tyler Pipe Assumes No Responsibility For Superseded or Voided Data

520-02

CONCEALED ARM CARRIER WITH PIPE UPRIGHTS, WELDED BASE FEET AND HARDWARE.

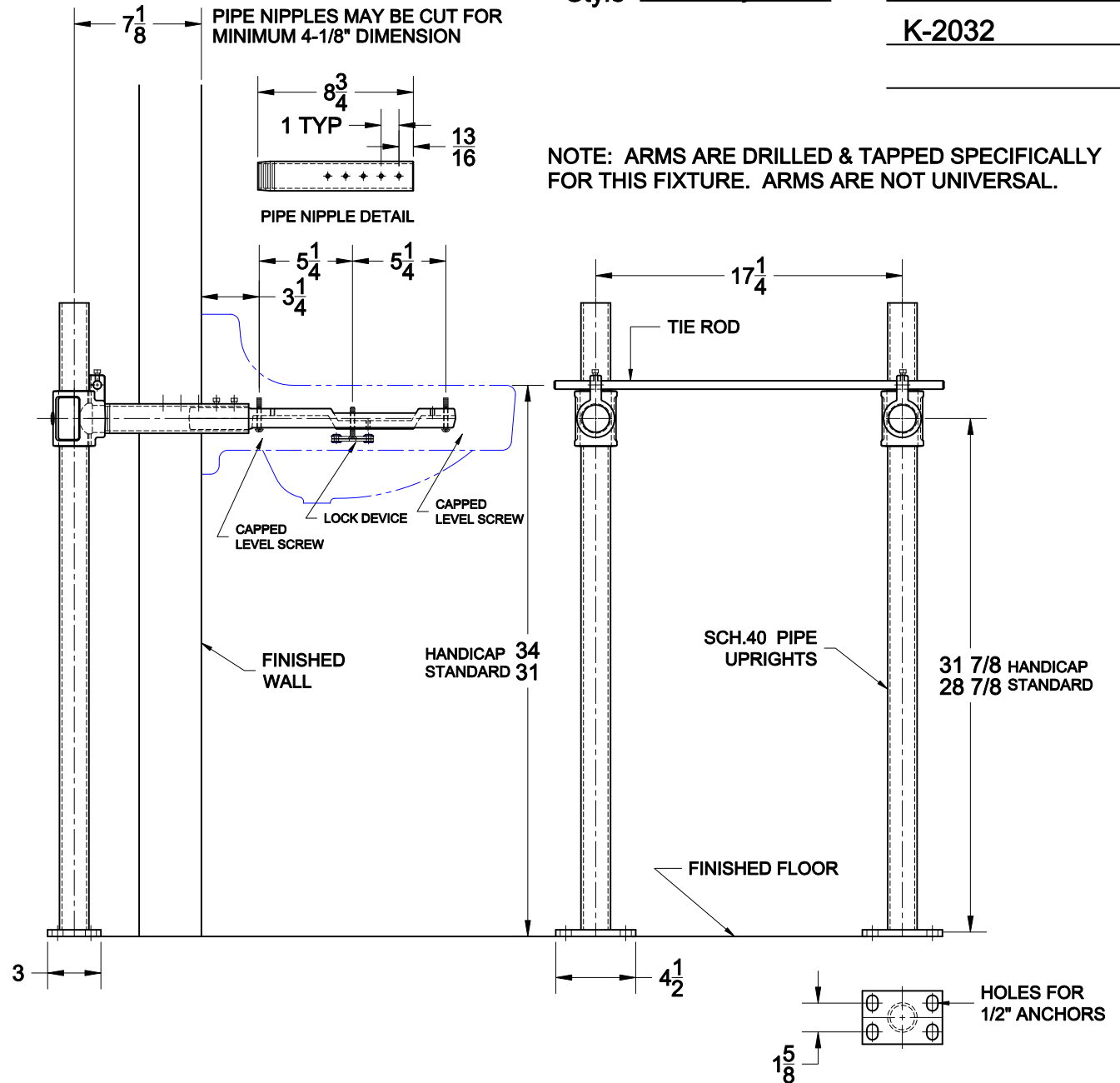
FIXTURE

Manufacturer Kohler

Name Greenwich No. K-2030

Style Lavatory K-2031

K-2032



NOTE: ARMS ARE DRILLED & TAPPED SPECIFICALLY FOR THIS FIXTURE. ARMS ARE NOT UNIVERSAL.

OPTIONS

Cat. No.	Type	Wt. Lbs.	Suffix	Description
520-02	SGL	36.0	M36	SQUARE UPRIGHTS

NOTE: CONTRACTOR MUST VERIFY DIMENSIONS WITH FIXTURE MANUFACTURER ROUGH-IN DATA TYLER PIPE / WADE DIVISION ACCEPTS NO RESPONSIBILITY FOR ANY INACCURACIES IN DRAWING

AutoCad.dwg