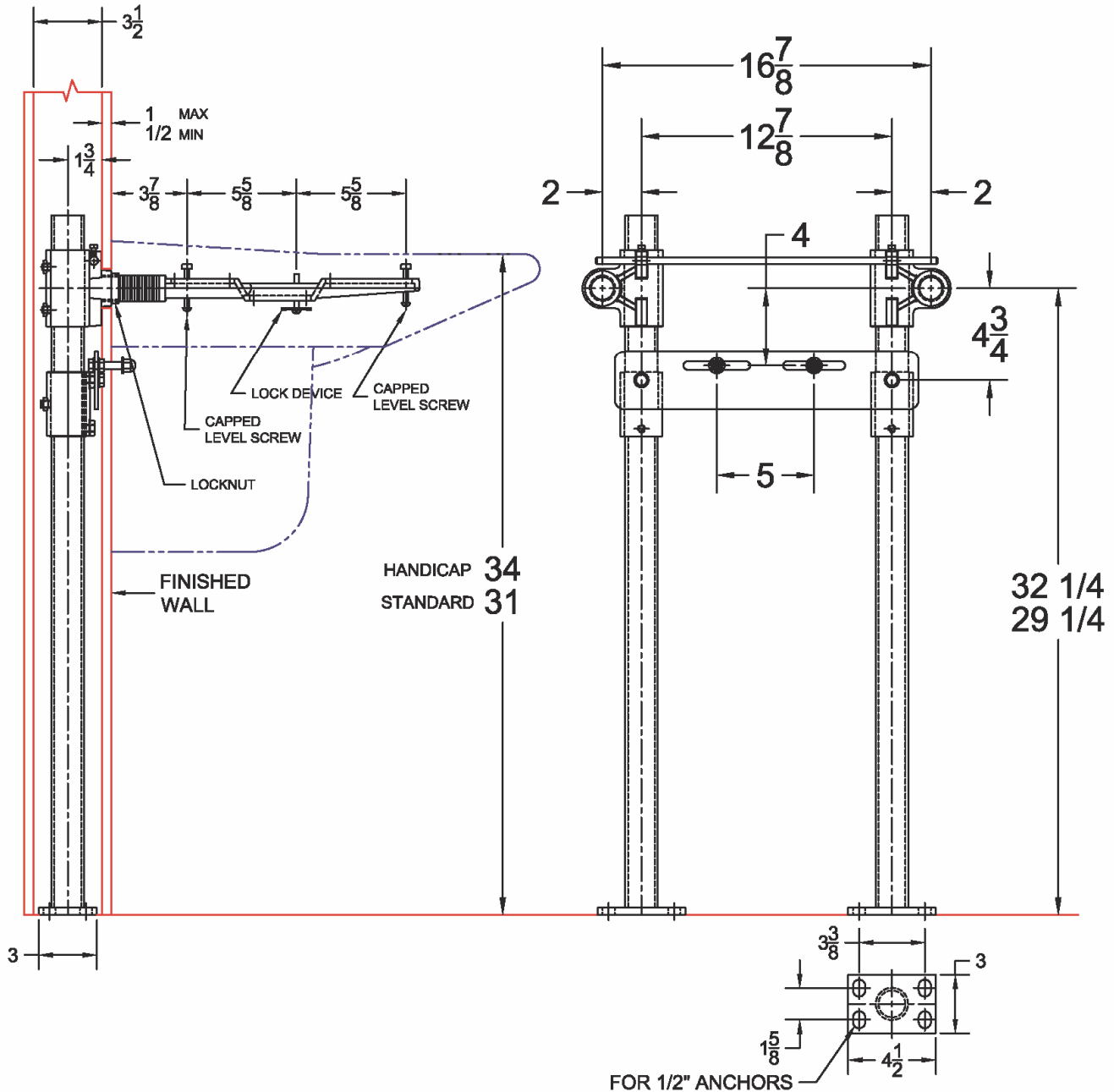


530-08-SC43 Lavatory Carrier (Concealed Arms)

Regularly Furnished: Single lavatory fixture support with painted cast iron header couplings, round tubular steel uprights, cast iron concealed arms, zinc plated support hardware, shroud support and welded base feet.
 ASME Type II Lavatory Carrier Load Rating = 250 Lb.



American Standard Murro w/ 0059.020 Knee Shroud		
0954.000	0958.000	0955.000

UPC	Model	Arm Package			Carrier Less Arms			Round Uprights			SC43 Kit		
		Qty	Part No.	UPC	Qty	Part No.	UPC	Qty	Part No.	UPC	Qty	Part No.	UPC
331508	530-08-SC43	1	WP530-08	455936	1	WP530	455929	2	PU-2F	227434	1	WP530-SC43	558749