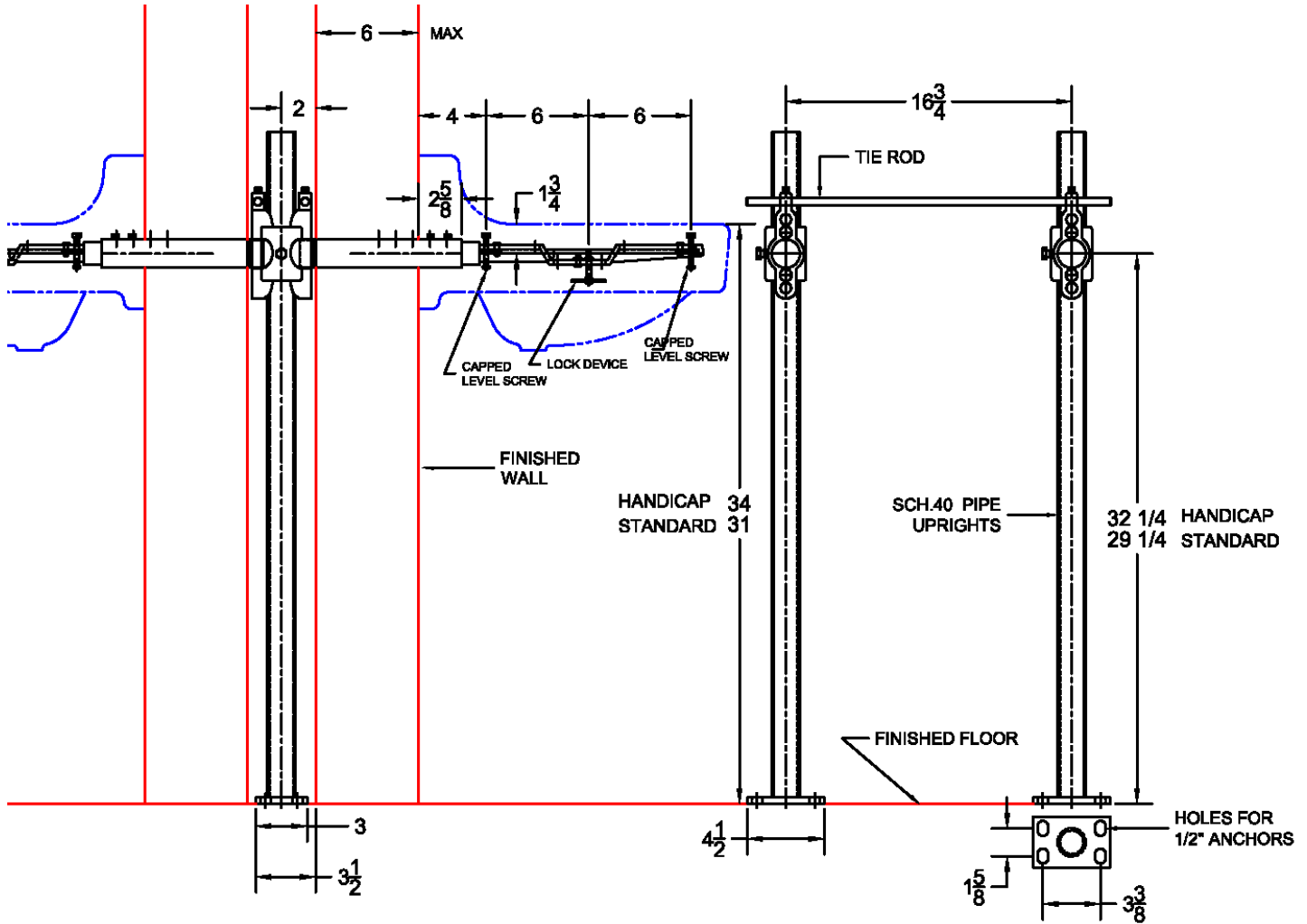


520D-08 Lavatory Carrier (Concealed Arms)

Regularly Furnished: Double lavatory fixture support with painted cast iron header couplings, round tubular steel uprights, cast iron concealed arms, zinc plated support hardware and welded base feet.
 ASME Type II Lavatory Carrier Load Rating = 250 Lb.



AMERICAN STANDARD LUCERNE

0355.012	0355.034	0355.056	0356.015	0356.037	0356.073	0356.115	0356.137	0356.421	0356.439
----------	----------	----------	----------	----------	----------	----------	----------	----------	----------

UPC	Model	Arm Package			Support Kit (8 3/4" Pipe Nipples)			Round Uprights		
		Qty	Part No.	UPC	Qty	Part No.	UPC	Qty	Part No.	UPC
331674	520-08	1	WP520-08	234319	1	WP520D-2R-PN875	544517	2	PU-2F	227434
331773	520-08-M36	1	WP520-08	234319	1	WP520D-2S-PN855	544524	2	PU-22-36	423829